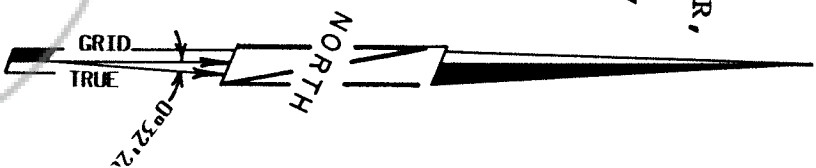


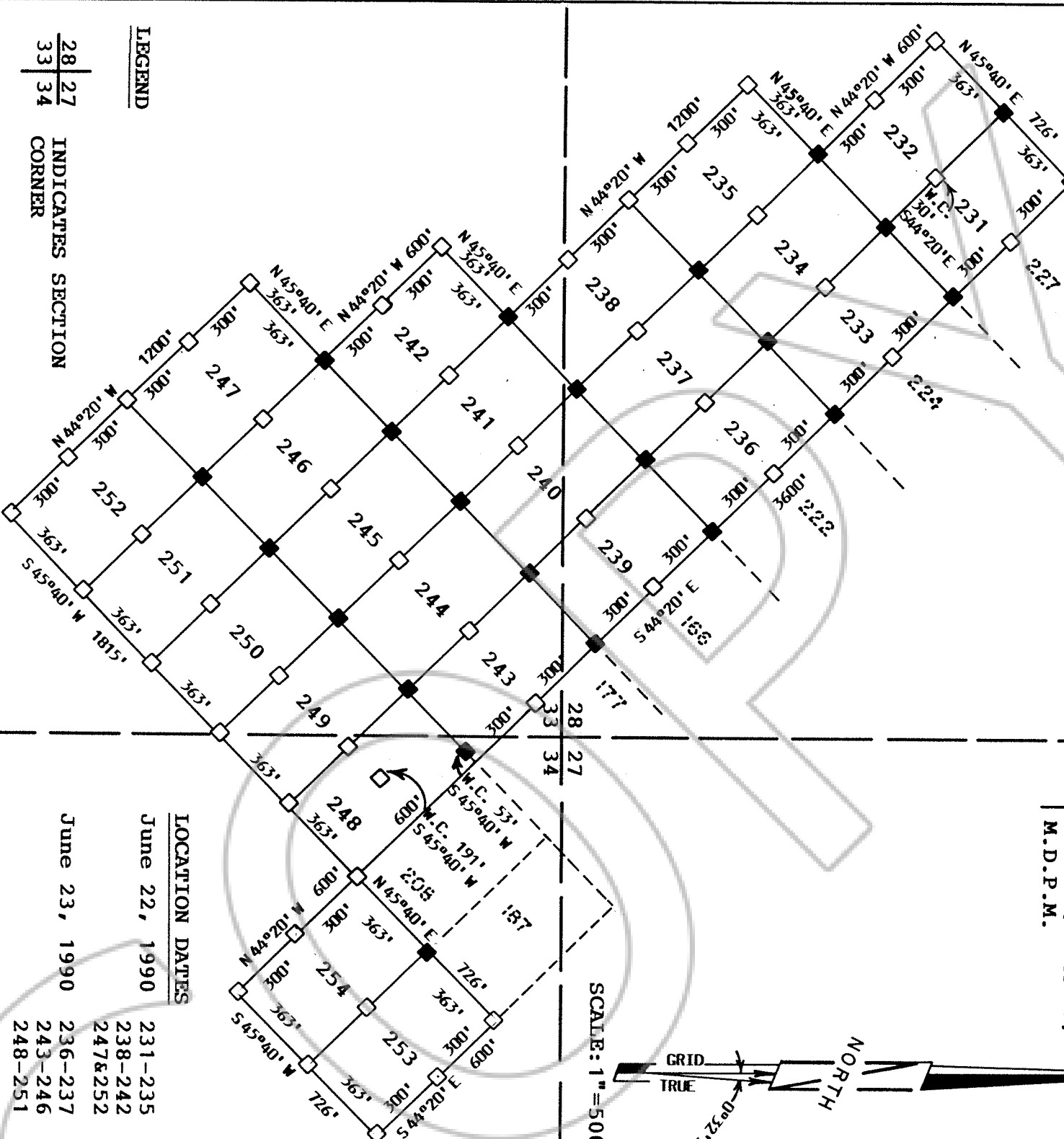
S 45° 40' W
7618'

TIE: NORTHEAST CORNER,
SECTION 27,
T.22N., R.49 E.,
M.D.P.M.

20. W
2653.1



SCALE: 1"=500



28	27
33	34

INDICATES SECTION CORNER

- ☐ — 3½" dia. X 4' WOOD POST MONUMENT
☒ — 3½" dia. X 4' WOOD POST LOCATION MONUMENT

NOTE: SECTION LINES ARE PROTECTED.

BEARINGS SHOWN ARE GRID AND
REFERENCED TO THE NEVADA STATE
PLANE DOORDINATE STSTEM EAST ZONE
(DISTANCES SHOWN ARE AT EARTH'S
SURFACE)

MAP OF THE
AM MILL SITE CLAIMS
EUREKA COUNTY, NEVADA

LOCATED BY TERRY ZENK

ATLAS GOLD MINING, INC.

SUITE 3150

370 17th STREET

DENVER, COLORADO 80202

JULY 3, 1990

APEX SURVEYING, INC. RIVERTON, WYOMING

FILED AT THE REQUEST OF Attor. E. A. Murrell
 on July 7 19 20, at 59 mins. past 10 A.M.
 RECORDS OF JEFFERSON COUNTY, NEVADA M. N. REBALEATI, Recorder
 File No. _____ Fee \$ 3.60

132769