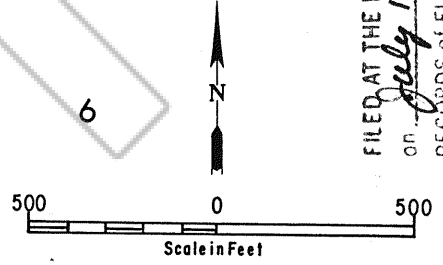


FILED AT THE REQUEST OF *Joseph Owens*
 on *July 16* 19 *90* at *18* mins. past *4 P.M.*
 RECORDS OF EUREKA COUNTY, NEVADA M. N. REBALEATI, RECORDER
 File No. *132795* Fee \$ *30*



REVISION RECORD

| | | |
|--|--|--|
| | | |
| | | |
| | | |

Approved By _____

Claims located June 20, 1990

MERLIN MINING CO.
 46 West 300 South, Suite 200-Salt Lake City, Utah, 84101
 American Towers Commercial Plaza

Lode Claim Group MM-192 / MM-193
 SPRING VALLEY AREA
 Diamond Mining District—Eureka County—Nevada

| | | |
|-------------------------|--------------|---------------|
| Scale 1" = 500' | Date 7/11/90 | D-SV-7 |
| Mapping J.E. & J. Owens | | |
| Drafting J.O. | | |

Revised