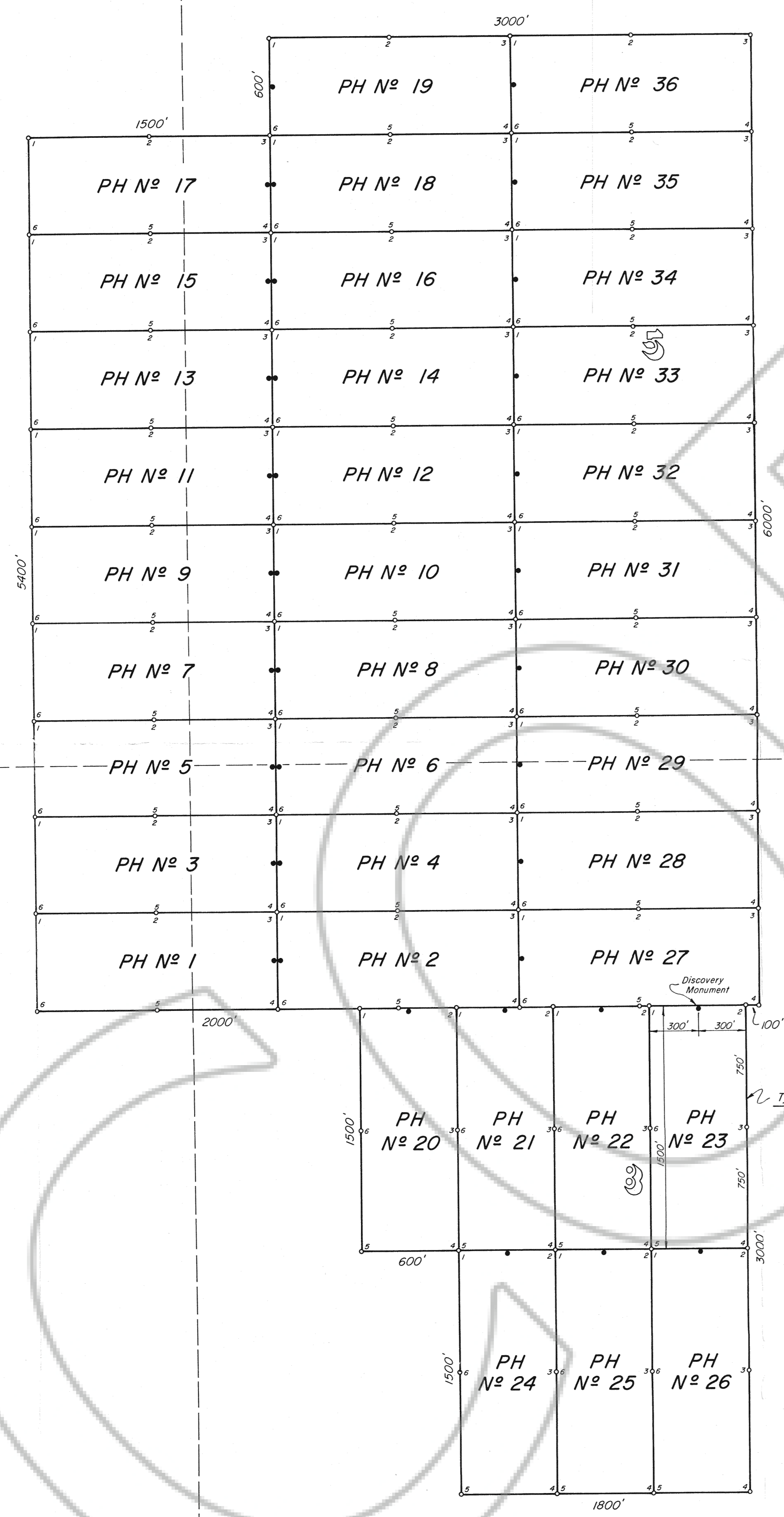


Found Section Corner

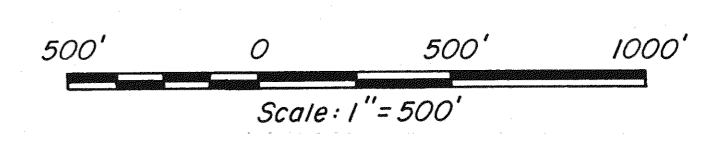


EXPLANATION

1. All claims are 600' x 1500', with the Discovery Monuments being 20' from end lines.
2. The corners, side centers and d.m.'s are 3" dia. x 4 1/2' long PVC pipe.
3. ○ - Corner and Side Center posts  
● - Discovery Monuments
4. The location dates for this group are:  
PH N° 1-21, 24-26, 33-36 on May 2, 1990  
PH N° 22, 23, 27-32 on May 3, 1990  
All monumentation was completed on June 28, 1990.
5. There are a total of 36 claims.

FILED AT THE REQUEST OF Independence Mining Co.  
 on July 25 1990, at 4:22 p.m., a.s.t. L.A.M.  
 RECORDS AT EUREKA COUNTY, NEVADA M.N. REBALEATI, Recorder  
 File No. 121932 Fee \$ 5.40

MAP SHOWING  
 'PH' CLAIM GROUP  
 N° 1-36  
 UNSURVEYED SECTIONS  
 5, 6, 7, 8  
 T. 23 N., R. 50 E.  
 EUREKA CO., NEVADA



Independence Mining Company Inc.  
 6110 Plumas Street Mail:  
 Reno, Nevada 89509 P. O. Box 41330  
 702/826-3000 Reno, Nevada 89504