


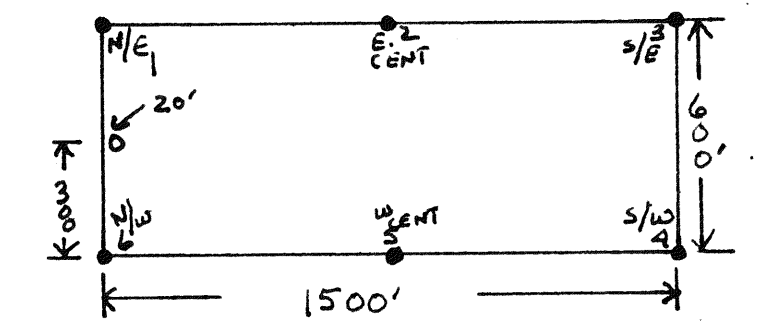


ELKO COUNTY  
EUREKA COUNTY

THE MAP OF THE  
RAIL 1-63  
LODE CLAIM GROUP  
SECTIONS: 13, 14, 23, 24, 25, 26  
T. 26 N / R. 54 E  
EUREKA & ELKO COUNTIES  
NEVADA  
LOCATED: JUNE 25, 1990  
BY: WILD ROSE MGMT. INC.  
316 BRIDGER ST.  
SUITE 147  
LAS VEGAS, NV. 89801  
SCALE: ONE INCH = 500 FEET

 SECTION CORNER  
 BOUNDARY MONUMENT  
 LOCATION MONUMENT

TYPICAL CLAIM



FILED AT THE REQUEST OF *Wild Rose Mgmt*  
on *Aug 10 19 90*, at *39* mins, past *10* AM  
RECORDS OF EUREKA COUNTY, NEVADA M. N. REBALEATI, Recorder  
File No. *133144* Fee \$ *825*

SW COR 59 IS  
968' AT S-3°40'20"E  
FROM SECTION COR.