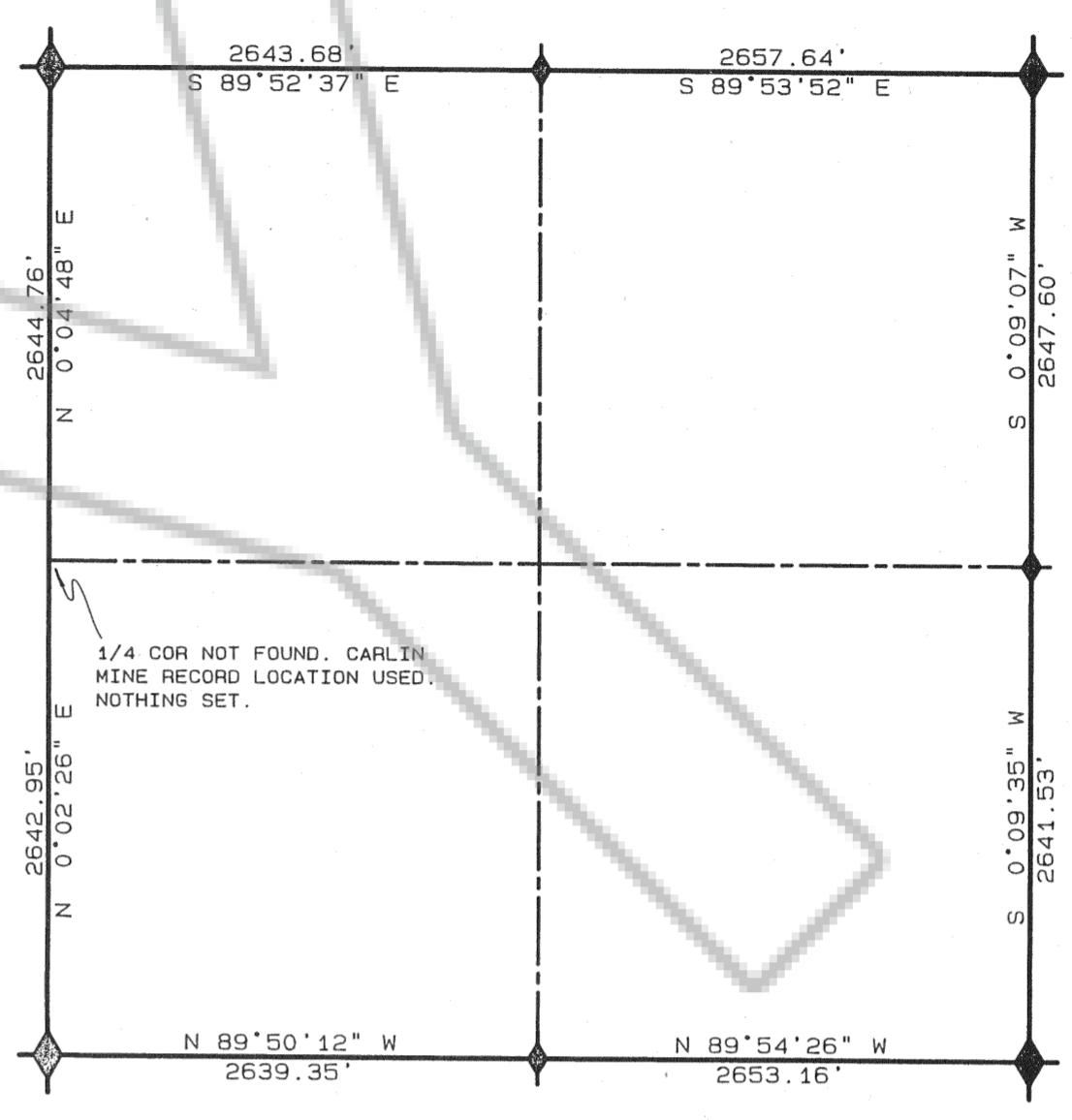


SECTION LINE DIMENSIONS FOR SEC. 24
(SCALE: 1" = 1000')



LINE	BEARING	DISTANCE
L1	N 89° 49' 43" W	446.29
L2	N 89° 49' 43" W	144.85
L3	N 89° 49' 43" W	147.02
L4	N 89° 49' 43" W	296.24
L5	N 89° 49' 43" W	296.24
L6	N 89° 49' 43" W	130.04
L7	N 0° 26' 45" E	86.71
L8	N 0° 03' 21" E	135.91
L9	N 0° 26' 45" E	90.05
L10	N 89° 49' 43" E	295.93

LEGEND:

- LOCATION MONUMENT, A 4" X 4" WOOD POST AND 35mm FILM CANISTER WIRED TO THE POST CONTAINING THE LOCATION NOTICE.
- CLAIM CORNER OR SIDE CENTER MONUMENT, A 4" X 4" WOOD POST WITH MARKED ALUMINUM TAG.
- ◆ FOUND G.L.O. BRASS CAP SECTION OR 1/4 SECTION CORNER.

LOCATOR: NEWMONT GOLD COMPANY
P.O. BOX 669
CARLIN, NV. 89822

LOCATION DATE: 15 AUGUST, 1990
MONUMENTATION WAS COMPLETED BY: 16 AUGUST, 1990

BASIS OF BEARINGS IS THE CARLIN GOLD MINE COORDINATE SYSTEM

SCALE: 1" = 300'

FILE NO. 134231
FILED AT THE REQUEST OF *Newmont Gold Co*
DATE 10/24 1990
TIME 9:54 A. M.
M.J. Roberts
EUREKA COUNTY RECORDER

MAP
PETE NO. 1A THRU NO. 37A
LODE MINING CLAIMS OVERLAYING
SECTION 24, T.35N., R.50E., M.D.M.
FOR
NEWMONT GOLD COMPANY

CHILTON Engineering & Surveying Ltd.
421 Court Street Elko, Nevada 89801

90071 1/1