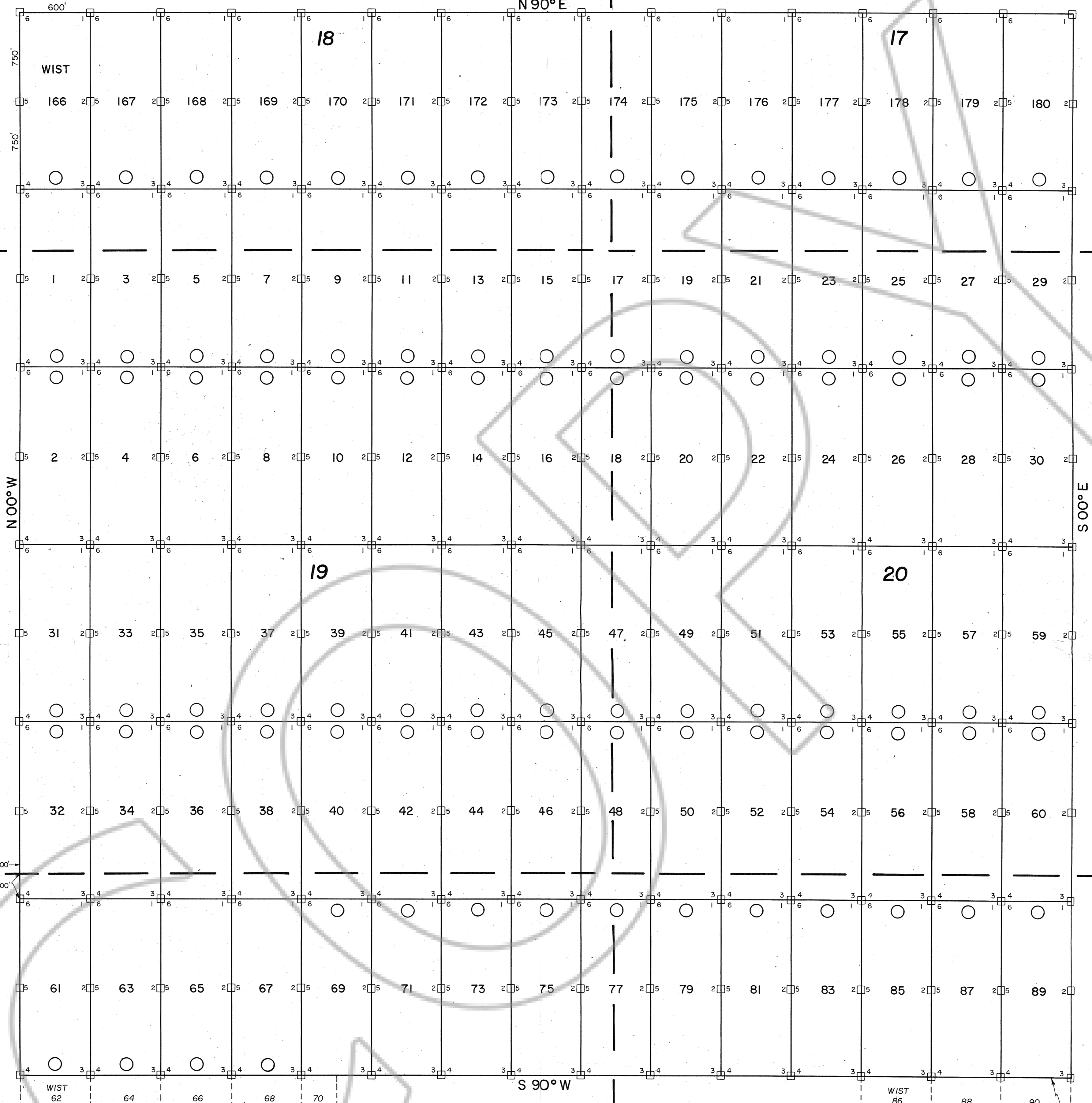


R. 51 E. R. 52 E.

N 90° E



T. 21 N.

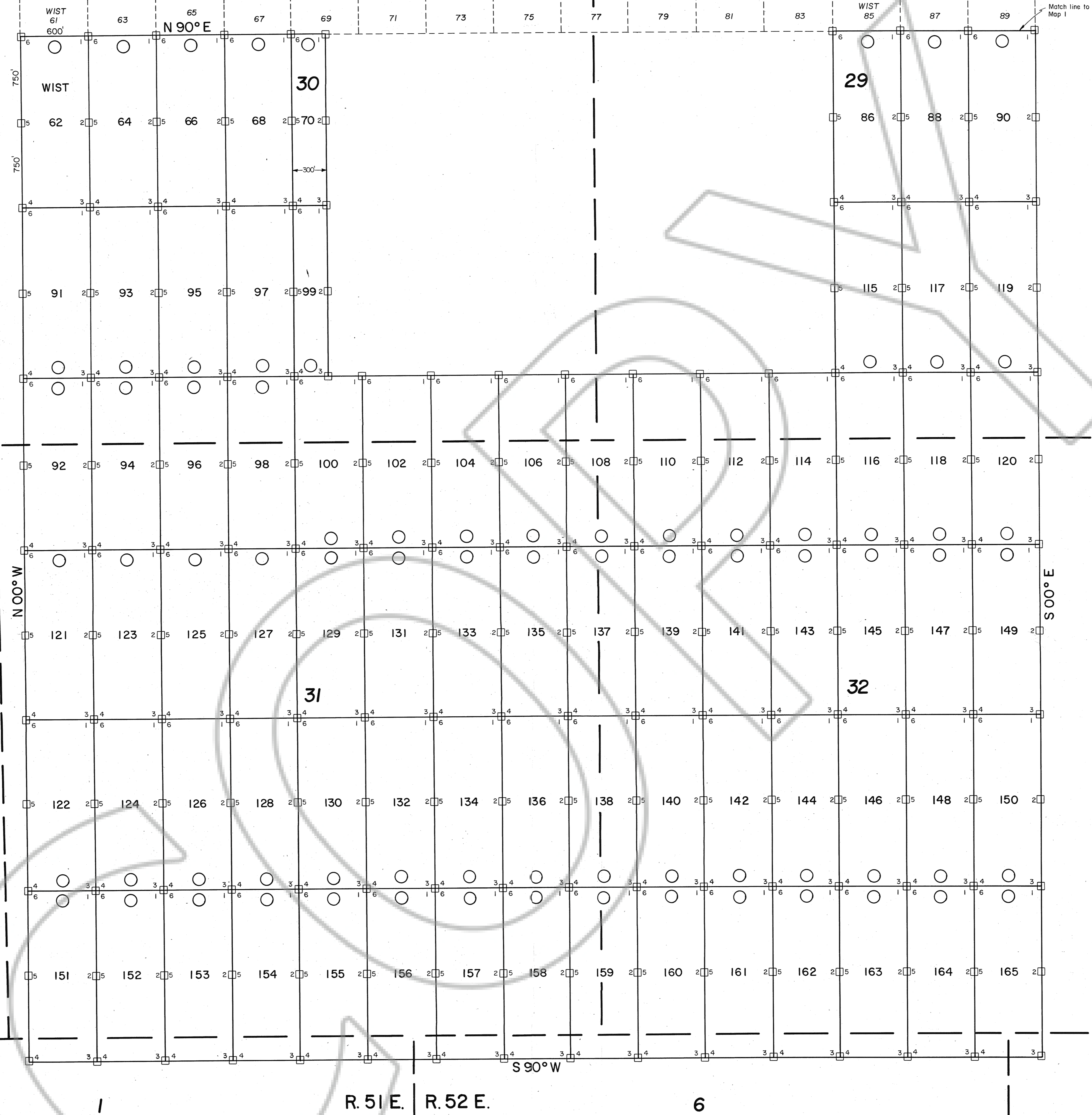
○ LOCATION MONUMENT  
 ALL CLAIMS ARE 600' x 1500' UNLESS OTHERWISE NOTED.  
 ALL LOCATION MONUMENTS ARE OFFSET 10' FROM END CENTERS UNLESS OTHERWISE NOTED.  
 ALL LOCATION MONUMENTS, SIDE CENTERS AND CORNERS ARE MONUMENTED WITH 3" DIA. BY 5' IN LENGTH PVC PIPE.  
 ALL BEARINGS SHOWN HEREON ARE TRUE BEARINGS.

**MAP**  
 OF  
 LODE MINING CLAIMS  
 WITHIN  
 TOWNSHIPS 20 & 21 NORTH, RANGES 51 & 52 EAST  
 MOUNT DIABLO MERIDIAN  
 EUREKA COUNTY, NEVADA  
 FOR  
**WESTERN MINING CORPORATION (USA)**  
 240 SOUTH ROCK BLVD., SUITE 137  
 RENO, NEVADA 89502

FILED AT THE REQUEST OF *Western Mining Corp.*  
 on *Dec. 27* 19 *90*, at *33* mms, past *Cap. M.*  
 RECORDS OF EUREKA COUNTY, NEVADA M. N. REBALEATI, Recorder  
 File No. **135648** Fee \$ **1350**

WIST CLAIMS 1-71, 73, 75, 77, 79, 81, 83, 85-100,  
 102, 104, 106, 108, 110, 112, 114-180  
 LOCATED - OCTOBER 1-9, 1990

R. 51 E. | R. 52 E.



○ = LOCATION MONUMENT  
 ALL CLAIMS ARE 600' x 1500' UNLESS OTHERWISE NOTED.  
 ALL LOCATION MONUMENTS ARE OFFSET 10' FROM END CENTERS UNLESS OTHERWISE NOTED.  
 ALL LOCATION MONUMENTS, SIDE CENTERS AND CORNERS ARE MONUMENTED WITH 3" DIA. BY 5' IN LENGTH PVC PIPE.  
 ALL BEARINGS SHOWN HEREON ARE TRUE BEARINGS.

**MAP**  
 OF  
 LODE MINING CLAIMS  
 WITHIN  
 TOWNSHIPS 20 & 21 NORTH, RANGES 51 & 52 EAST  
 MOUNT DIABLO MERIDIAN  
 EUREKA COUNTY, NEVADA  
 FOR  
**WESTERN MINING CORPORATION (USA)**  
 240 SOUTH ROCK BLVD., SUITE 137  
 RENO, NEVADA 89502

FILED AT THE REQUEST OF *Western Mining Corp.*  
 on *Dec. 27* 19 *90*, at *3:32* mins, past *3:00* P.  
 RECORDS OF EUREKA COUNTY, NEVADA M. N. REBALEATI, Recorder  
 File No. **135648** Fee \$ *11.40*

LOCATED - OCTOBER 1-9, 1990

135648

Survey and Map by: ROCKY MOUNTAIN SURVEYORS Albuquerque, New Mexico Job No. 14-90