

NW1/4 Section 2

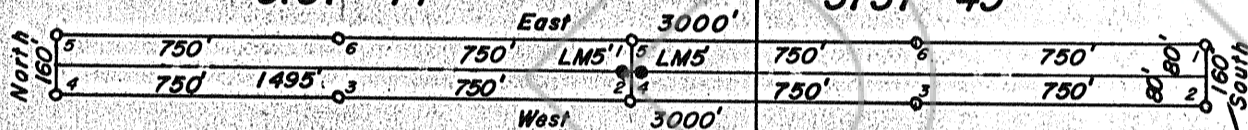
NE1/4 Section 2

T.22N., R.50E.
M.D.B. & M.

UN SURVEYED

SISI 44

SISI 45



SW1/4 Section 2

SE1/4 Section 2



7-6-90

Tie: S 6°27'14" E 13,056.97'
To Section Corner 14 13
Found 3" Aluminum 23 24
Cap Set By Apex Surveying
Marked For Section Corner

NOTES

o Indicates a claim boundary monument set this survey, 3" dia. solid PVC post marked for the appropriate corner number with a metal tag stapled to the post with PVC cap.

LM^o Indicates a claim location monument set this survey, 3" dia solid PVC post and a plastic bottle, with the notice of location inside, attached to the post with PVC cap.

All claim location monuments are set 5' from the endline unless otherwise noted.

◇ Indicates found Section corner as noted.

◆ Indicates found 1/4 Section corner as noted.

Basis Of Bearings: Solar observation.

LOCATOR:

Nerco Exploration Company
P. O. Box 8831
Vancouver, WA 98662

LOCATION DATES:

SISI 44 & 45 were located on
6-15-90.

FILED AT THE REQUEST OF Phelos Dodge
on Aug 9 1990, at 15 mins, past 8A M.
RECORDS OF EUREKA COUNTY, NEVADA M. N. REBALEATI, Recorder
File No. 133079A Fee \$ 30

MAP
SISI LODE CLAIMS
FOR

NERCO EXPLORATION COMPANY
WITHIN UNSURVEYED TOWNSHIP
T.22N., R.50E., M.D.B. & M.
EUREKA COUNTY, NEVADA

133079A