

T.22N., R.50E.
M.D.B. & M.

SW1/4 Section 11

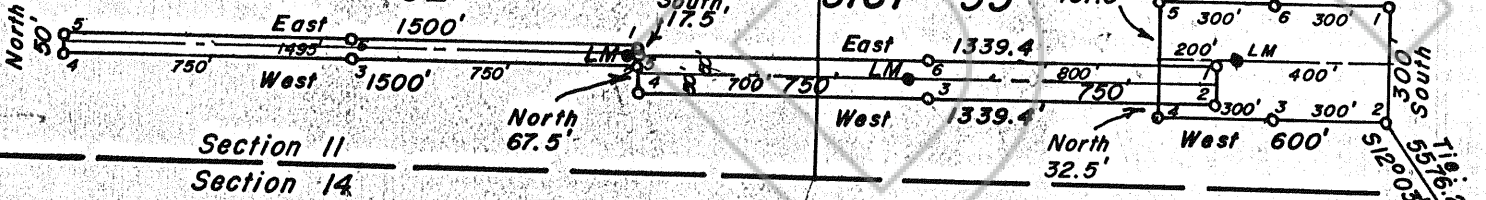
SE1/4 Section 11

UNSURVEYED

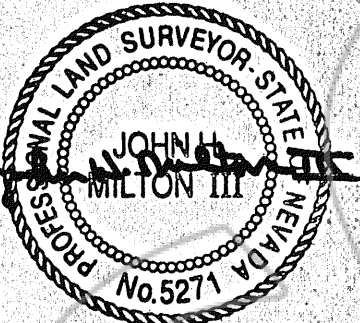
SISI 54

SISI 52

SISI 53



To Section Corner 14/13
Found 3" Aluminum 23/24
Cap Set By Apex Surveying
Marked For Section Corner



7-6-90

NOTES

- Indicates a claim boundary monument set this survey, 3" dia. solid PVC post marked for the appropriate corner number with a metal tag stapled to the post with PVC cap.
- LM ● Indicates a claim location monument set this survey, 3" dia solid PVC post and a plastic bottle, with the notice of location inside, attached to the post with PVC cap.

All claim location monuments are set 5' from the endline unless otherwise noted.

◇ Indicates found Section corner as noted.

◆ Indicates found 1/4 Section corner as noted.

Basis Of Bearings: Solar observation

LOCATOR:

Nerco Exploration Company
P. O. Box 8931
Vancouver, WA 98682

LOCATION DATES:

SISI 52 was located on 6-13-90.
SISI 53 & 54 were located on 6-12-90.

FILED AT THE REQUEST OF Phelps Dodge
on Aug 9 19 90, at _____ mins, past
RECORDS OF EUREKA COUNTY, NEVADA M. N. REBALEATI, Recorder
File No. 133088A Fee \$ 45

**MAP
SISI LODE CLAIMS
FOR**

**NERCO EXPLORATION COMPANY
WITHIN UNSURVEYED TOWNSHIP
T.22N., R.50E., M.D.B. & M.
EUREKA COUNTY, NEVADA**

133088A