

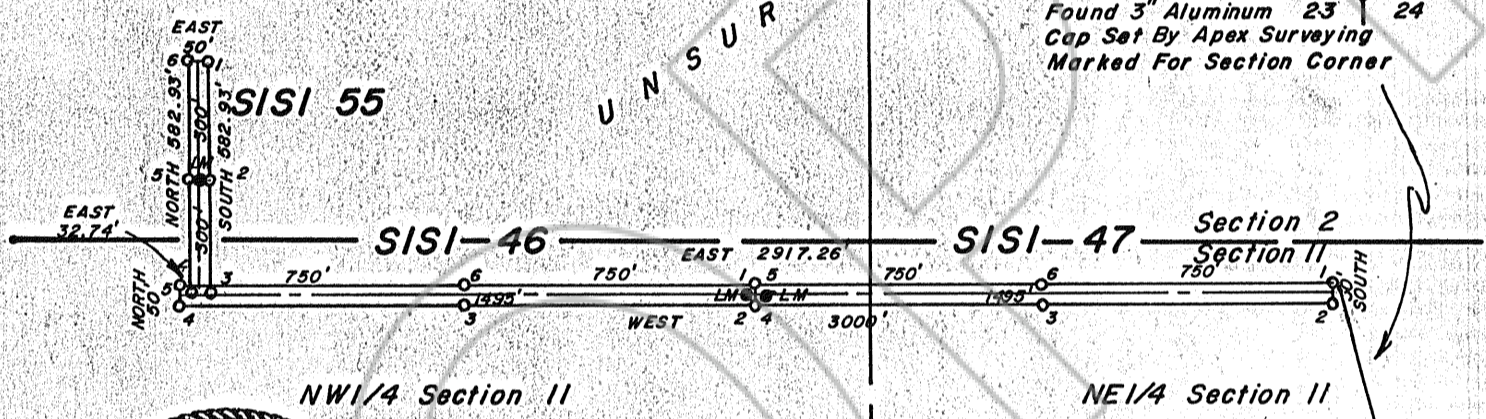
T.22N., R.50E.  
M.D.B. & M.

SW 1/4 Section 2

SE 1/4 Section 2

UNSURVEYED

Tie: S 7°52'03"E 10,549.26'  
To Section Corner 14 13  
Found 3" Aluminum 23 24  
Cap Set By Apex Surveying  
Marked For Section Corner



7-6-90

NOTES

- Indicates a claim boundary monument set this survey, 3" dia. solid PVC post marked for the appropriate corner number with a metal tag stapled to the post with PVC cap.
  - LM○ Indicates a claim location monument set this survey, 3" dia solid PVC post and a plastic bottle, with the notice of location inside, attached to the post with PVC cap.
- All claim location monuments are set 5' from the endline unless otherwise noted.
- ◇ Indicates found Section corner as noted.
  - ◆ Indicates found 1/4 Section corner as noted.

Basis Of Bearings : Solar observation.

LOCATOR:

Nerco Exploration Company  
P. O. Box 8831  
Vancouver, WA 98662

LOCATION DATES:

SISI 46, 47 & 55 were located on  
6-14-90.

FILED AT THE REQUEST OF Phelps Dodge  
on 8/9 19 90 at 15 mins. past 1:54 M.  
RECORDS OF EUREKA COUNTY, NEVADA. M. N. REBALEATI, Recorder  
File No. 133081B Fee \$ 45

MAP  
SISI LODE CLAIMS  
FOR

NERCO EXPLORATION COMPANY  
WITHIN UNSURVEYED TOWNSHIP  
T. 22N., R. 50E., M.D.B. & M.  
EUREKA COUNTY, NEVADA

133081B