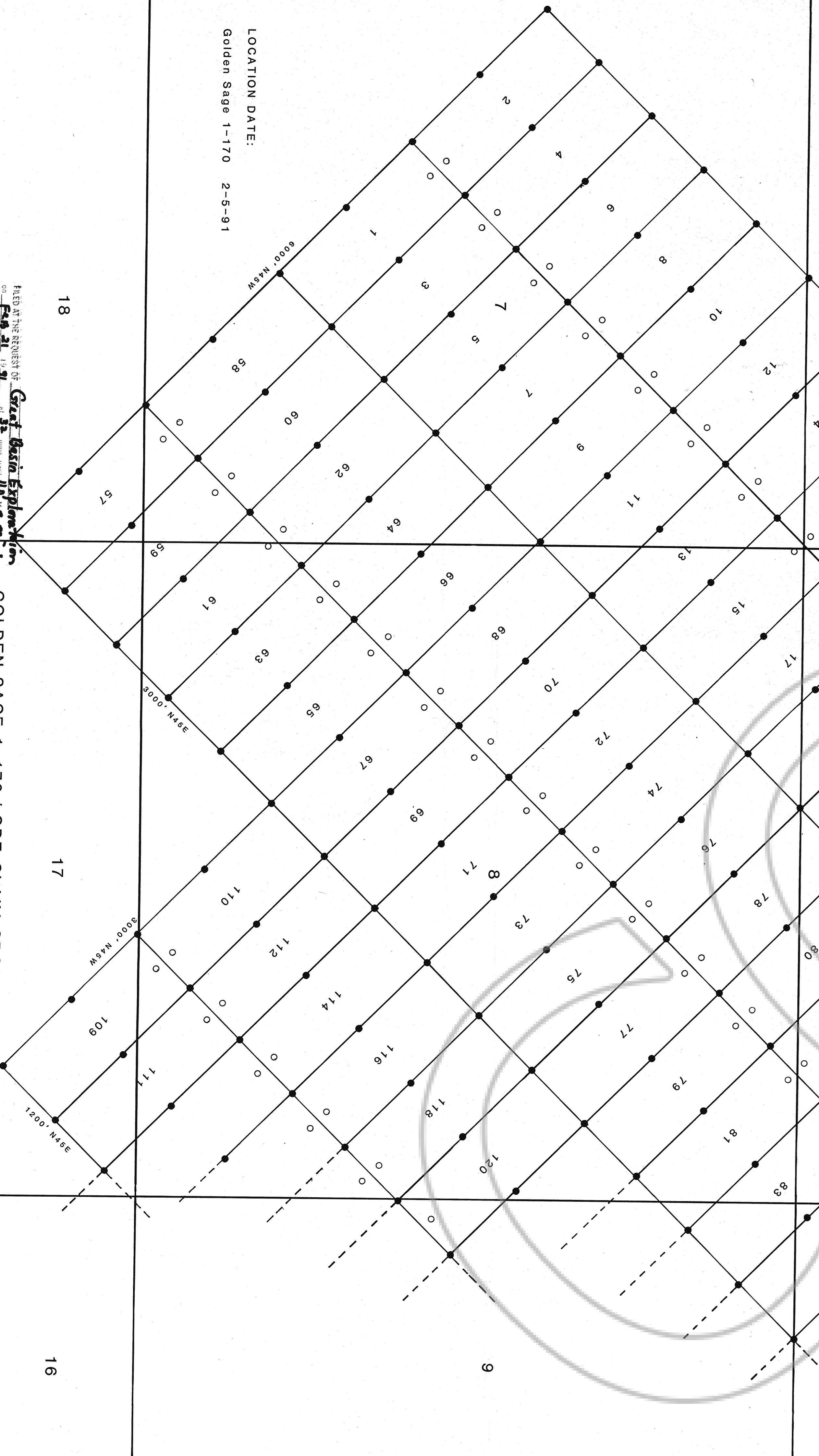


LOCATED AND OWNED BY
 Great Basin Exploration and Mining
 3400 Kauli Court Ste. # 208
 Reno, Nevada 89509

LOCATION DATE:
 Golden Sage 1-170 2-5-91



T25N
 T24N

Com. corner Golden Sage 39,450.41,42.18 on NE corner section 5 T24N R50E

R50E

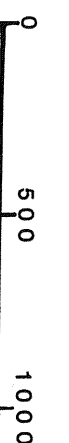
32

33

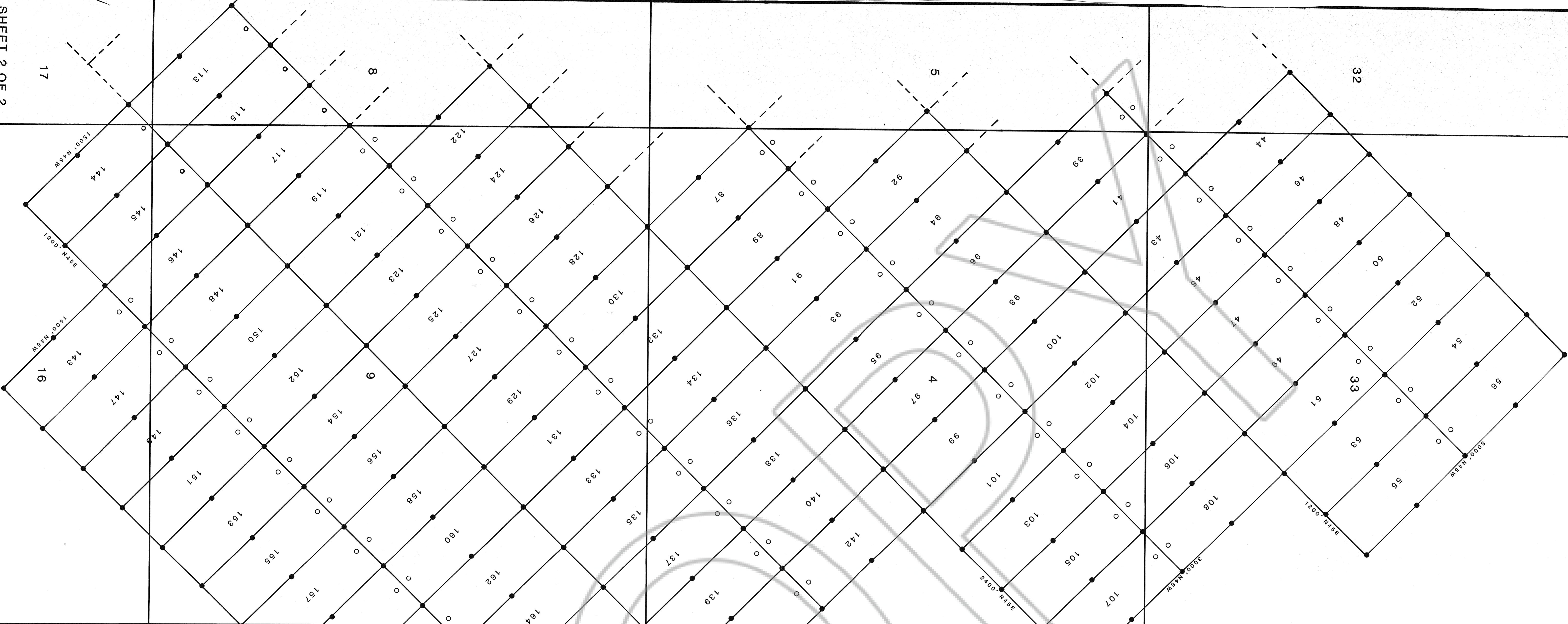
FILED AT THE REQUEST OF
Great Basin Exploration and Mining
 3400 Kauli Court Ste. # 208
 Reno, Nevada 89509
 Recorder of Deeds, Nevada
 File No. 13S/143
 Fee \$ 1200

GOLDEN SAGE 1-170 LODE CLAIM GROUP

T24N & T25N R50E
 Eureka County, Nevada



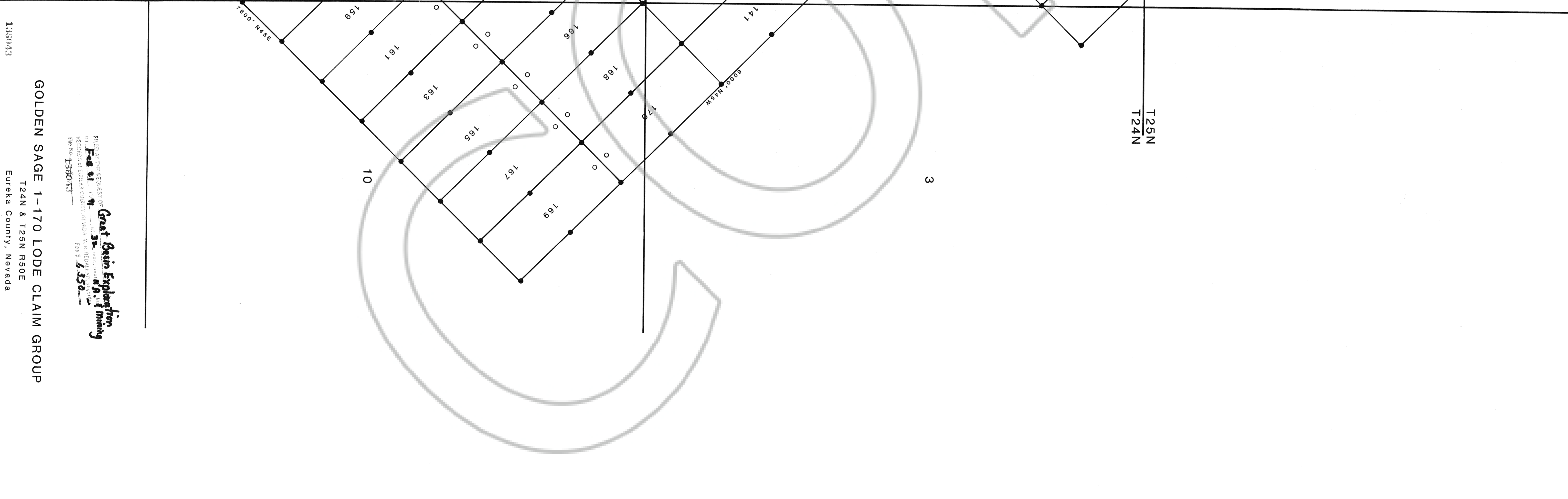
R50E



T25N
T24N

3

10



133043

GOLDEN SAGE 1-170 LODE CLAIM GROUP

T24N & T25N R50E
Eureka County, Nevada

FILED IN THE OFFICE OF THE
State Engineer
 OF THE STATE OF NEVADA
 RECORDS OF STATE CLAIMS AND MINING
 FILE NO. **136013**
 FEB 5 1958

17

32

5

144, 145, 146, 147, 148, 149, 150, 151, 152, 153, 154, 155, 156, 157, 158, 159, 160, 161, 162, 163, 164, 165, 166, 167, 168, 169
 118, 119, 120, 121, 122, 123, 124, 125, 126, 127, 128, 129, 130, 131, 132, 133, 134, 135, 136, 137, 138, 139, 140, 141
 87, 88, 89, 90, 91, 92, 93, 94, 95, 96, 97, 98, 99, 100, 101, 102, 103, 104, 105, 106, 107, 108, 109
 44, 45, 46, 47, 48, 49, 50, 51, 52, 53, 54, 55, 56