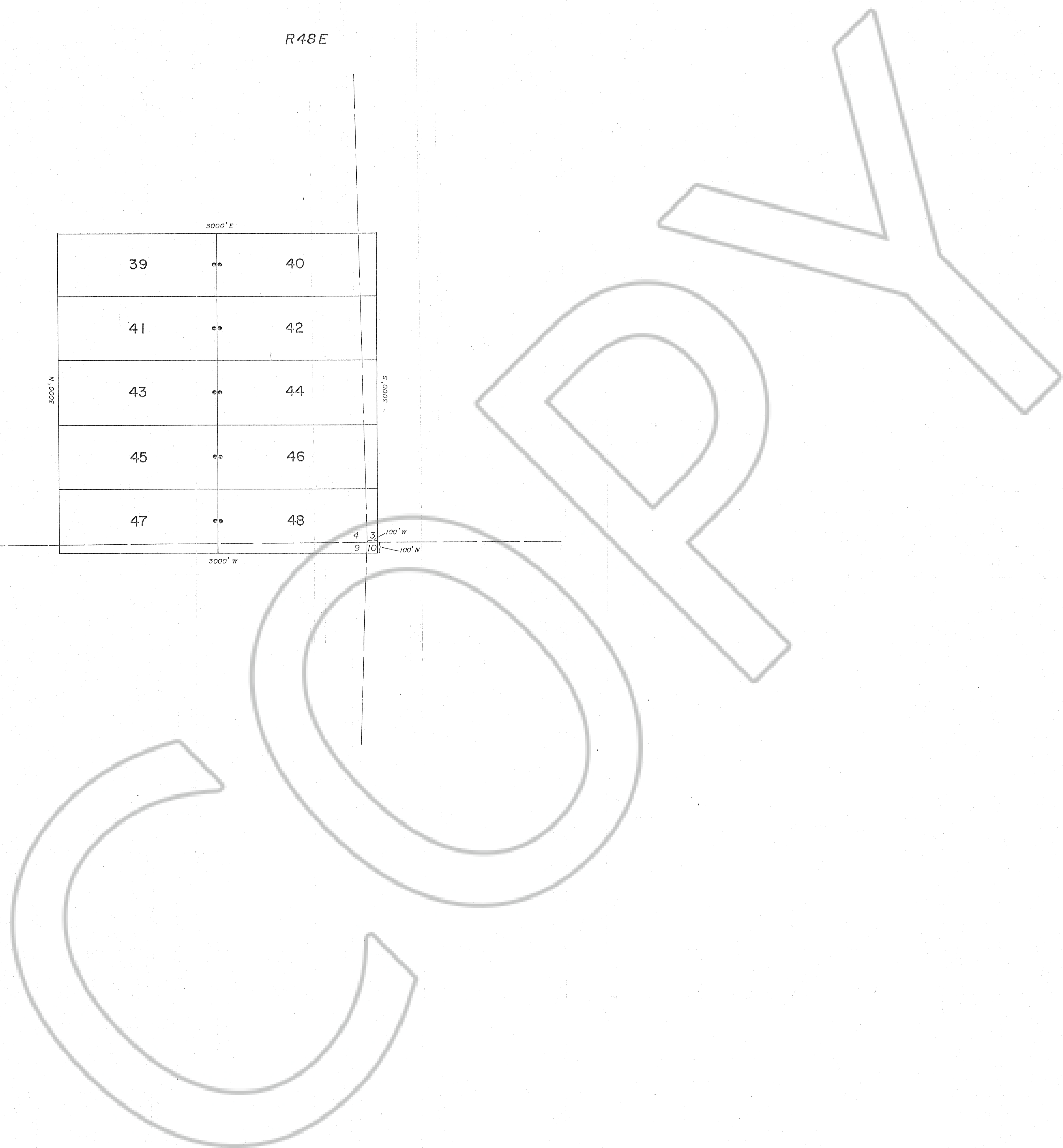


R48E

T32N



LOCATED FOR

CAMBIOR USA, INC.  
230 S. Rock Blvd., Suite 23  
Reno, NV 89502

LOCATED BY

MATTHEW B. POWELL

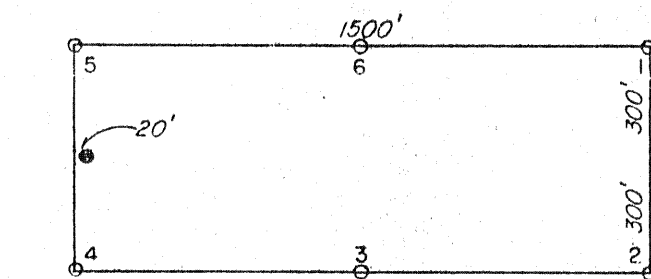
EUREKA COUNTY, NEVADA

T32N, R48E Sections 3, 4, 9, 10

• Location Monument

$\frac{27}{34}$  Section Corner  
 $\frac{26}{35}$

TYPICAL CLAIM

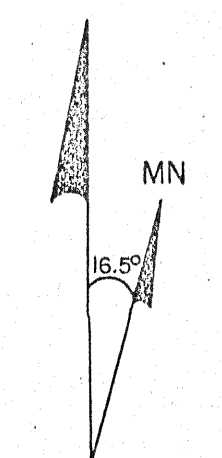


TIE

The NE corner Section 9, T32N, R48E  
is 100' W and 100' N of the SE corner of RE 48.

FILED AT THE REQUEST OF Cambior USA, Inc.  
on Feb 26<sup>th</sup> 91 at St. Louis, MO, Dist. 10th  
RECORDS OF EUREKA COUNTY, NEVADA M. H. REDAULT, Recorder  
File No. 138083 Fee \$ 100

138083



Magnetic Declination = 16.5°

**RE(39-48)LODE MINING CLAIMS**

|                     |                          |                |
|---------------------|--------------------------|----------------|
| Scale: 1"=500'      | Located: Jan. 19, 1991   | Drawn By: G.H. |
| Date: Jan. 22, 1991 | Completed: Jan. 19, 1991 | Revised:       |

By: **CONTRACT GEOLOGICAL SERVICES, INC.**

1395 Greg St., Suite 108, Sparks, NV 89431

Sheet 2 of 2  
DN34-13.02