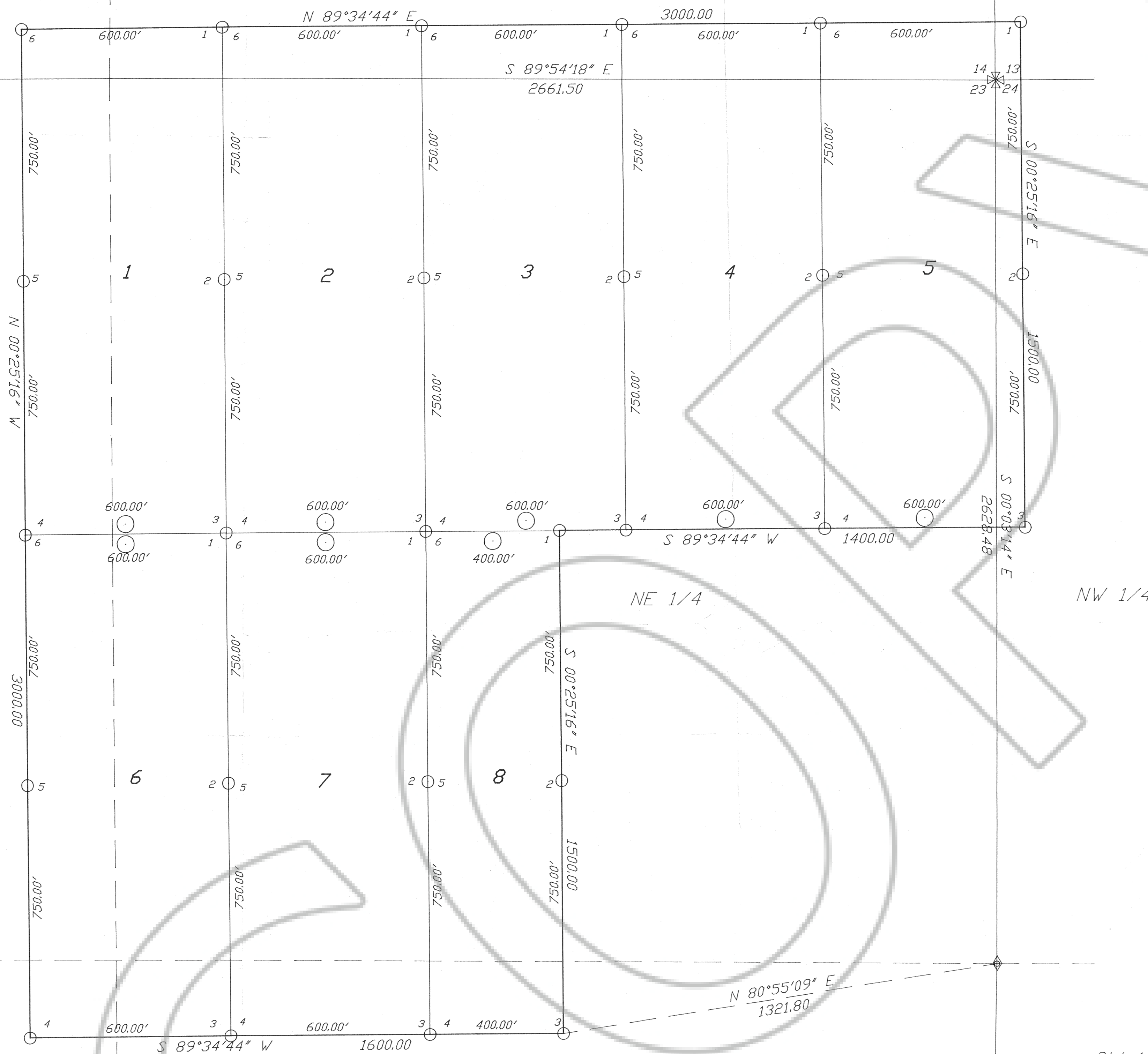


NW 1/4

SW 1/4

SE 1/4

SW 1/4



**BASIS OF BEARINGS:**

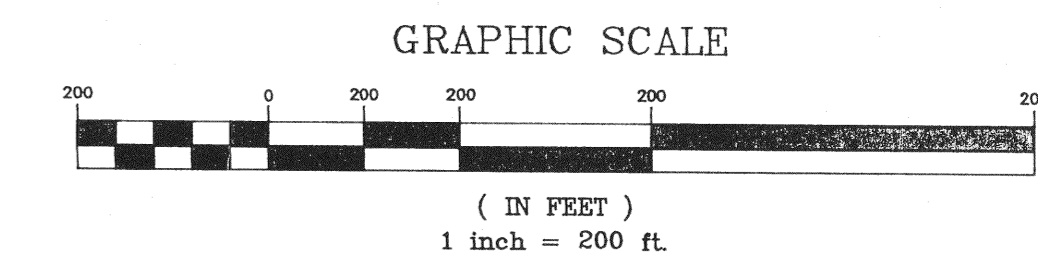
The line between the SW corner and the NW corner of Section 25, T.36 N., R.50 E., M.D.B. & M. taken as North 00 00'00" West by Western States Minerals.

**DATES OF LOCATION:**

NAME & No.	DATE LOCATED	DATE COMPLETED
Golden Wombat 1-8	February 6, 1991	February 6, 1991

**LEGEND:**

- ⊗ Section corner
- ⊙ 1/4 Section corner
- Set 4"x4" wood Post at claim corner
- Set 4"x4" wood Post at location monument



FILE NO. **135071**  
 FILED AT THE REQUEST OF  
*Barrick Goldstrike*  
 DATE Feb 28 1991  
 TIME 1:08 P.M.  
*M.M. Reblut*  
 EUREKA COUNTY RECORDER

MAP OF  
**GOLDEN WOMBAT LODE MINING CLAIMS**  
 LOCATED BY  
 BARRICK GOLDSTRIKE MINES INC.  
 P.O. BOX 29  
 ELKO NV, 8901  
 IN SECTIONS 13, 14, 23, & 24  
 T.36 N., R.49 E., M.D.B. & M.  
 EUREKA COUNTY, LYNN MINING DIST NEVADA

**SUMMIT** ENGINEERING CORPORATION  
 CONSULTING ENGINEERS AND SURVEYORS  
 847 SOUTH PAPER STREET  
 EUREKA, NEVADA 89001 (702) 798-0888

SHEET	1
OF	1