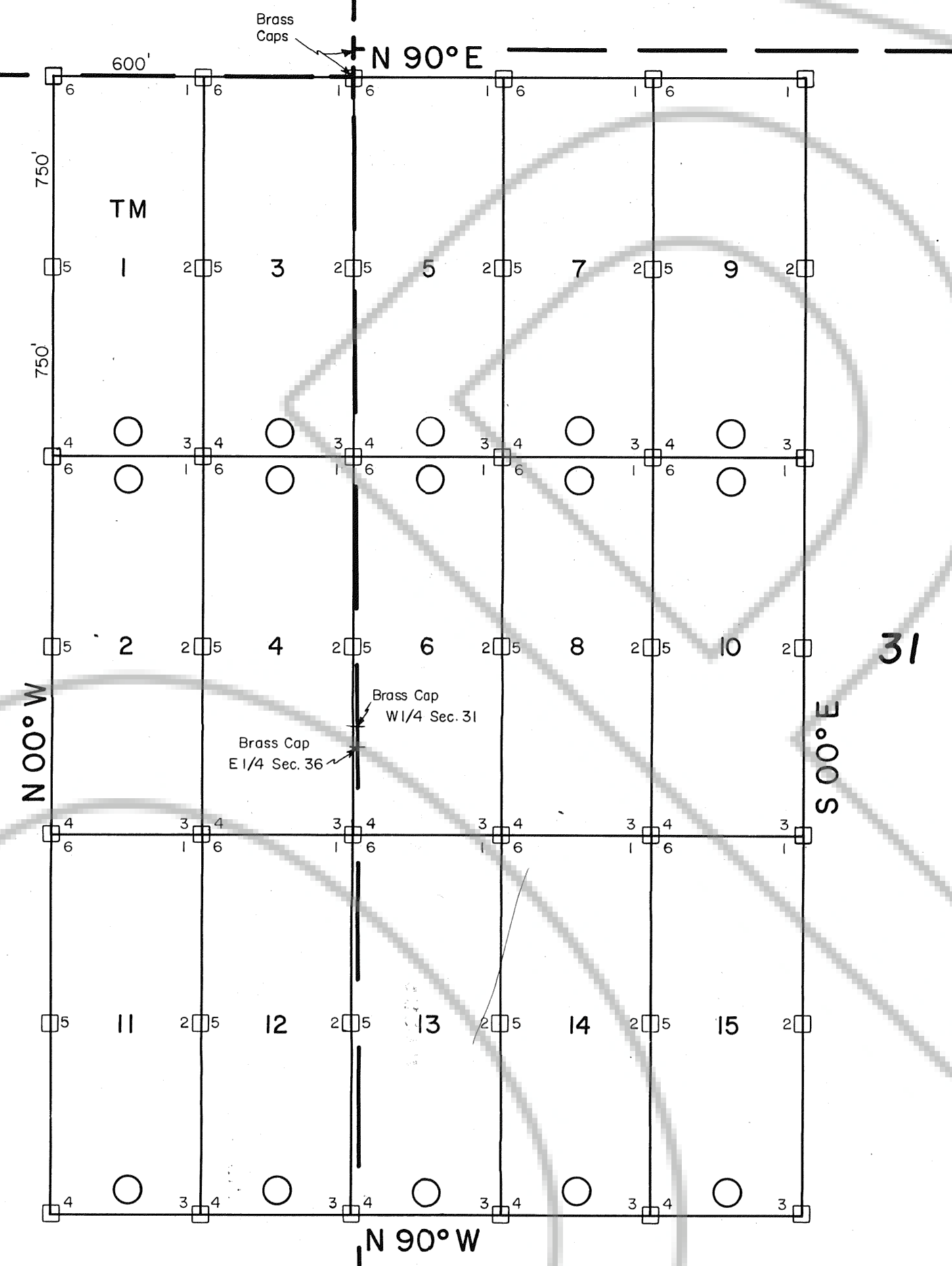


R. 51 E. | R. 52 E.

25

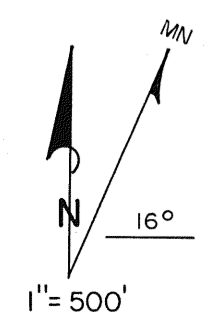
30



36

31

T. 26 N.
T. 25 N.



○ LOCATION MONUMENT
 ALL CLAIMS ARE 600'x1500' UNLESS OTHERWISE NOTED.
 ALL LOCATION MONUMENTS ARE OFFSET 10' FROM END CENTERS UNLESS OTHERWISE NOTED.
 ALL LOCATION MONUMENTS, SIDE CENTERS AND CORNERS ARE MONUMENTED WITH 3" DIA. BY 5' IN LENGTH PVC PIPE.
 BEARINGS SHOWN HEREON ARE TRUE BEARINGS.

MAP

LODE MINING CLAIMS
 WITHIN
 TOWNSHIP 26 NORTH, RANGES 51 & 52 EAST
 MOUNT DIABLO MERIDIAN
 EUREKA COUNTY, NEVADA
 FOR
WESTERN MINING CORPORATION (USA)
 240 SOUTH ROCK BLVD., SUITE 137
 RENO, NEVADA 89502

FILED AT THE REQUEST OF *Western Mining*
 on *March 28 1991* at *10* AM by *J.A.V.*
 RECORDS OF EUREKA COUNTY, NEVADA M.N. REBA: *ee*
 File No. **136390** Fee \$ *225.00*

136390

TM CLAIMS 1-15
 LOCATED - FEBRUARY 7 & 8, 1991