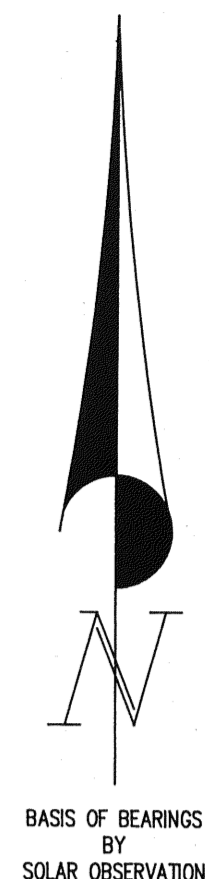
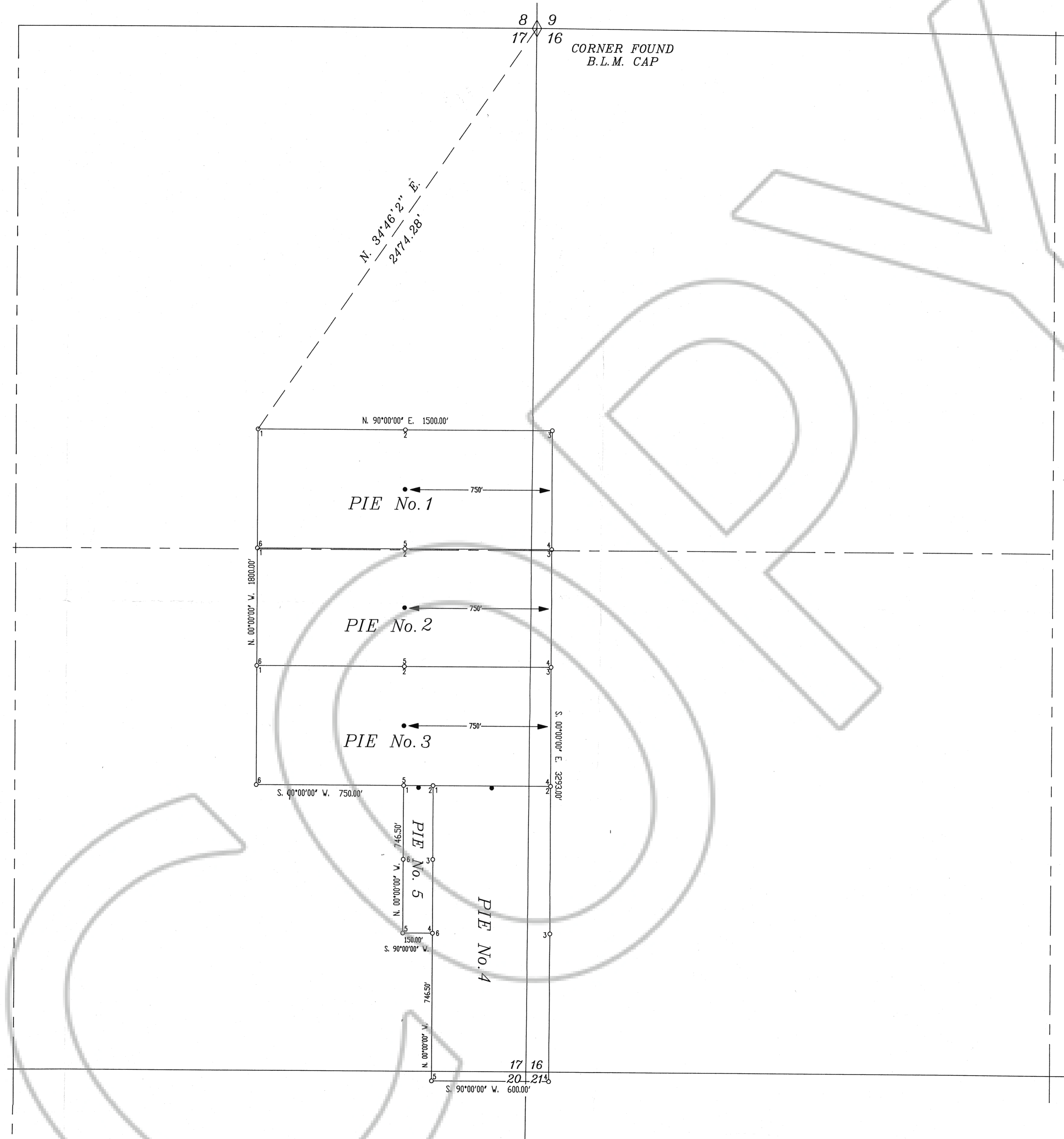


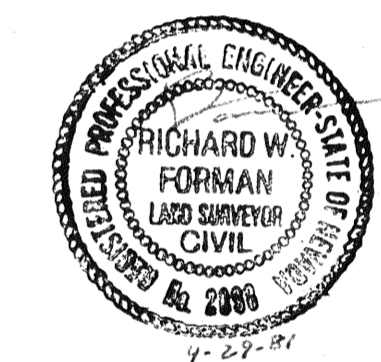
T.25 N., R.49 E., M.D.B. & M.



CERTIFICATION

I, Richard W. Forman, do hereby certify that this plat is a true and accurate map of a survey made under my supervision and direction between the 8th day of March, 1991 and the 12th day of March, 1991.

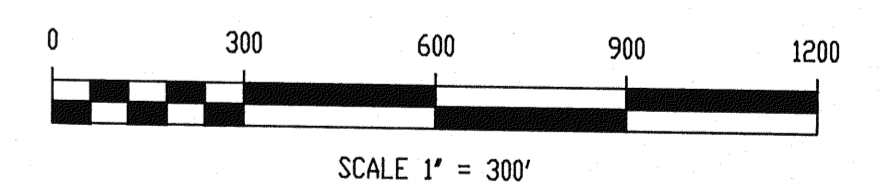
Richard W. Forman
Richard W. Forman, P.E., P.L.S.



NOTES:

1. All claims are 600' wide x 1500' long with Location Monuments 10' from end lines, except as otherwise shown and noted.
2. At all Corners, Side Centers and Location Monuments are 3" diameter x 5' long posts with aluminum tags denoting the appropriate corners.
3. o = Corner and Side Center posts.
• = Location Monuments.
4. These claims were located by: SANTA FE PACIFIC MINING, INC.
250 South Rock Blvd., Suite 100
Reno, Nevada 89502
5. PIE Nos. 1-4 were located on March 8th, 1991.
PIE No. 5 was located on March 12th, 1991.
6. There is a total of 5 claims.

FILED AT THE REQUEST OF *Santa Fe Pacific Mining Co.*
on May 1 19 91, at 54 mins, past 11 a.m.
RECORDS OF EUREKA COUNTY, NEVADA M. N. REBALEATI, Recorder
File No. 1-2393 Fee \$ 75.00



136511

PREPARED
BY
BOUNDY & FORMAN, INC.
ELY, NEVADA
APRIL, 1991

MAP SHOWING
PIE LODGE MINING CLAIMS
IN
T.25 N., R.49 E., M.D.B. & M.
EUREKA COUNTY, NEVADA
FOR
SANTA FE PACIFIC MINING, INC.