

MARKINGS ON ALUMINUM MONUMENT CAPS

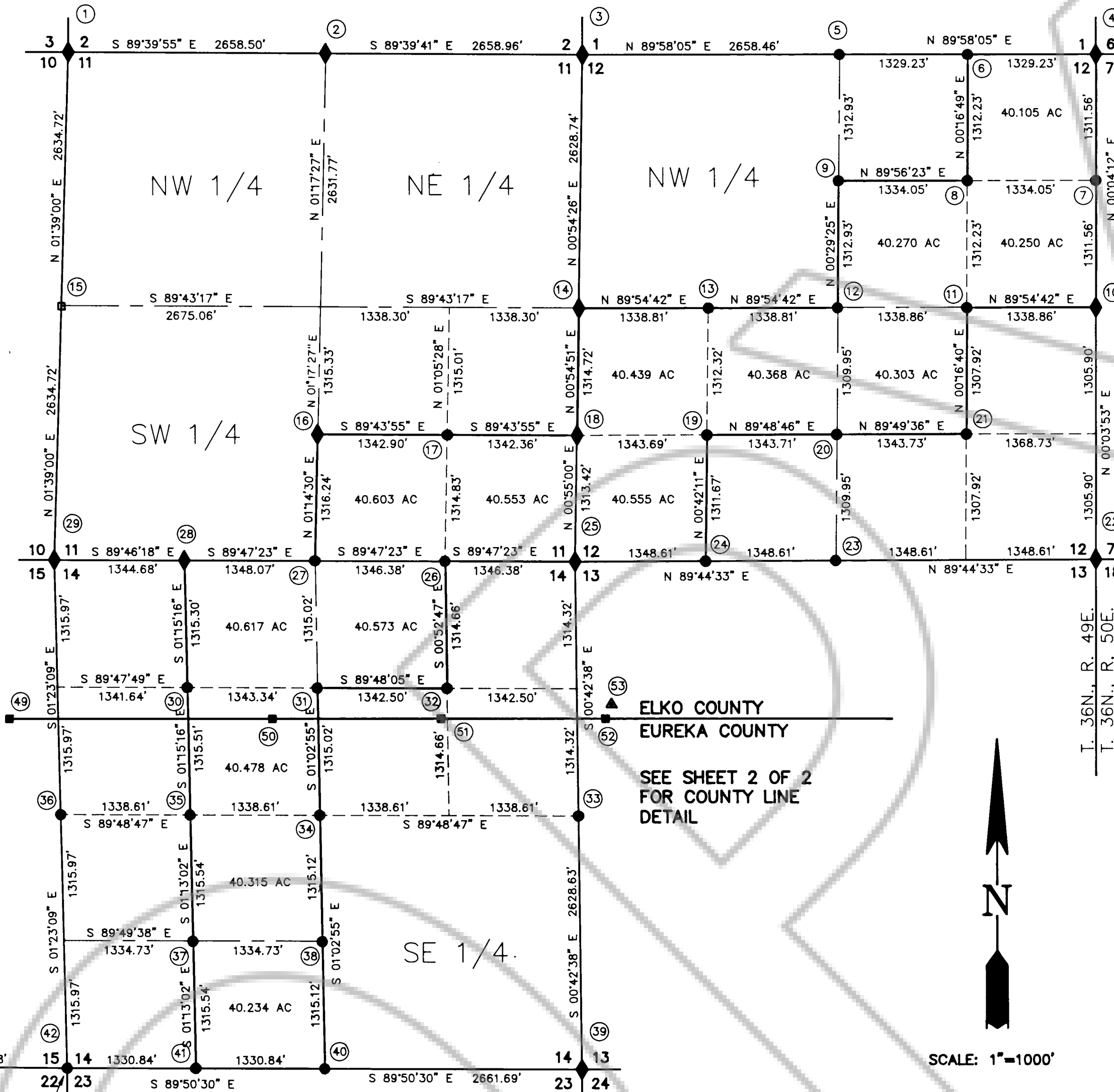


HISTORICAL DATA

THE EASTERLY ONE-HALF OF TOWNSHIP 36 NORTH, RANGE 49 EAST, MOUNT DIABLO MERIDIAN WAS ORIGINALLY SURVEYED IN 1872 BY AN ASSOCIATION OF THREE SURVEYORS A.J. HATCH, J. H. EATON AND J. C. SMYLES. THE MONUMENTATION SET BY THESE SURVEYORS WAS TYPICALLY CHARRIED WOOD POSTS WITH PITS. THE SOUTHWESTERLY PORTION OF THE TOWNSHIP WAS SURVEYED IN 1913 BY WINFRED A. PRAY USING STANDARD GENERAL LAND OFFICE BRASS CAPS AND MARKED ROCKS. THE NORTHWESTERLY PORTION OF THE TOWNSHIP REMAINS UNSURVEYED. THE FIRST MODERN RETRACEMENT OF THE EARLIER SURVEYS WAS CONDUCTED IN 1970 BY MARK CHILTON AS MINERAL SURVEY NO. 4906 AND A RECORD OF SURVEY LOCATED AT FILE NUMBERS 50323 AND 54489 OF THE OFFICIAL RECORDS OF ELKO COUNTY. THE NEXT RETRACEMENT WAS CONDUCTED BY PAUL N. SCHERBEL IN 1988 AS EVIDENCED BY A RECORD OF SURVEY LOCATED AT FILE NUMBER 124962 OF THE OFFICIAL RECORDS OF ELKO COUNTY. IN 1989 ARNOLD C. WOOD RETRACED A PORTION OF THE SOUTH BOUNDARY OF THE TOWNSHIP AND FILED A RECORD OF SURVEY AT FILE NUMBER 129836 OF THE OFFICIAL RECORDS OF ELKO COUNTY. SUMMIT ENGINEERING, THOMAS C. BAILEW, RETRACED SECTIONS 13 THROUGH 15, 22 THROUGH 28, AND 33 THROUGH 36 IN 1990. AS OF THIS DATE, THIS SURVEY HAS NOT BEEN RECORDED IN EITHER ELKO OR EUREKA COUNTIES. ALL OF THE ABOVE INFORMATION WAS USED IN THE RETRACEMENT OF THE LAND SHOWN ON THIS MAP. MOST OF THE ORIGINAL MONUMENTATION SET BY THE ORIGINAL SURVEY WAS OBLITERATED BY NUMEROUS RANGE FIRES SINCE 1872. CORNER RECOVERY NOTES FROM THE BUREAU OF LAND MANAGEMENT AND CORNER RECORDATION INFORMATION FROM ELKO AND EUREKA COUNTIES WERE USED IN THE RETRACEMENT OF THIS SURVEY. NEW CORNER RECORDATION ON MONUMENTS SET AND FOUND BY THIS SURVEY WILL BE RECORDED WITH THIS MAP.

SURVEYING EQUIPMENT AND ACCURACY

THIS SURVEY WAS MADE WITH A HEWLETT-PACKARD ELECTRONIC TOTAL STATION, MODEL NO. 3820A, SERIAL NO. 1850A00201, WHICH UTILIZES ELECTRONIC HORIZONTAL AND VERTICAL CIRCLES THAT DISPLAY MEASURED HORIZONTAL AND ZENITH ANGLES DIRECTLY IN DEGREES, MINUTES, AND SECONDS. ALL LINES OF THIS SURVEY WERE MEASURED WITH THIS INSTRUMENT WHICH USES A LASER BEAM TO MEASURE THE SLOPE DIST. FROM THE INSTRUMENT TOWARD A REFLECTOR LOCATED AT THE POINTS TO BE MEASURED. THE SLOPE DIST. IS REDUCED TO HOR. DIST. WITHIN THE INSTRUMENT BY AN ELECTRONIC COMPUTING DEVICE AND DISPLAYS THE HOR. DIST. DIRECTLY TO THE NEAREST THOUSANDTH OF A FT. THE INSTRUMENT WAS TESTED AND CALIBRATED ON A BASE LINE OF KNOWN LENGTH BEFORE AND AFTER THIS SURVEY WAS COMPLETED AND FOUND TO BE IN GOOD ADJUSTMENT DURING THE TIME THAT THIS SURVEY WAS EXECUTED. THE SURVEY SHOWN ON THIS MAP IS BASED ON THE EXISTING BOOTSTRAP CONTROL SYSTEM THAT HAS BEEN EXTENDED EASTERLY AND SOUTHERLY FOR THE PURPOSE OF THIS RETRACEMENT. EACH CONTROL TRAVERSE WAS CLOSED UPON ITSELF TO AN ACCURACY OF AT LEAST ONE PART IN TWENTY-FIVE THOUSAND. SIDE SHOTS TO LAND CORNERS WERE MADE BY MULTIPLE ANGLE AND DISTANCE MEASUREMENTS FROM THE ESTABLISHED CONTROL POINTS.

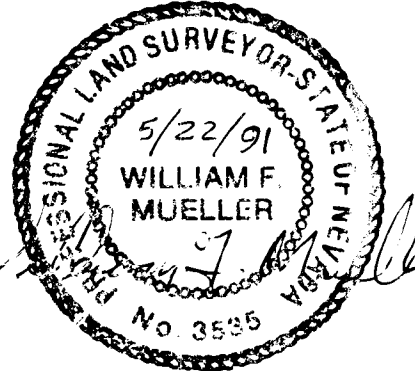


BASIS OF BEARING

THE BASIS OF BEARING FOR THIS SURVEY IS THE BOOTSTRAP CONTROL SYSTEM USED IN THE RECORD OF SURVEY OF THE BOOTSTRAP MINE AT FILE NUMBER 54489 IN ELKO COUNTY OFFICIAL RECORDS. THE LINE USED WAS FROM CONTROL POINT "F" TO THE 1/4 SECTION CORNER BETWEEN SECTION 2 AND 11 AS BEING N 31°00'34" E., 5960.58 FEET.

SURVEYORS CERTIFICATE

I, WILLIAM F. MUELLER, NEVADA PROFESSIONAL LAND SURVEYOR NO 3535, HEREBY CERTIFY THAT THIS MAP IS AN ACCURATE REPRESENTATION OF A SURVEY PERFORMED UNDER MY SUPERVISION AT THE INSTANCE OF NEWMONT GOLD COMPANY. THE SURVEY WAS COMPLETED FEBRUARY 25, 1991. I ALSO CERTIFY THAT THE MONUMENTS ARE OF THE CHARACTER AND OCCUPY THE POSITIONS INDICATED AND ARE SUFFICIENT TO RETRACE THE SURVEY.



COUNTY RECORDING INFORMATION

FILE NO. 306477
FILED AT THE REQUEST OF
DATE 5-22, 19 91
TIME 2:58 P. M.
S/S JERRY D. REYNOLDS
ELKO COUNTY RECORDER

FILE NO. 135733
FILED AT THE REQUEST OF 4500
Newmont Gold Company
DATE May 23, 19 91
TIME 1:55 P. M.
EUREKA COUNTY RECORDER

LEGEND

- FOUND SECTION CORNER MONUMENT AS NOTED
- FOUND 1/4 SECTION OR 1/16 CORNER MONUMENT AS NOTED
- FOUND 5/8" DIA. REBAR AND YELLOW CAP MARKED R.L.S. 5072
- SET SEC. COR., 1/4 OR 1/16 SEC. COR. MONUMENT AS NOTED
- CALCULATED POSITION OF 1/4 SEC. COR. AS NOTED
- SET ELKO-EUREKA COUNTY LINE MONUMENT AS NOTED
- SET FIRST ORDER GEODETIC CONTROL POINT AS NOTED
- FOUND FIRST ORDER U.S.C. & G.S. GEODETIC STATION AS NOTED
- SNFV RECORD MONUMENT SEARCHED FOR BUT NOT FOUND
- SP MONUMENT POSITION ESTABLISHED BY SINGLE PROPORTION METHOD
- DP MONUMENT POSITION ESTABLISHED BY DOUBLE PROPORTION METHOD
- B.C. FOUND RECORD BRASS CAP MONUMENT
- A.C. FOUND OR SET ALUMINUM CAP MONUMENT
- I.P. IRON PIPE
- R.O.S. RECORD OF SURVEY
- N.S.P. NEVADA STATE PLAIN COORDINATE SYSTEM 1927 DATUM
- NEWMONT GOLD COMPANY BOUNDARY LINE

RECORD OF SURVEY

SECTIONS 11, 12, AND 14 T.36N., R.49E., M.D.M.
ELKO AND EUREKA COUNTIES, NEVADA
FOR
NEWMONT GOLD COMPANY

CHILTON Engineering and Surveying, LTD
421 Court Street
(702) 738-2121
Elko, Nevada 89801

91003

1/2