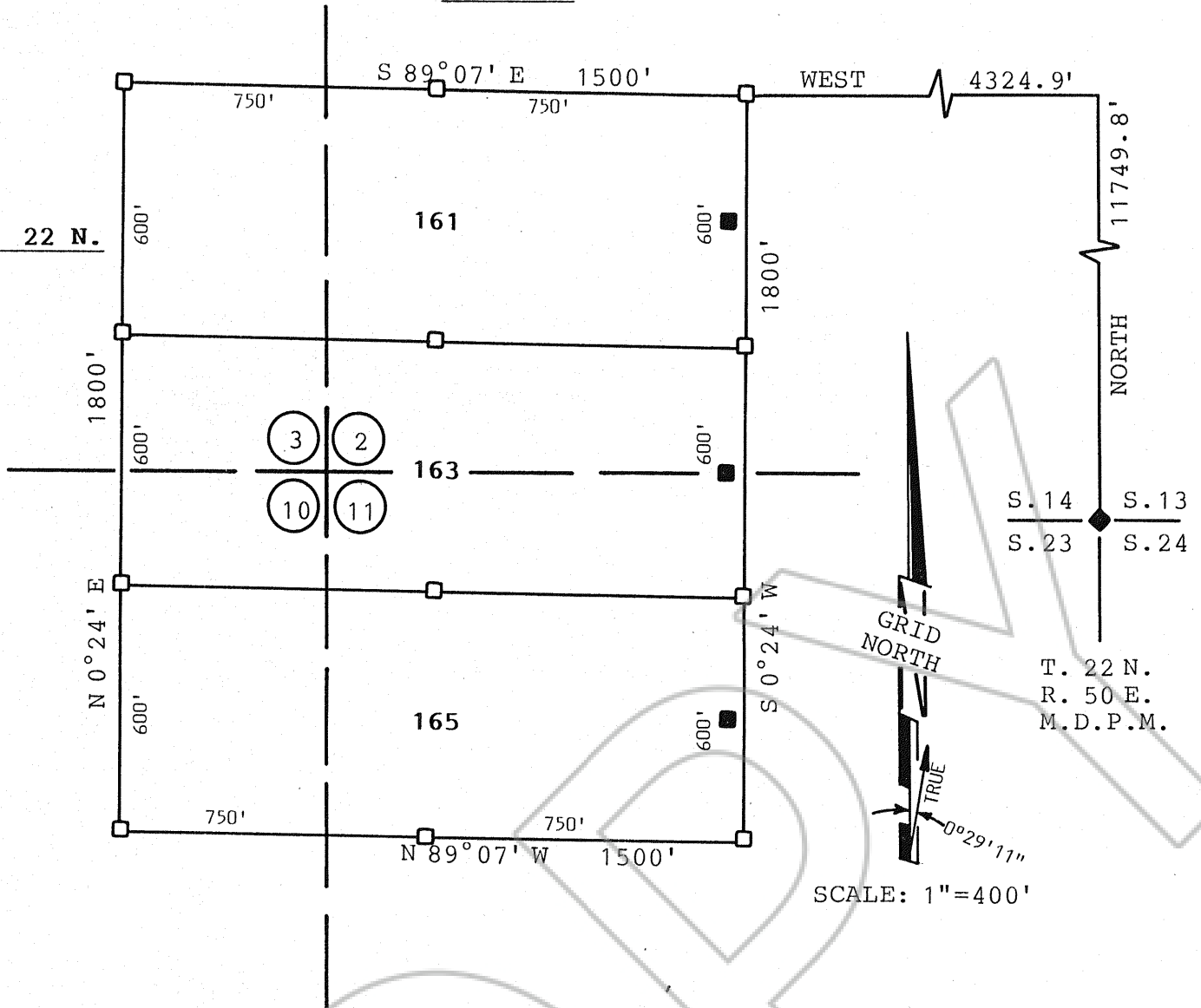


R. 50 E.

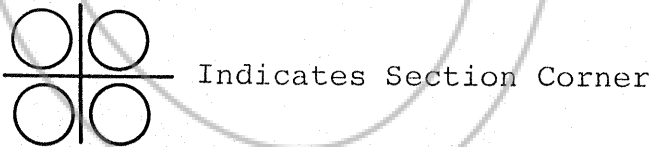
T. 22 N.



- NOTES:**
- 1.) Location monuments are 10' from end line of claim unless otherwise shown.
 - 2.) Section corners and lines are from the Nevada Protraction Diagram.
 - 3.) Bearings shown are grid and referenced to the Nevada State Plane Coordinate System, East Zone (distances shown are surface, not sea level).

LEGEND

- - 4"X 4"X 4' wood post location monument
- - 4"X 4"X 4' wood post monument adjacent to 5/8"X 18" rebar



LOCATION DATE
OF SECOND AMENDMENT: May 4, 1991

FILED AT THE REQUEST OF Atlas Gold Mining
on May 29 1991, at 24 mins, past 11 A. M.
RECORDS of EUREKA COUNTY, NEVADA M. N. REBALEATI Recorder
File No. 136743 Fee \$ 45.00

136743

MAP OF THE SECOND AMENDMENT
WI LODE MINING CLAIMS
CLAIMS 161, 163, 165
EUREKA COUNTY, NEVADA

LOCATED BY TERRY ZENK
AGENT FOR
ATLAS GOLD MINING, INC.
SUITE 3150
370 17th Street
DENVER, COLORADO 80202
May 15, 1991

APEX SURVEYING, INC. RIVERTON, WYOMING