

LOCATION DATE: APRIL 1, 1991 1-51

NOTES

ALL CLAIMS ARE 600' X 1500' UNLESS OTHERWISE SHOWN
 LOCATION MONUMENTS ARE 10' FROM END LINE OF CLAIM UNLESS OTHERWISE SHOWN.

LEGEND

- ☒ 3 1/2" X 3 1/2" X 4' WOOD POST LOCATION MONUMENT
- 3 1/2" X 3 1/2" X 4' WOOD POST MONUMENT
- ○ ○ ○ INDICATES SECTION CORNER

TIE: SOUTHWEST CORNER SECTION 36,
 T.30 N., R.48 E., MT. DIABLO M.
 NORTH 190' TO THE SW COR. CLAIM 22

TIE: NORTHWEST CORNER SECTION 2,
 T.29 N., R.48 E., MT. DIABLO M.
 NORTHWEST CORNER CLAIM 23

R.48 E.

T.30 N.

T.29 N.

SHEET 1 of 3

MAP OF THE
HOT SPRING LODGE MINING CLAIMS
 Eureka County, Nevada

T.29 N., T.30 N., R.48E.
 Located by Richard D. Inberg
 AGENT FOR
NEWMONT EXPLORATION LIMITED
 P.O. Box 669
 Carlin, Nevada 89801
 APRIL 15, 1991

APEX SURVEYING INC. RIVERTON, WYOMING

FILED AT THE REQUEST OF *Newmont Exploration Limited*
 1991, at 3:00 p.m., Dist 30, M.
 RECORDS OF EUREKA COUNTY, NEVADA M. N. REBELEATI, Recorder
 File No. **137018** Fee \$ 265.00

SEE SHEET 2 of 3
 142
 143
 144
 145

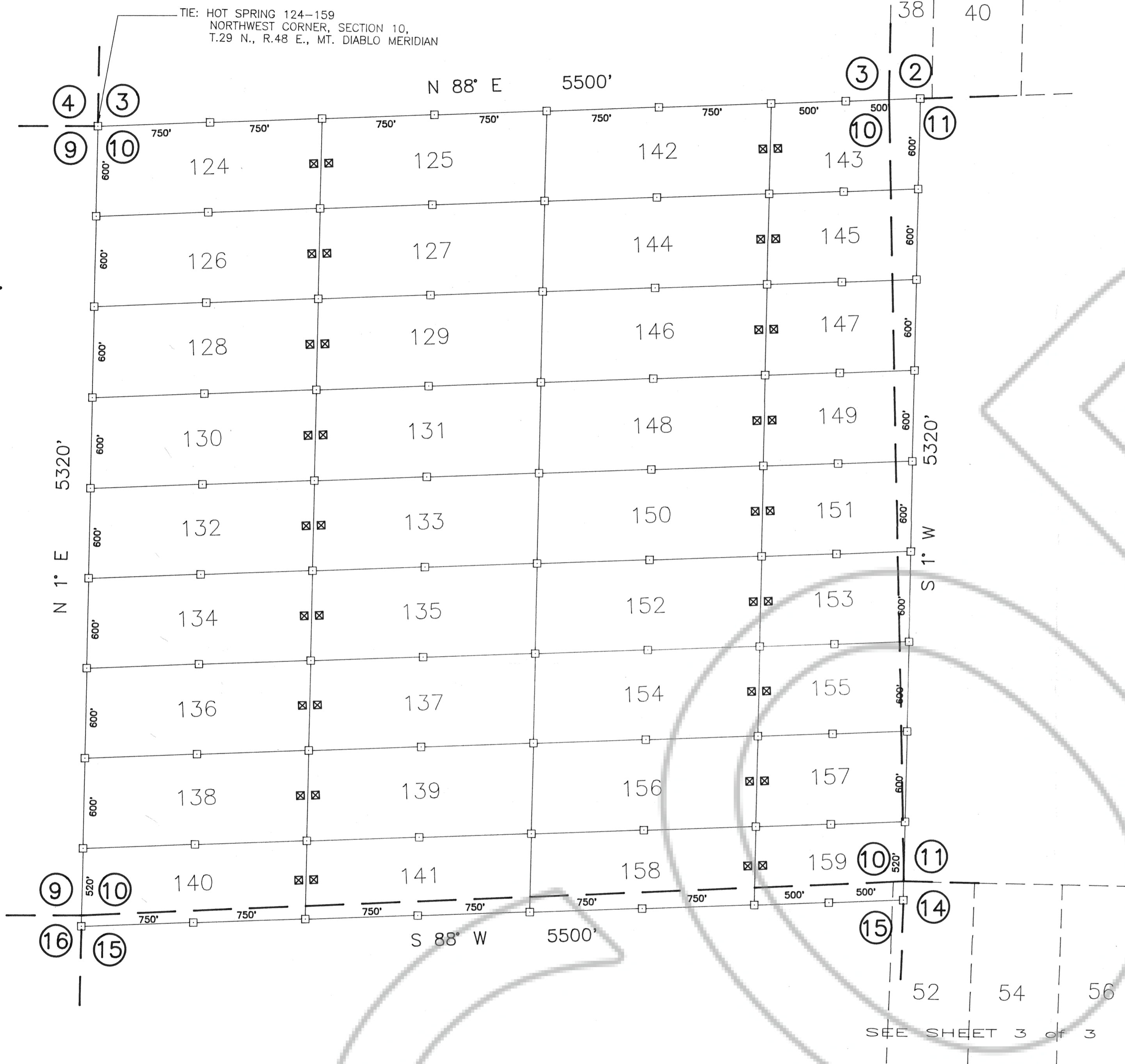
DWG. NO. \ACAD\CLAIMS\NEWMONT\91C010-1

R. 48 E.

SEE SHEET 1 of 3

TIE: HOT SPRING 124-159
NORTHWEST CORNER, SECTION 10,
T.29 N., R.48 E., MT. DIABLO MERIDIAN

T. 29 N.



SEE SHEET 3 of 3

NOTES

ALL CLAIMS ARE 600' X 1500' UNLESS OTHERWISE SHOWN
LOCATION MONUMENTS ARE 10' FROM END LINE OF CLAIM
UNLESS OTHERWISE SHOWN.

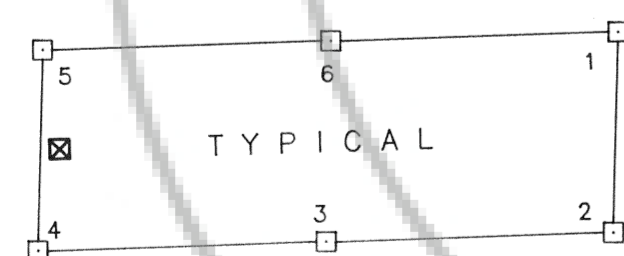
LEGEND

- ☒ 3 1/2" X 3 1/2" X 4' WOOD POST LOCATION MONUMENT
- 3 1/2" X 3 1/2" X 4' WOOD POST MONUMENT
- ○ INDICATES SECTION CORNER

LOCATION DATE:
APRIL 3, 1991 124-159



SCALE 1" = 500'



SHEET 2 of 3

MAP OF THE
HOT SPRING LODGE MINING CLAIMS
Eureka County, Nevada

T.29 N., R.48 E.
Located by Richard D. Inberg
AGENT FOR
NEWMONT EXPLORATION LIMITED

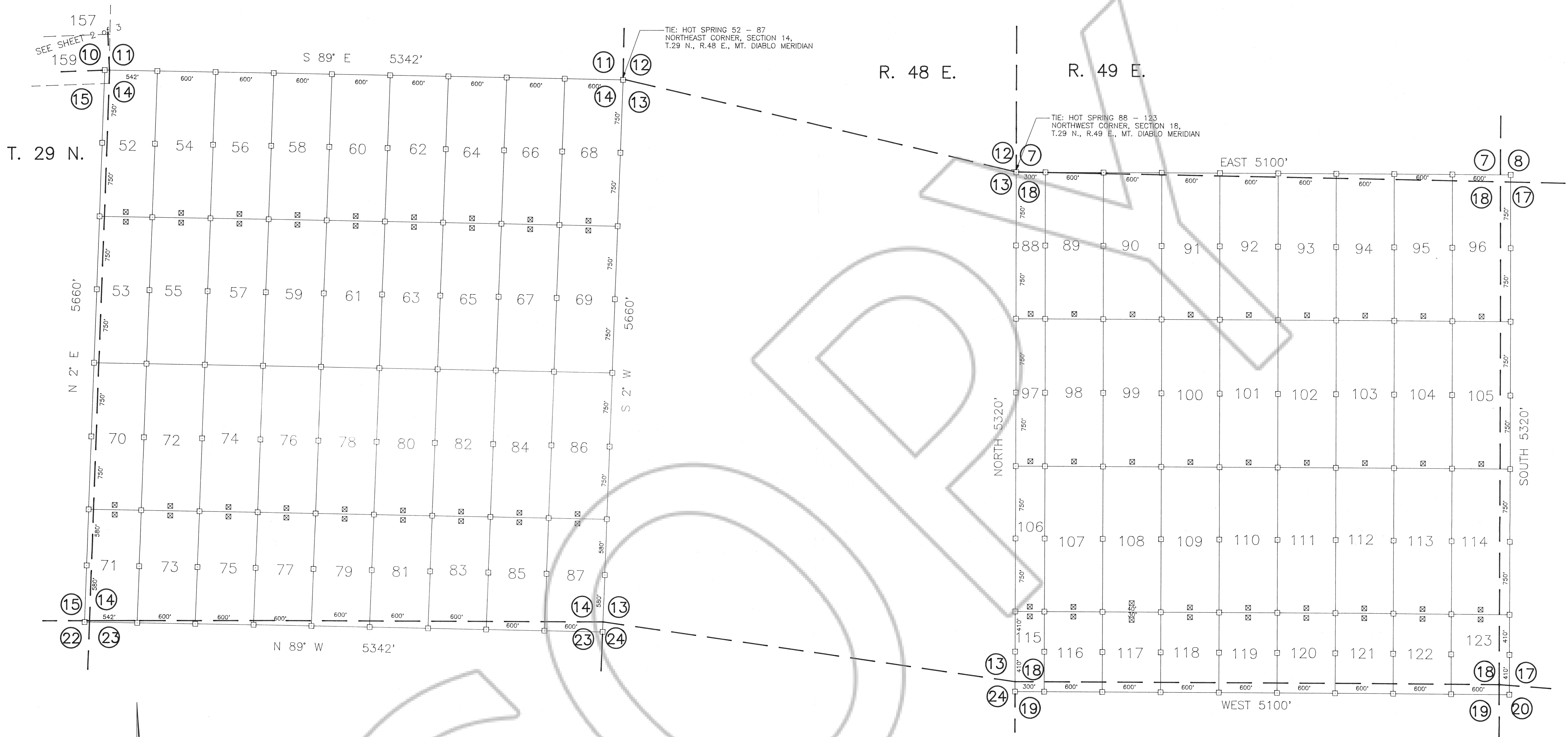
P.O. Box 669
Carlin, Nevada 89822

APRIL 15, 1991

APEX SURVEYING INC. RIVERTON, WYOMING

FILED AT THE REQUEST OF *Newmont Exploration Limited*
on *June 16, 1991*, at *3:22* mins, past *3:30* M.
RECORDS OF EUREKA COUNTY, NEVADA M. N. REBALEATI, Recorder
File No. 137018 Fee \$ 5.00

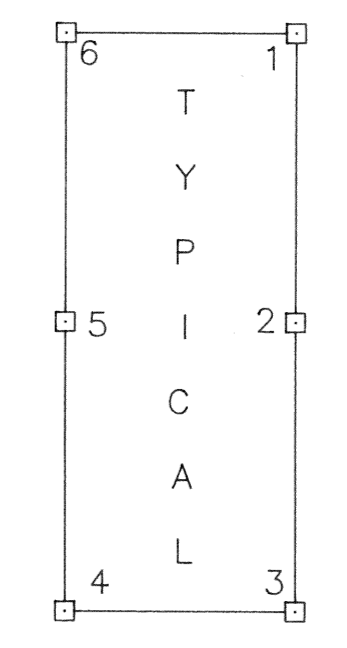
DWG NO. \ACAD\CLAIMS\NEWMONT\91C010-2



LOCATION DATE:
 APRIL 1, 1991 52-69, 76-87
 APRIL 2, 1991 88-123
 APRIL 3, 1991 70-75

NOTES
 ALL CLAIMS ARE 600' X 1500' UNLESS OTHERWISE SHOWN
 LOCATION MONUMENTS ARE 10' FROM END LINE OF CLAIM
 UNLESS OTHERWISE SHOWN.

LEGEND
 ☒ 3 1/2" X 3 1/2" X 4' WOOD POST LOCATION MONUMENT
 □ 3 1/2" X 3 1/2" X 4' WOOD POST MONUMENT
 ○ ○ INDICATES SECTION CORNER



SHEET 3 of 3

MAP OF THE
HOT SPRING LODGE MINING CLAIMS
 Eureka County, Nevada

T.29 N., R.48 E. & R.49 E.
 Located by Richard D. Inberg
 AGENT FOR
NEWMONT EXPLORATION LIMITED
 P.O. Box 669
 Carlin, Nevada 89822
 April 15, 1991

APEX SURVEYING INC. RIVERTON, WYOMING

FILED AT THE REQUEST OF *Newmont Exploration Limited*
 on *April 11* 19 *91*, at *3:22* mins, past *3:22* P. M.
 RECORDS OF EUREKA COUNTY, NEVADA M. N. REBALEATI, Recorder
 File No. *137018* Fee \$ *1080*

DWG. NO. \ACAD\CLAIMS\NEWMONT\91C010-3

137018

157
 SEE SHEET 2
 159

SCALE 1" = 500'