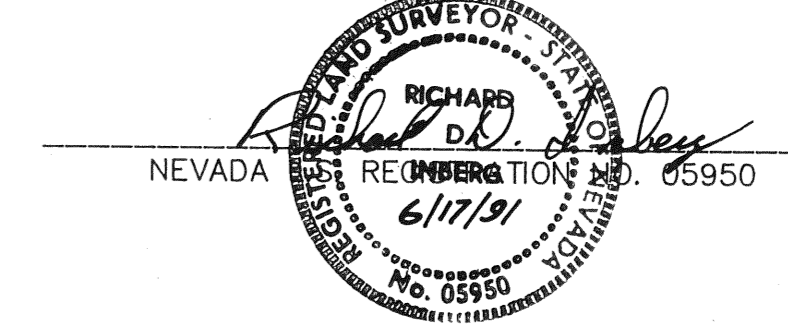


R. 50 E.

T. 22 N.

STATE OF WYOMING)
S.S.
COUNTY OF FREMONT)

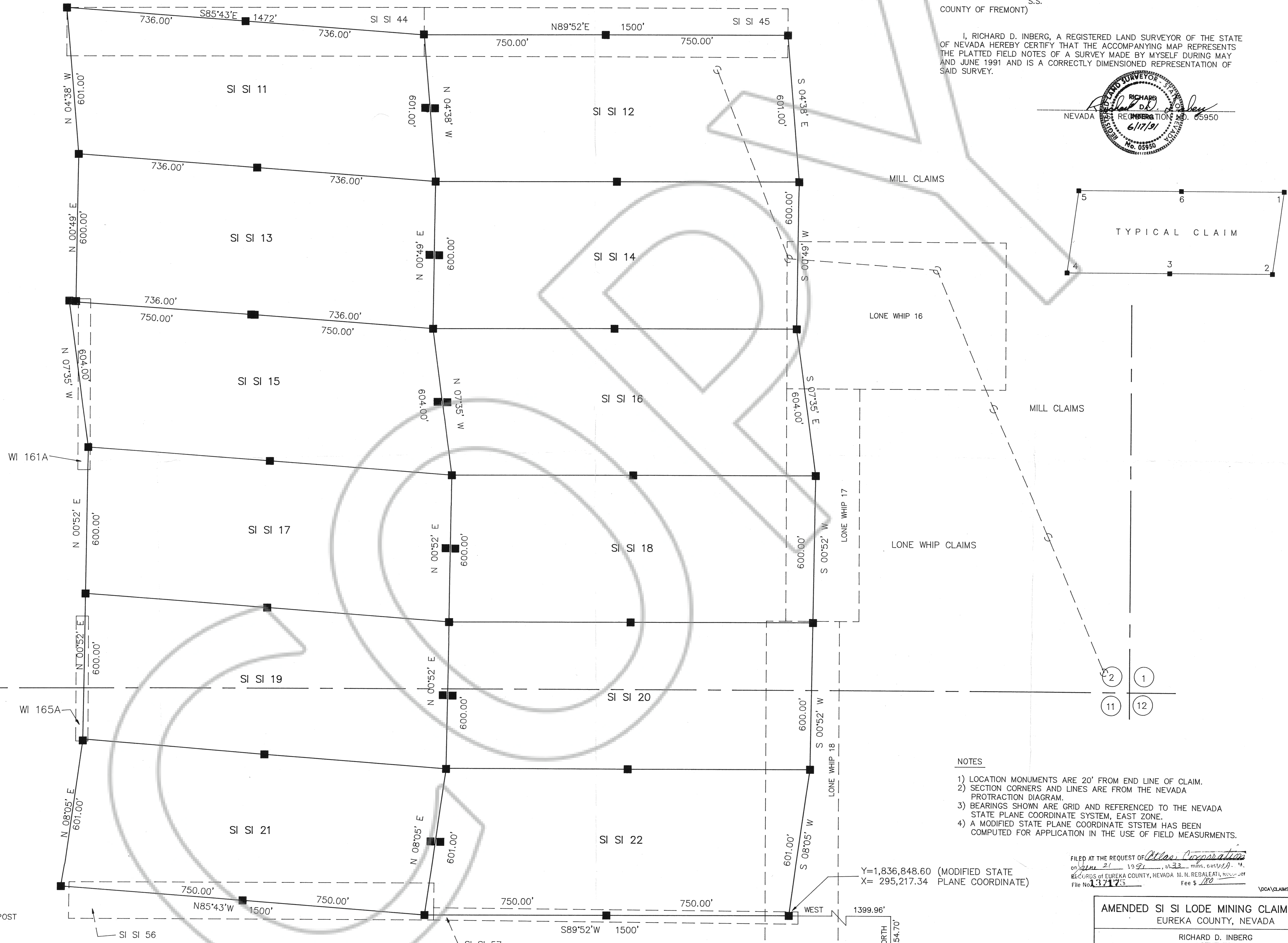
I, RICHARD D. INBERG, A REGISTERED LAND SURVEYOR OF THE STATE OF NEVADA HEREBY CERTIFY THAT THE ACCOMPANYING MAP REPRESENTS THE PLATTED FIELD NOTES OF A SURVEY MADE BY MYSELF DURING MAY AND JUNE 1991 AND IS A CORRECTLY DIMENSIONED REPRESENTATION OF SAID SURVEY.



WI CLAIMS



SCALE 1"=200'



3 2
10 11

2 1
11 12

AMENDED LOCATION DATES

JUNE 6, 1991 13 - 22
JUNE 7, 1991 11 & 12

LEGEND

■ - INDICATES 3-1/2" X 3-1/2" X 4' WOOD POST CLAIM CORNER OR LOCATION MONUMENT

○ ○ - INDICATES PROTRACTED SECTION CORNER

NOTES

- 1) LOCATION MONUMENTS ARE 20' FROM END LINE OF CLAIM.
- 2) SECTION CORNERS AND LINES ARE FROM THE NEVADA PROTRACTION DIAGRAM.
- 3) BEARINGS SHOWN ARE GRID AND REFERENCED TO THE NEVADA STATE PLANE COORDINATE SYSTEM, EAST ZONE.
- 4) A MODIFIED STATE PLANE COORDINATE SYSTEM HAS BEEN COMPUTED FOR APPLICATION IN THE USE OF FIELD MEASUREMENTS.

Y=1,836,848.60 (MODIFIED STATE PLANE COORDINATE)
X= 295,217.34

FILED AT THE REQUEST OF Atlas Corporation
on June 21, 1991, at 3:33 p.m., EUREKA COUNTY, NEVADA
RECORDS OF EUREKA COUNTY, NEVADA M. N. REBALEATI, RECORDER
File No. 137175 Fee \$ 120

LOCAL CLAIMS ATLAS 8905002

AMENDED SI SI LODE MINING CLAIMS 11-22
EUREKA COUNTY, NEVADA

RICHARD D. INBERG
AGENT FOR
ATLAS CORPORATION
370 17TH STREET, SUITE 3150
DENVER, COLORADO 80202

JUNE 17, 1991

APEX SURVEYING, INC. RIVERTON, WYOMING

137175

13 NORTH 9254.70'
11 12 TIE: NORTH EAST CORNER (3-1/2" ALUMINUM CAP)
SECTION 23,
T.22N., R.50E., M.D.P.M.