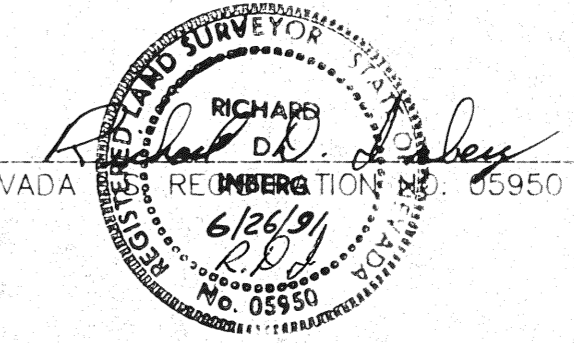


R. 50 E.

T. 22 N.

STATE OF WYOMING )  
COUNTY OF FREMONT, ) S.S.

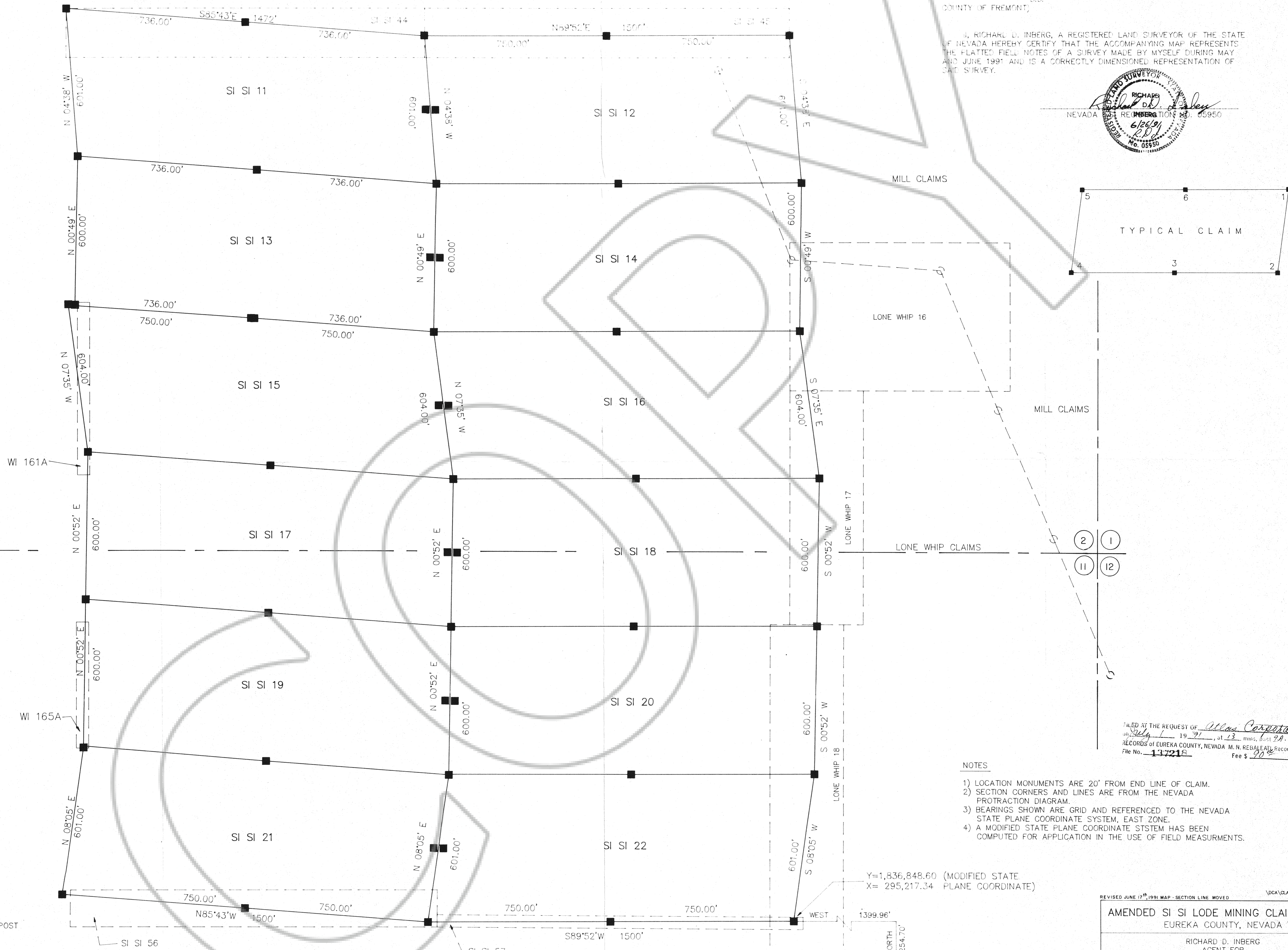
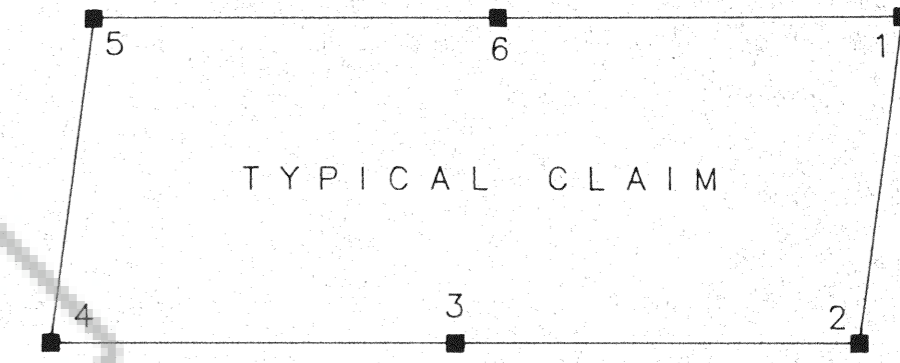
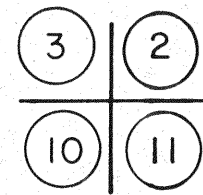
I, RICHARD D. INBERG, A REGISTERED LAND SURVEYOR OF THE STATE OF NEVADA HEREBY CERTIFY THAT THE ACCOMPANYING MAP REPRESENTS THE PLATTED FIELD NOTES OF A SURVEY MADE BY MYSELF DURING MAY AND JUNE 1991 AND IS A CORRECTLY DIMENSIONED REPRESENTATION OF SAID SURVEY.



WI CLAIMS



SCALE 1"=200'

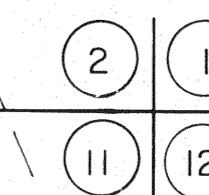


MILL CLAIMS

LONE WHIP 16

LONE WHIP 17

LONE WHIP CLAIMS

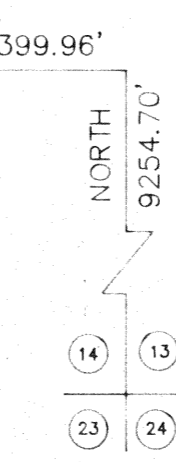


FILED AT THE REQUEST OF Atlas Corporation  
on July 1, 1991, at 1:33 p.m., Book 28, Page 11.  
RECORDS OF EUREKA COUNTY, NEVADA. M. N. REBELETTI, Recorder  
File No. 137216 Fee \$ 20.00

NOTES

- 1) LOCATION MONUMENTS ARE 20' FROM END LINE OF CLAIM.
- 2) SECTION CORNERS AND LINES ARE FROM THE NEVADA PROTRACTION DIAGRAM.
- 3) BEARINGS SHOWN ARE GRID AND REFERENCED TO THE NEVADA STATE PLANE COORDINATE SYSTEM, EAST ZONE.
- 4) A MODIFIED STATE PLANE COORDINATE SYSTEM HAS BEEN COMPUTED FOR APPLICATION IN THE USE OF FIELD MEASUREMENTS.

Y=1,836,848.60 (MODIFIED STATE PLANE COORDINATE)  
X= 295,217.34



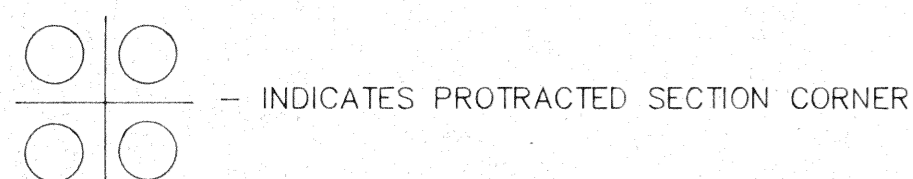
TIE:  
NORTHEAST CORNER (3-1/2" ALUMINUM CAP)  
SECTION 23,  
T.22N., R.50E., M.D.P.M.

AMENDED LOCATION DATES

JUNE 6, 1991 13 - 22  
JUNE 7, 1991 11 & 12

LEGEND

■ - INDICATES 3-1/2" X 3-1/2" X 4" WOOD POST CLAIM CORNER OR LOCATION MONUMENT



REVISED JUNE 17<sup>th</sup> 1991 MAP - SECTION LINE MOVED  
AMENDED SI SI LODE MINING CLAIMS 11-22  
EUREKA COUNTY, NEVADA

RICHARD D. INBERG  
AGENT FOR  
ATLAS CORPORATION  
370 17TH STREET, SUITE 3150  
DENVER, COLORADO 80202

JUNE 26, 1991

APEX SURVEYING, INC. RIVERTON, WYOMING