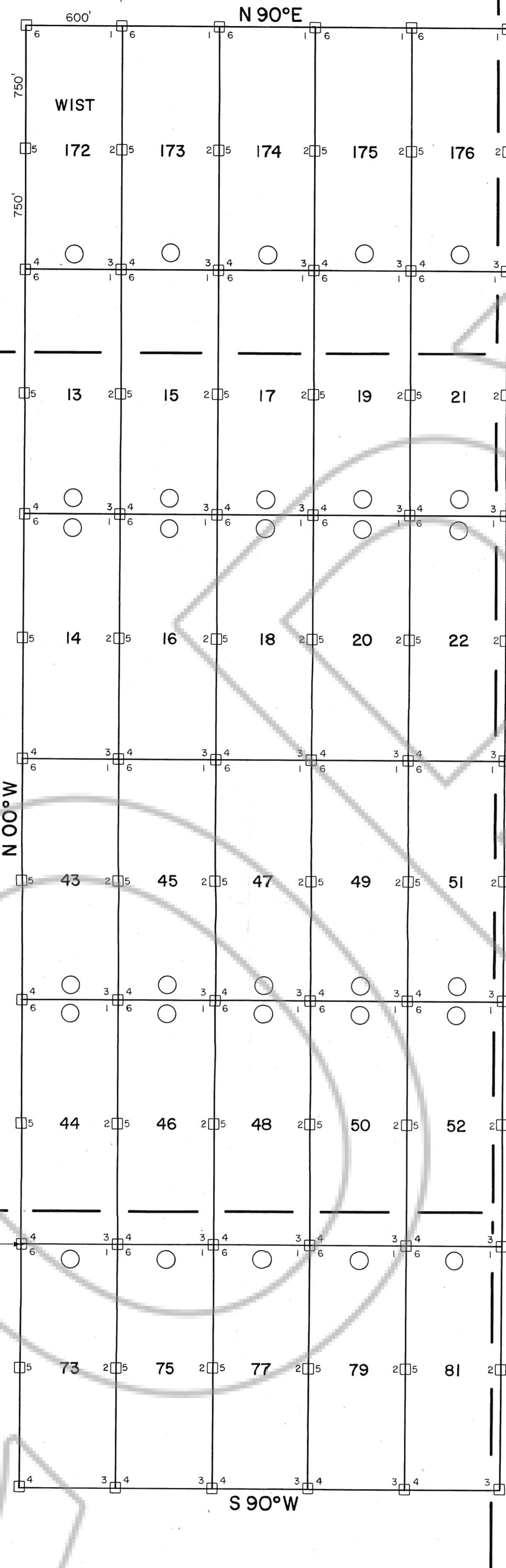


R. 51 E. R. 52 E.



18

17

19

20

30

29

T. 21 N.

○ - LOCATION MONUMENT

ALL CLAIMS ARE 600' x 1500' UNLESS OTHERWISE NOTED.

ALL LOCATION MONUMENTS ARE OFFSET 10' FROM END CENTERS UNLESS OTHERWISE NOTED.

ALL LOCATION MONUMENTS, SIDE CENTERS AND CORNERS ARE MONUMENTED WITH 3" DIA. BY 5' IN LENGTH PVC PIPE.

BEARINGS SHOWN HEREON ARE TRUE BEARINGS.

--- PROTRACTED SECTION LINE.

AMENDED MAP

OF
LODE MINING CLAIMS
WITHIN
TOWNSHIP 21 NORTH, RANGE 52 EAST
MOUNT DIABLO MERIDIAN
EUREKA COUNTY, NEVADA
FOR
WESTERN MINING CORPORATION (USA)
240 SOUTH ROCK BLVD., SUITE 137
RENO, NEVADA 89502

THIS AMENDED MAP IS MADE TO CURE ANY DEFECTS IN THE LOCATIONS OR MAINTENANCE OF THE CLAIMS SHOWN HEREON AND MAKES REFERENCE TO THE ORIGINAL EUREKA COUNTY RECORD MAP FILE NUMBER AS INDICATED BELOW.

135648

FILED AT THE REQUEST OF *Western Mining Corp.*
on *July 17* 19*91*, at *27* mins. past *10* A.M.
RECORDS OF EUREKA COUNTY, NEVADA M. N. REBALEATI, Recorder
File No. **137331** Fee \$ *200*

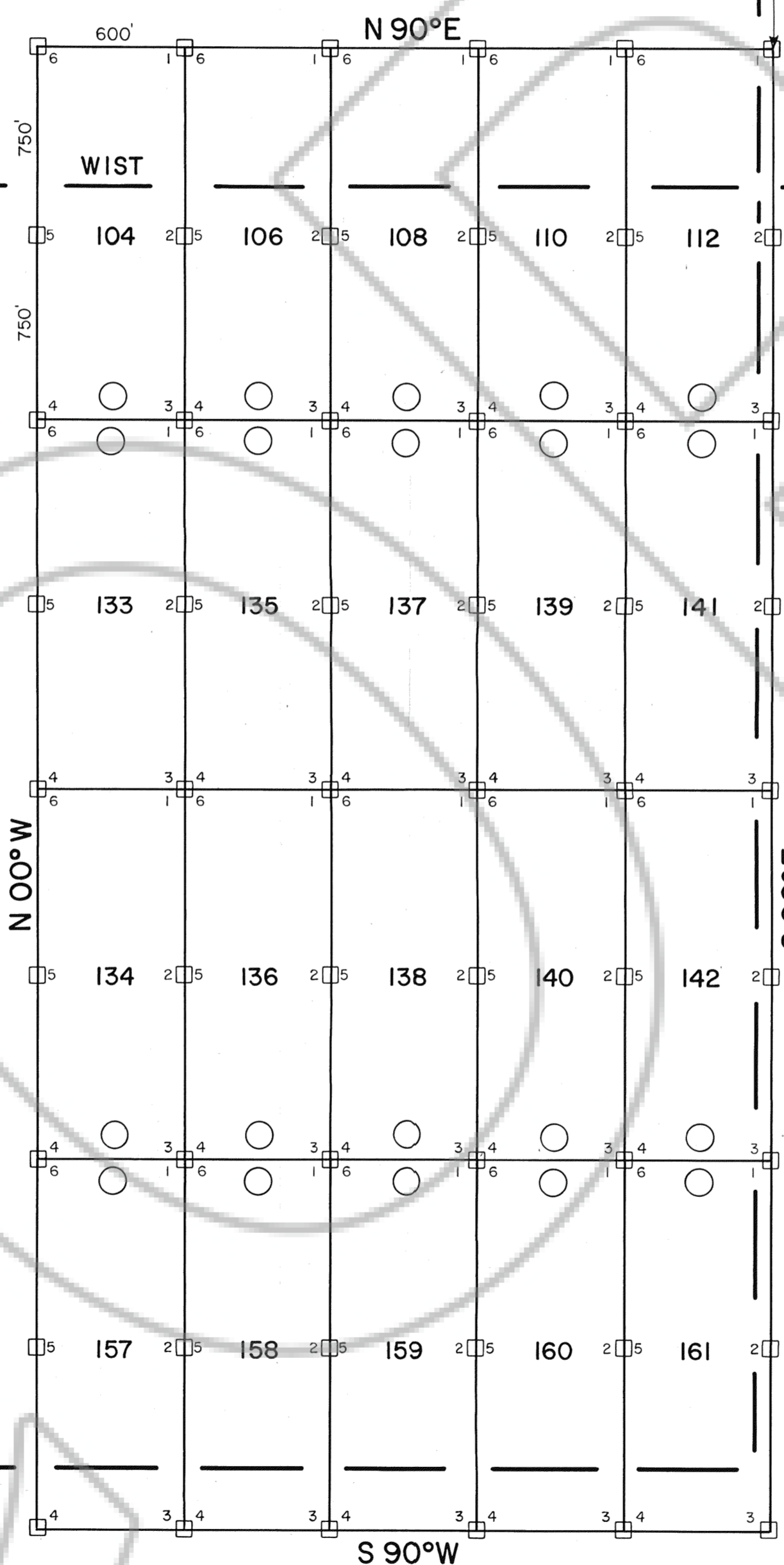
AMENDED WIST CLAIMS
13-22, 43-52, 73, 75, 77, 79, 81,
104, 106, 108, 110, 112, 133-142,
157-161, 172-176

R. 51 E. | R. 52 E.

WIST
73 75 77 79 81

30

29



R. 51 E. | R. 52 E.

6

32

T. 21 N.
T. 20 N.

5

○ = LOCATION MONUMENT
 ALL CLAIMS ARE 600'x1500' UNLESS OTHERWISE NOTED.
 ALL LOCATION MONUMENTS ARE OFFSET 10' FROM END CENTERS UNLESS OTHERWISE NOTED.
 ALL LOCATION MONUMENTS, SIDE CENTERS AND CORNERS ARE MONUMENTED WITH 3" DIA BY 5' IN LENGTH PVC PIPE.
 BEARINGS SHOWN HEREON ARE TRUE BEARINGS.
 - - - = PROTRACTED SECTION LINE.

AMENDED MAP
 OF
 LODE MINING CLAIMS
 WITHIN
 TOWNSHIPS 20 & 21 NORTH, RANGE 52 EAST
 MOUNT DIABLO MERIDIAN
 EUREKA COUNTY, NEVADA
 FOR
WESTERN MINING CORPORATION (USA)
 240 SOUTH ROCK BLVD., SUITE 137
 RENO, NEVADA 89502

THIS AMENDED MAP IS MADE TO CURE ANY DEFECTS IN THE LOCATIONS OR MAINTENANCE OF THE CLAIMS SHOWN HEREON AND MAKES REFERENCE TO THE ORIGINAL EUREKA COUNTY RECORD MAP FILE NUMBER AS INDICATED BELOW.
 135648

AMENDED WIST CLAIMS
 13-22, 43-52, 73, 75, 77, 79, 81,
 104, 106, 108, 110, 112, 133-142,
 157-161, 172-176

FILED AT THE REQUEST OF *Western Mining Corp*
 on *July 11* 19 *91*, at *11* mins. past *11* o'clock
 RECORDS OF EUREKA COUNTY, NEVADA BY N. REBALEATI, Recorder
 File No. *137331* Fee \$ *500*