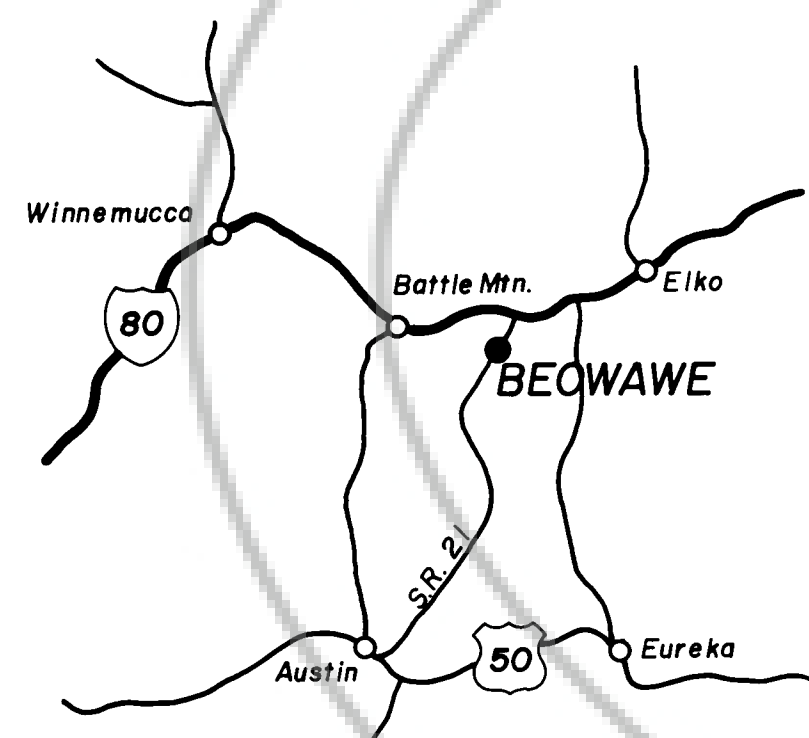


SCALE: 1" = 100'

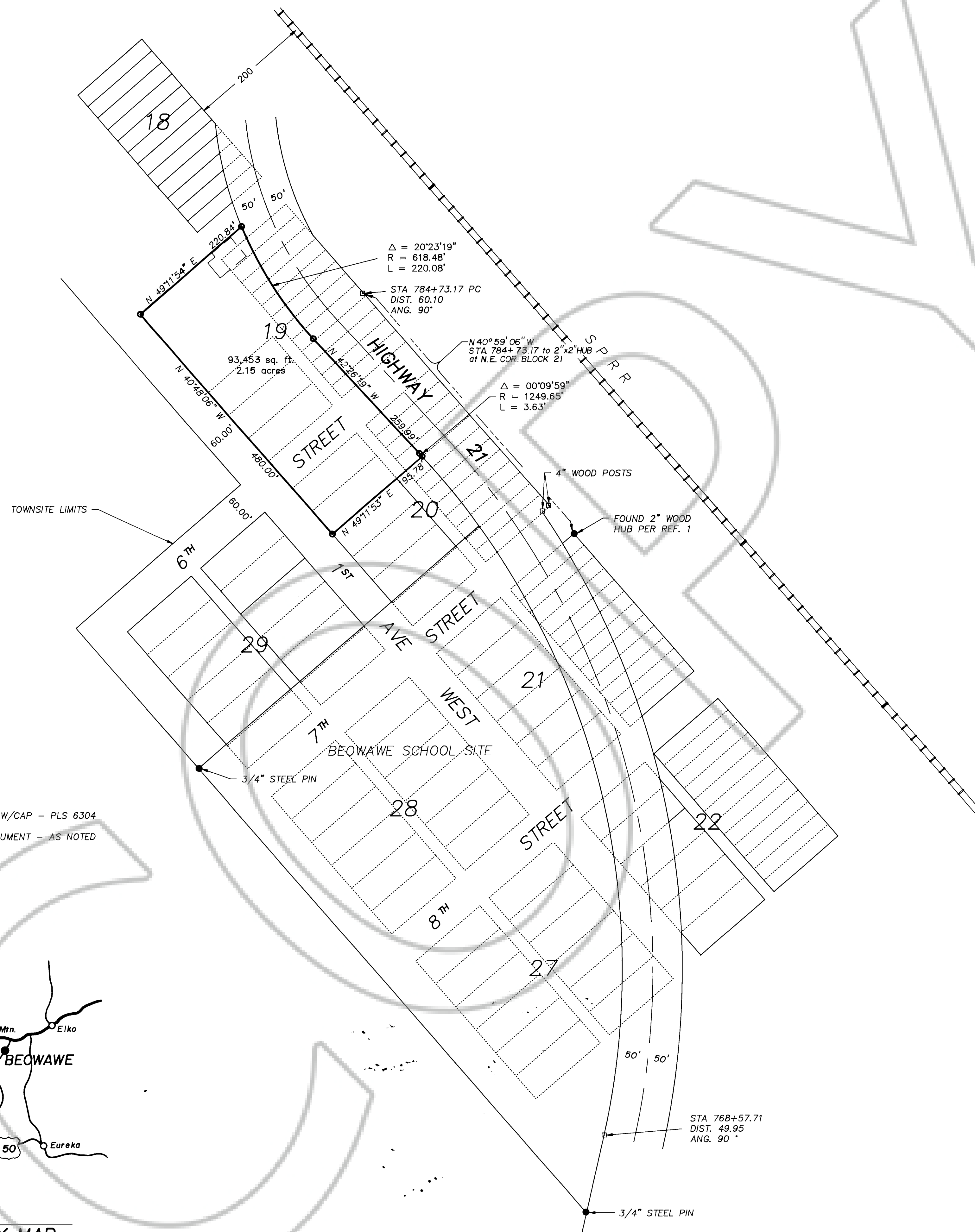
TOWNSITE LIMITS

LEGEND

- SET 5/8" REBAR W/CAP - PLS 6304
- FOUND NDOT MONUMENT - AS NOTED
- FOUND AS NOTED



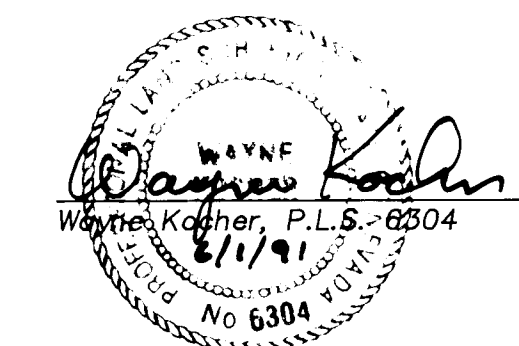
VICINITY MAP



SURVEYORS CERTIFICATE

I, Wayne Kocher, do hereby state that this is a true and accurate plat of the lands represented hereon as taken from the field notes of a survey made under my supervision at the instance of Eureka County, Nevada.

This survey was completed on the 1st day of June, 1991. The monuments are of the character and occupy the positions indicated hereon and are sufficient to enable this survey to be retraced.



BASIS OF BEARING

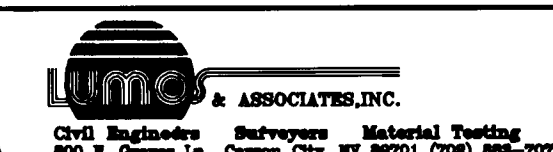
The bearing of N 40°59'06\"/>

REFERENCE DOCUMENTS

- A) A survey of the Eureka County School Site by Chilton Engineering, No. 67048.
- B) Beowawe School Development Plan by Chilton Engineering, No. 80105.
- C) NDOT Right of Way Maps, SR 21, Eureka County, Nevada, Nov. 1956.

FILED AT THE REQUEST OF Eureka County
ON July 24, 1991, AT 35 MINS, PAST 2 P.M.
RECORDS OF EUREKA COUNTY, NEVADA. M. N. REBALEATI, RECORDER.
FILE NO. 137351 FEE \$ No Fee

RECORD OF SURVEY
OF
BEOWAWE MAINTENANCE FACILITY
FOR
EUREKA COUNTY
A PORTION OF BLOCKS 19 & 20, BEOWAWE TOWNSITE
SITUATE IN THE NW 1/4, SECTION 5, T. 31 N., R. 49 E., M.D.M.
EUREKA COUNTY, NEVADA



DATE: JUNE 1991

JOB NO. 1795-7

137351