

Once recorded, please return to:  
Attn: Land Department  
BHP-Utah International Inc.  
550 California St.  
San Francisco, CA 94104

138400

1990-1991 AFFIDAVIT OF ANNUAL ASSESSMENT WORK

STATE OF CALIFORNIA        )  
                                  )ss  
CITY AND COUNTY OF        )  
SAN FRANCISCO             )

W. Kirk Williams, being first duly sworn, states and says:

1. That in making this affidavit he is acting for and on behalf of BHP-Utah International Exploration Inc., a Delaware Corporation, the owner or Lessee of the mining claims listed below.

2. That this Affidavit is made for the purpose of showing and making of record the performance of annual assessment or representative work as required by law for the assessment year beginning at 12 o'clock meridian September 1, 1990, and ending on September 1, 1991, on the following unpatented lode mining claims located in Sections 1 & 2 Township 18 North, Range 49 East; Sections 25, 26, 35 & 36 Township 19 North, Range 49 East; and Sections 30 & 31 Township 19 North, Range 50 East; MDB&M, Eureka County, State of Nevada as follows:

See Exhibit "A" attached hereto and incorporated herein by this reference

3. That BHP-Utah International Exploration Inc. expended at least \$13,000.00 in money for labor or value of improvements on or for the benefit of said claims consisting of:

Geologic, geochemical & geophysical surveys as provided by 30 U.S.C. 28-1; a detailed report is attached to this affidavit and incorporated herein by this reference.

(Being a statement of a portion only of the entire work done and not intended as a complete account of all work.)

4. That the work was performed primarily on the following claims:

(TSH #5, 7, 9, 11, 13, 15, 17, 19, 21, 23, 25, and 33 - 55)  
See attached map relating the work locations to the claim block

5. That the period of time during which the work was performed was:

August 1, 1991 through August 31, 1991.

6. That the owner of the claims is:

BOOK 227 PAGE 581

BHP-Utah International Exploration Inc.  
5330 South 900 East, Suite 200  
Salt Lake City, UT 84117-7261

7. That primarily the following parties performed and made said labor and improvements:

Work performed by:

Craig Beasley, Ph.D. and four-man crew of BHP-Utah International Inc.

Description of work performed:

Geophysics - I.P. Resistivity and VLF

D.L. Merrick & G.D. Minnick FLG, Inc.  
P.O. Box 21542  
Salt Lake City, UT 84121

Geochemical soil survey and Geological Field Evaluation

Geochemical Services Inc.  
1490 Kleppe Lane  
Sparks, Nevada 89431

Soil analysis

J. P. Schloderer  
BHP-Utah International

Geologic field evaluation and sample collection

8. That the above work, valued in excess of ONE HUNDRED DOLLARS (\$100.00) per claim, has been expended for the benefit of said claims and that this work develops or tends directly to develop the mineral resources and the exploration thereof and facilitates and leads to the extraction of minerals therefrom.

9. That the above claims are being held for the valuable mineral content contained therein.

The affiant swears under penalty of perjury that the foregoing is true and correct.

Dated and signed this 24th day of October, 1991

BHP-UTAH INTERNATIONAL EXPLORATION INC.

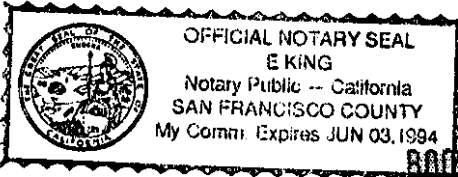
By: W. Kirk Williams  
W. Kirk Williams  
Agent for BHP-Utah International Exploration Inc.

STATE OF CALIFORNIA )  
  ) ss  
CITY AND COUNTY OF )  
SAN FRANCISCO      )

Subscribed and sworn to before me this 24th day of October, 1991, by W. Kirk Williams.

E. King  
Notary Public

My commission Expires:  
June 03, 1994



BOOK 227 PAGE 582

September 23, 1991



To Whom It May Concern:

This detailed report is filed in compliance with the requirements of Title 43 CFR 3833, for the following lode claims situated in Eureka County, Nevada:

(See attached listing of claims)

The assessment work consists of: Geophysical surveys, a geochemical soil survey and geological field evaluation, and rock chip sampling program. The geophysical survey consisted of I. P. Resistivity and VLF. The geophysical surveys were managed by Craig Beasley of BHP-Utah International. Craig Beasley has a Ph.D. in Geophysics and several years of experience in mineral exploration. D. L. Merrick and G. D. Minnick of FLG, Inc., P. O. Box 21542, Salt Lake City, Utah, managed the soil program. Mr. Merrick and Mr. Minnick have over 20 years of combined total exploration experience.

Geochemical analysis was performed by: Geochemical Services, Inc., 1490 Kleppe Lane, Sparks, Nevada 89431, which employs a professional staff with many years of experience in geochemical analysis.

The work has confirmed the existence of an exploration target on the property. These findings, coupled with geologic mapping on the subject property, indicate that geologic factors similar to other known mineralized properties in the region exist within the boundaries of the mining claims. The value of the work performed was in excess of \$13,000.00 and was performed between August 1, 1991 and August 31, 1991.

Future exploration and development work is under consideration for this property. All technical work and results are in the possession and are considered to be the exclusive property of BHP-Utah International Inc., 550 California Street, San Francisco, California 94104.

Sincerely,

*John P. Schloderer*  
John P. Schloderer  
Senior Geologist

JPS/lah

Attachments

BOOK 227 PAGES 83

EXHIBIT "A"  
TSH AND TWIN LODE CLAIMS  
EUREKA COUNTY, NEVADA

<u>CLAIM NAME</u>	<u>BLM SERIAL NO.</u>	<u>BOOK</u>	<u>COUNTY</u>	<u>PAGE</u>
TSH 1	NMC564545	200		040
TSH 2	NMC564546	200		041
TSH 3	NMC564547	200		042
TSH 4	NMC564548	200		043
TSH 5	NMC564549	200		044
TSH 6	NMC564550	200		045
TSH 7	NMC564551	200		046
TSH 8	NMC564552	200		047
TSH 9	NMC564553	200		048
TSH 10	NMC564554	200		049
TSH 11	NMC564555	200		050
TSH 12	NMC564556	200		051
TSH 13	NMC564557	200		052
TSH 14	NMC564558	200		053
TSH 15	NMC564559	200		054
TSH 16	NMC564560	200		055
TSH 17	NMC564561	200		056
TSH 18	NMC564562	200		057
TSH 19	NMC564563	200		058
TSH 20	NMC564564	200		059
TSH 21	NMC564565	200		060
TSH 22	NMC564566	200		061
TSH 23	NMC564567	200		062
TSH 24	NMC564568	200		063
TSH 25	NMC564569	200		064
TSH 26	NMC564570	200		065
TSH 27	NMC564571	200		066
TSH 28	NMC564572	200		067
TSH 29	NMC564573	200		068
TSH 30	NMC564574	200		069
TSH 31	NMC564575	200		070
TSH 32	NMC564576	200		071
TSH 33	NMC564577	200		072
TSH 34	NMC564578	200		073
TSH 35	NMC564579	200		074
TSH 36	NMC564580	200		075
TSH 37	NMC564581	200		076
TSH 38	NMC564582	200		077
TSH 39	NMC564583	200		078
TSH 40	NMC564584	200		079
TSH 41	NMC564585	200		080
TSH 42	NMC564586	200		081
TSH 43	NMC564587	200		082

BOOK 227 PAGE 584

Exhibit A  
Page 2

<u>CLAIM NAME</u>	<u>BLM SERIAL NO.</u>	<u>BOOK</u>	<u>COUNTY</u>	<u>PAGE</u>
TSH 44	NMC564588	200		083
TSH 45	NMC564589	200		084
TSH 46	NMC564590	200		085
TSH 47	NMC564591	200		086
TSH 48	NMC564592	200		087
TSH 49	NMC564593	200		088
TSH 50	NMC564594	200		089
TSH 51	NMC564595	200		090
TSH 52	NMC564596	200		091
TSH 53	NMC564597	200		092
TSH 54	NMC564598	200		093
TSH 55	NMC564599	200		094
TSH 56	NMC564600	200		095
TSH 57	NMC564601	200		096
TSH 58	NMC564602	200		097
TSH 60	NMC564603	200		098
TSH 62	NMC564604	200		099
TWIN 7	NMC564605	200		100
TWIN 8	NMC564606	200		101
TWIN 9	NMC564607	200		102
TWIN 10	NMC564608	200		103
TWIN 11	NMC564609	200		104
TWIN 12	NMC564610	200		105
TWIN 13	NMC564611	200		106
TWIN 14	NMC564612	200		107
TWIN 15	NMC564613	200		108
TWIN 16	NMC564614	200		109
TWIN 17	NMC564615	200		110
TWIN 18	NMC564616	200		111
TWIN 19	NMC564617	200		112
TWIN 20	NMC564618	200		113
TWIN 21	NMC564619	200		114
TWIN 22	NMC564620	200		115
TWIN 23	NMC564621	200		116
TWIN 24	NMC564622	200		117
TWIN 25	NMC564623	200		118
TWIN 26	NMC564624	200		119
TWIN 27	NMC564625	200		120
TWIN 28	NMC564626	200		121
TWIN 33	NMC564627	200		122
TWIN 34	NMC564628	200		123
TWIN 35	NMC564629	200		124
TWIN 36	NMC564630	200		125

BOOK 227 PAGE 585

<u>CLAIM NAME</u>	<u>BLM SERIAL NO.</u>	<u>BOOK</u>	<u>COUNTY</u>	<u>PAGE</u>
TWIN 37	NMC564631	200		126
TWIN 38	NMC564632	200		127
TWIN 39	NMC564633	200		128
TWIN 40	NMC564634	200		129
TWIN 41	NMC564635	200		130
TWIN 42	NMC564636	200		131
TWIN 43	NMC564637	200		132
TWIN 44	NMC564638	200		133
TWIN 45	NMC564639	200		134
TWIN 46	NMC564640	200		135
TWIN 47	NMC564641	200		136
TWIN 48	NMC564642	200		137
TWIN 49	NMC564643	200		138
TWIN 50	NMC564644	200		139
TWIN 51	NMC564645	200		140
TWIN 52	NMC564646	200		141
TWIN 53	NMC564647	200		142
TWIN 54	NMC564648	200		143
TWIN 55	NMC564649	200		144
TWIN 56	NMC564650	200		145
TWIN 61	NMC564651	200		146
TWIN 62	NMC564652	200		147
TWIN 63	NMC564653	200		148
TWIN 64	NMC564654	200		149
TWIN 65	NMC564655	200		150
TWIN 66	NMC564656	200		151
TWIN 67	NMC564657	200		152
TWIN 68	NMC564658	200		153
TWIN 69	NMC564659	200		154
TWIN 70	NMC564660	200		155
TWIN 71	NMC564661	200		156
TWIN 72	NMC564662	200		157
TWIN 73	NMC564663	200		158
TWIN 74	NMC564664	200		159
TWIN 75	NMC564665	200		160
TWIN 76	NMC564666	200		161
TWIN 77	NMC564667	200		162
TWIN 78	NMC564668	200		163
TWIN 79	NMC564669	200		164
TWIN 80	NMC564670	200		165
TWIN 81	NMC564671	200		166
TWIN 82	NMC564672	200		167
TWIN 83	NMC564673	200		168
TWIN 84	NMC564674	200		169

Explanation:  
Both geophysical and  
geochemical surveys  
were done at Twin  
Springs Hills, as  
drawn on map.  
Seologic evaluation  
of 1990 survey was  
done on entire claim  
block.

— Magnetics, VLF,  
Horizontal Loop, E. M.

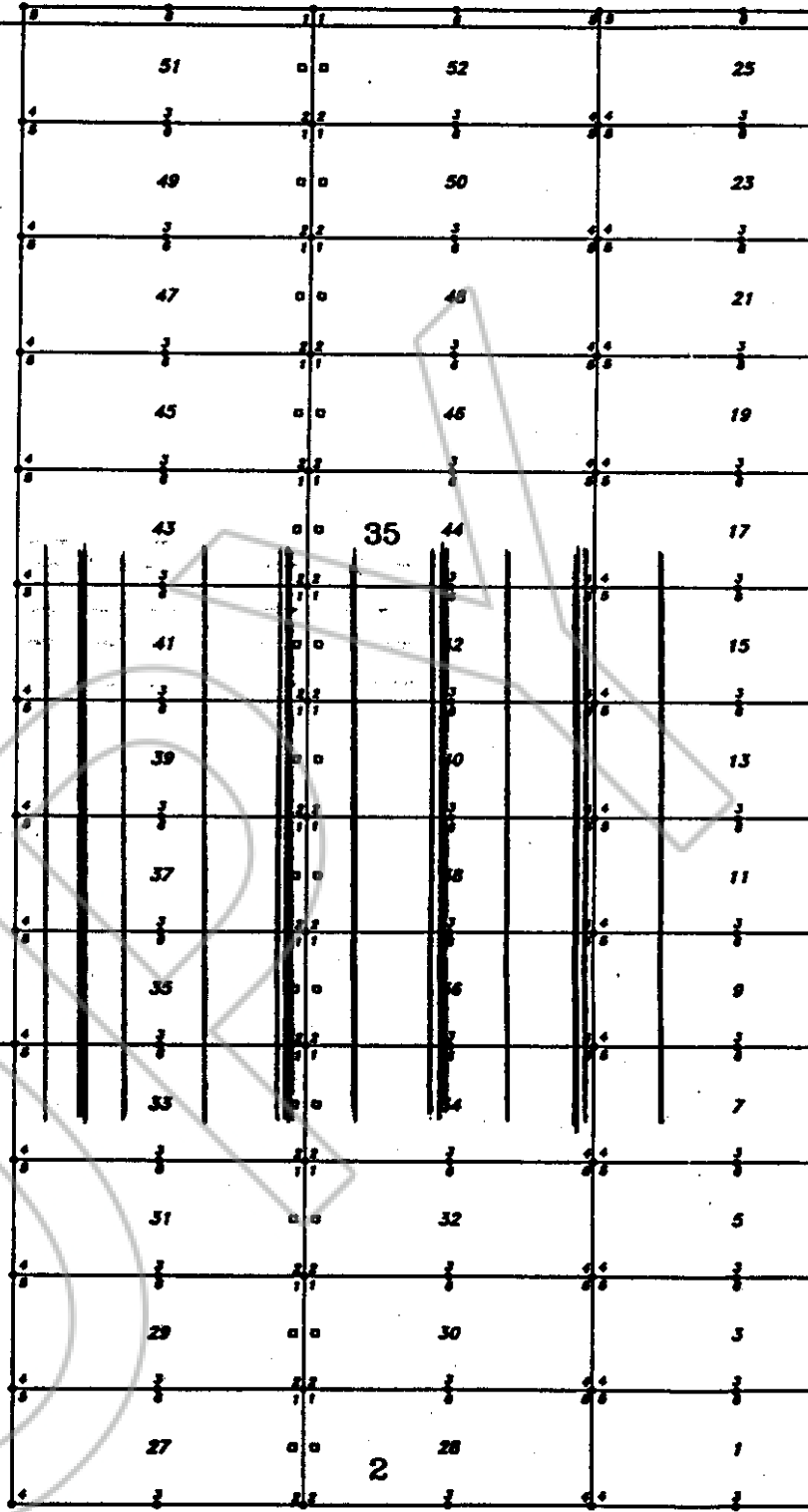
— I. P.

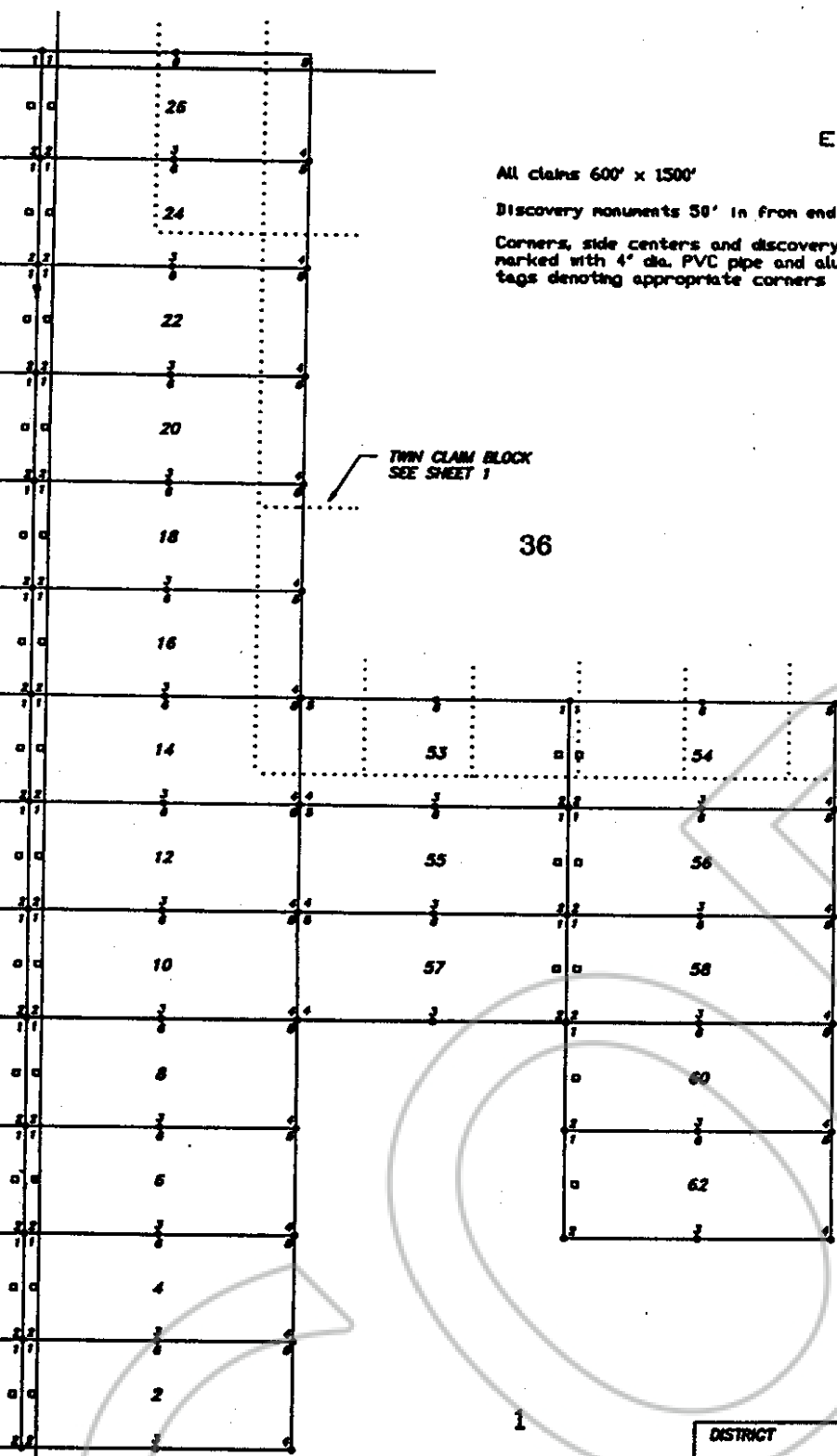
••••• Soil Samples

*D. Merrick* 10/8/91

T  
19  
N

T  
18  
N





**EXPLANATION**

All claims 600' x 1500'

Discovery monuments 50' in from end centers

Corners, side centers and discovery monuments marked with 4" dia. PVC pipe and aluminum tags denoting appropriate corners

**CLAIMS**

**DATE LOCATED**

TSH 1 thru 58 - May 24, 1989  
 TSH 60 thru 62 - May 24, 1989

These claims are located by Freelance Geology Inc.  
 An agent for BHP-Utah International Exploration Inc.

TWIN CLAIM BLOCK  
 SEE SHEET 1

36

N

BOOK 227 PAGE 581

OFFICIAL RECORDS  
 RECORDED AT THE REQUEST OF

*BHP-Utah International Inc.*

'91 OCT 29 P3:14

*Inc*

EUREKA COUNTY, NEVADA  
 M.N. REBALEATI, RECORDER  
 FILE NO. FEE \$ 227.50

138400

DISTRICT	BHP-UTAH INTERNATIONAL EXPLORATION INC.	
COUNTY	EUREKA	TITLE
STATE	NEVADA	TSH CLAIMS
SHEET	2	PROJECT
SCALE	1"=1000'	TWIN SPRINGS HILLS
	DATA BY	DRAWN BY
	FLG Inc.	R. Strong

BOOK 227 PAGE 588