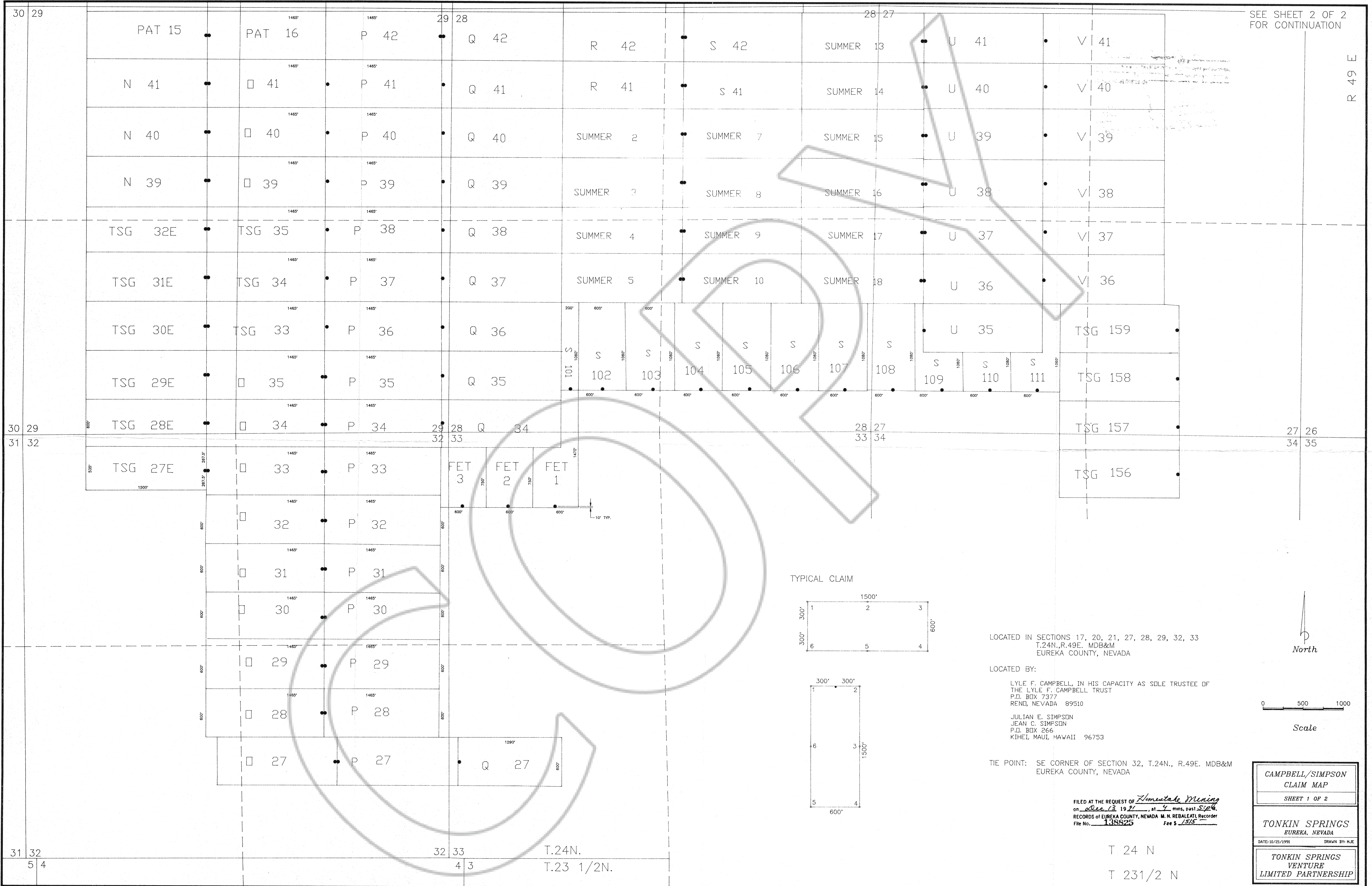


SEE SHEET 2 OF 2 FOR CONTINUATION



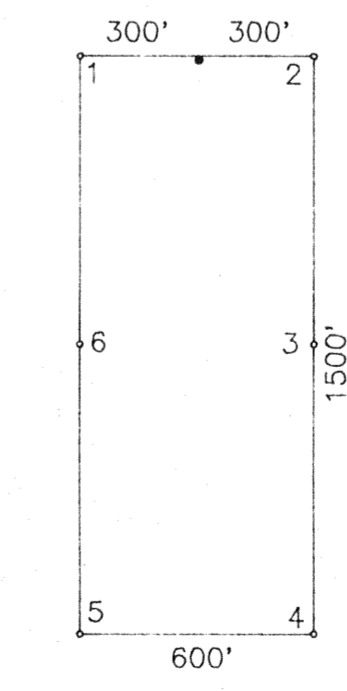
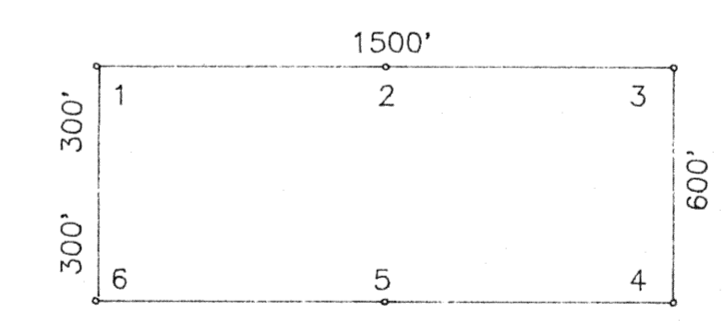
30 29

30 29
31 32

31 32
5 4

32 33
4 3
T.24N.
T.23 1/2N.

TYPICAL CLAIM



LOCATED IN SECTIONS 17, 20, 21, 27, 28, 29, 32, 33
T.24N., R.49E. MDB&M
EUREKA COUNTY, NEVADA

LOCATED BY:
LYLE F. CAMPBELL, IN HIS CAPACITY AS SOLE TRUSTEE OF
THE LYLE F. CAMPBELL TRUST
P.O. BOX 7377
RENO, NEVADA 89510
JULIAN E. SIMPSON
JEAN C. SIMPSON
P.O. BOX 266
KIHEI, MAUI, HAWAII 96753

TIE POINT: SE CORNER OF SECTION 32, T.24N., R.49E. MDB&M
EUREKA COUNTY, NEVADA

FILED AT THE REQUEST OF *Homestead Mining*
on *Dec 13 1991*, at *9* mins, past *5:04*
RECORDS OF EUREKA COUNTY, NEVADA M. N. REBALEATI, Recorder
File No. *138825* Fee \$ *1515*

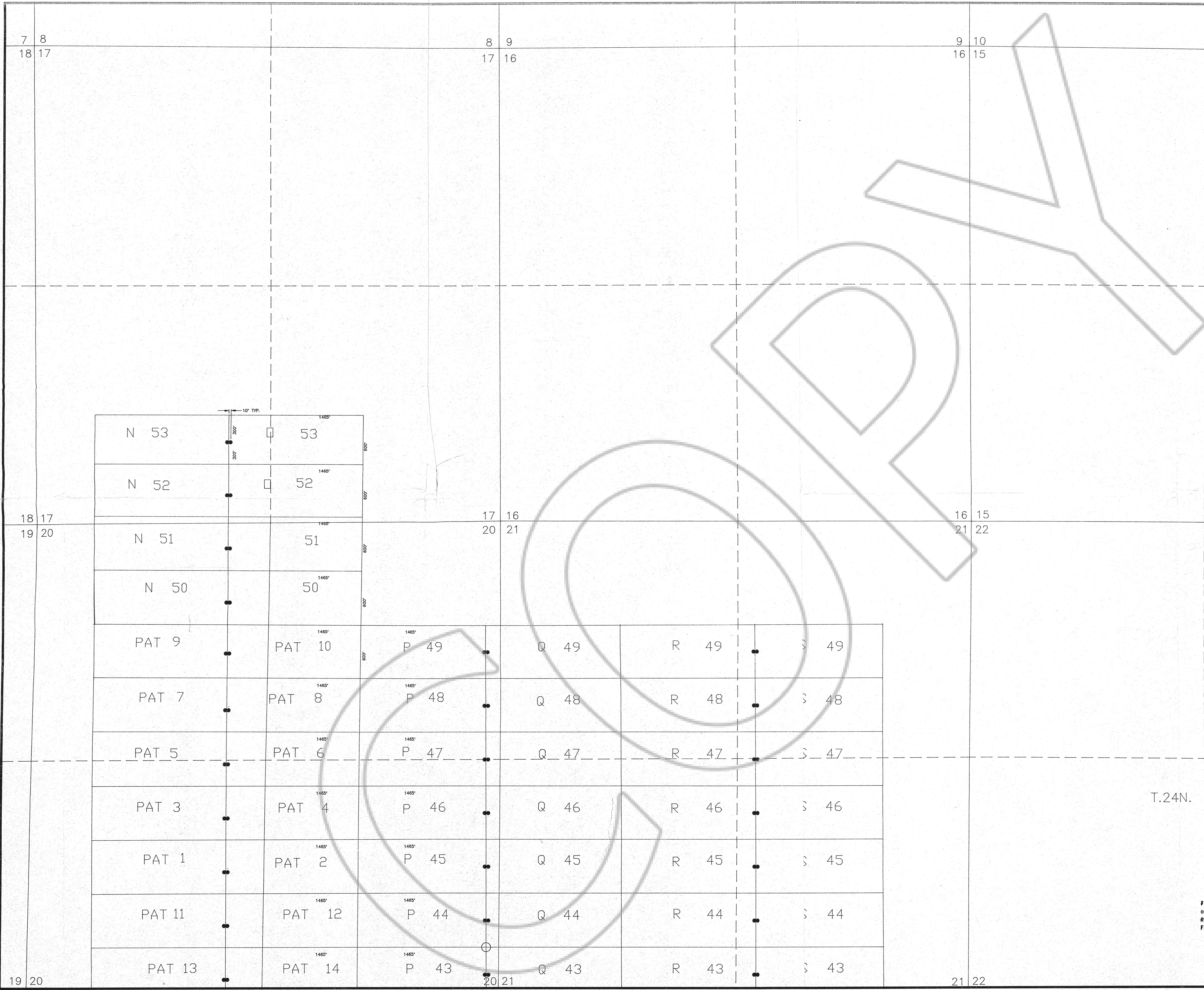
CAMPBELL/SIMPSON
CLAIM MAP
SHEET 1 OF 2

TONKIN SPRINGS
EUREKA, NEVADA

DATE: 10/21/1991 DRAWN BY: HJE

TONKIN SPRINGS
VENTURE
LIMITED PARTNERSHIP

T 24 N
T 231/2 N

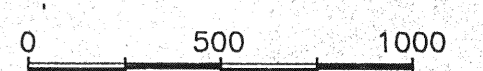
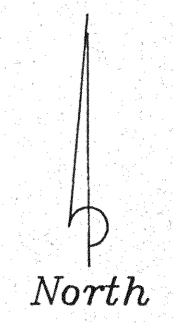
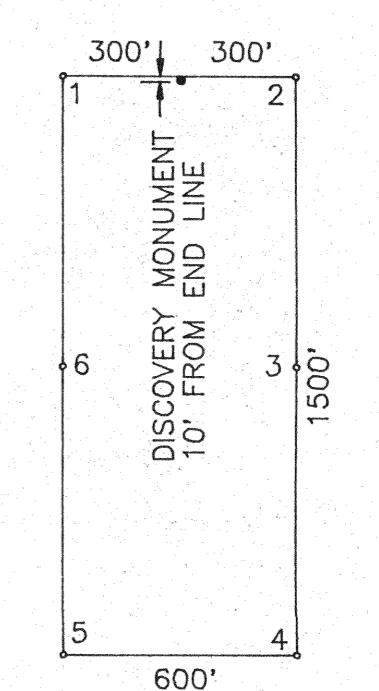
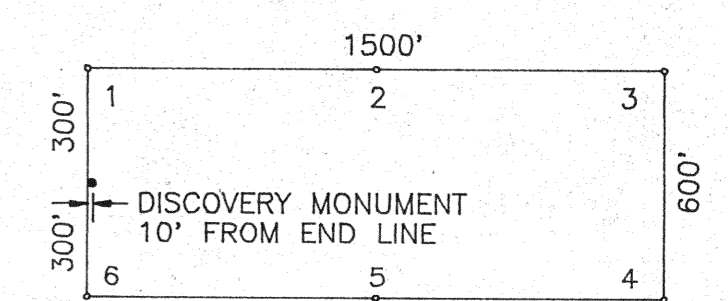


LOCATED IN SECTIONS 17, 20, 21, 27, 28, 29, 32, 33
 T.24N., R.49E.
 EUREKA COUNTY, NEVADA
 LOCATED IN SECTIONS 17, 20, 21, 27, 28, 29, 32, 33
 T.24N., R.49E.
 EUREKA COUNTY, NEVADA

LYLE F. CAMPBELL, IN HIS CAPACITY AS SOLE TRUSTEE OF
 THE LYLE F. CAMPBELL TRUST
 P.O. BOX 7377
 RENO, NEVADA 89510
 JULIAN E. SIMPSON
 JEAN C. SIMPSON
 P.O. BOX 266
 KIHUI, MAUI, HAWAII 96753

TIE POINT: SE CORNER OF SECTION 32, T.24N., R.49E. MDB&M
 EUREKA COUNTY, NEVADA

TYPICAL CLAIM



Scale

T.24N.

R-49-E

FILED AT THE REQUEST OF *Lonestake Mining*
 on *Dec 12* 19 *91*, at *4* mins, past *5* P.M.
 RECORDS OF EUREKA COUNTY, NEVADA M. H. REBEAULT, Recorder
 File No. *138825* Fee \$ *750*

SEE SHEET 1 OF 2
 FOR CONTINUATION

CAMP MAP CLAIMS CLAIM MAP	
SHEET 2 OF 2	
TONKIN SPRINGS EUREKA, NEVADA	
DATE: 10/21/1991	DRAWN BY: H.E.
TONKIN SPRINGS VENTURE LIMITED PARTNERSHIP	