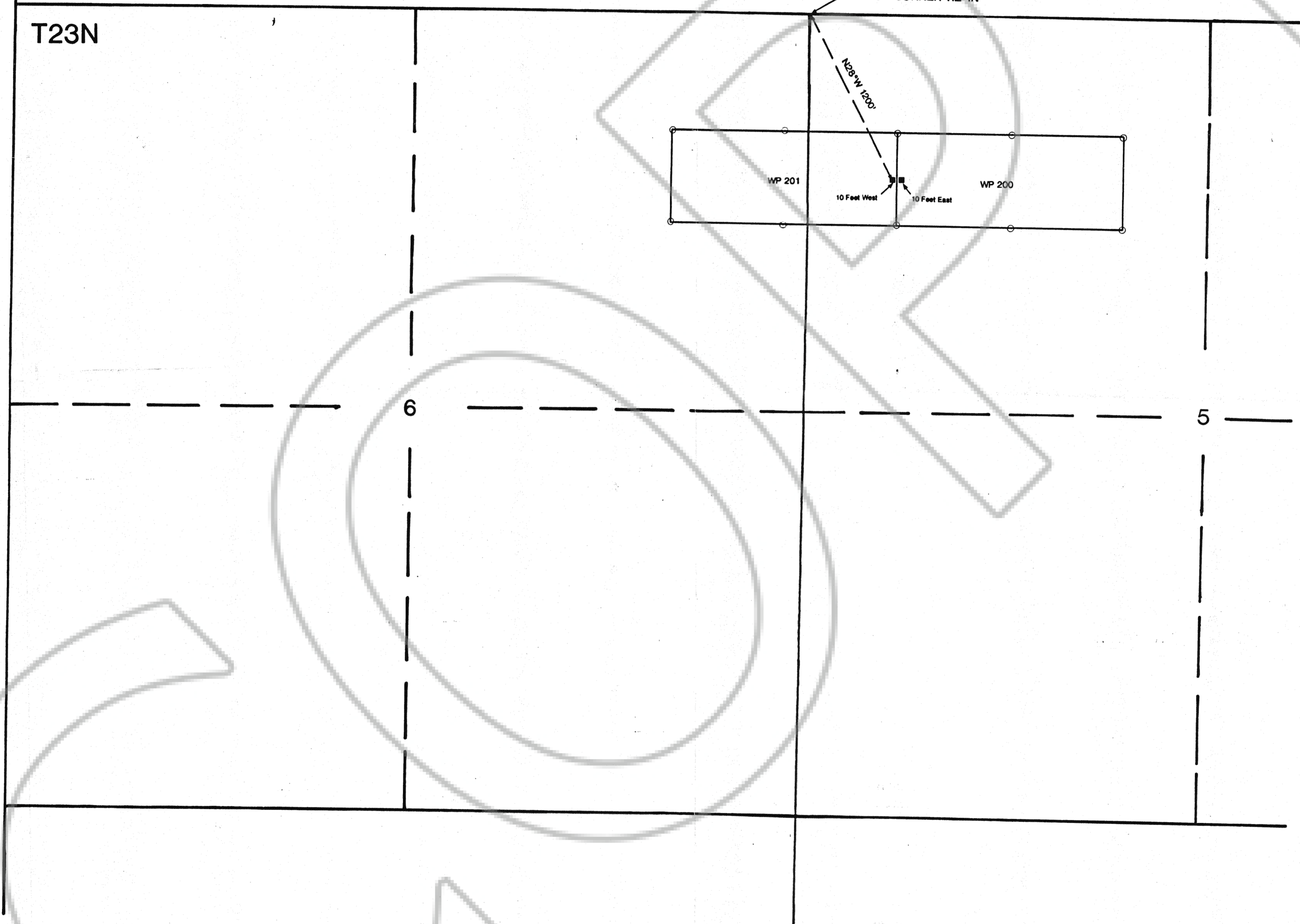


R49E
R50E
T23 1/2N
T23N

MAP OF
WP 200 & WP 201 CLAIMS
T23N, R50E (unsurveyed)
MOUNT Diablo BASE AND MERIDIAN
EUREKA COUNTY, NEVADA

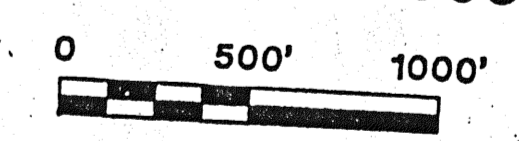


THERE ARE 7 POSTS OF DURABLE PLASTIC PIPE AT LEAST 3" IN DIAMETER BY 4.5' LONG SET IN THE GROUND, ONE POST FOR THE DISCOVERY MONUMENT, ONE FOR EACH OF THE FOUR CORNERS AND ONE AT THE CENTER OF EACH SIDELINE AS PRESCRIBED BY N.R.S. 517.030.
ALL CORNERS AND SIDECENTERS ARE IDENTIFIED 2, 3, 4, 5, 6 AND 1 IN A CLOCKWISE DIRECTION FROM THE DISCOVERY MONUMENT, 10' FROM THE END LINE.

CLAIM	DATE	LOCATOR
WP 200, WP 201	11-1-91	ASARCO Incorporated 510 East Plumb Lane Reno, Nevada 89502

- LOCATION MONUMENT
- CORNER OR SIDE CENTER

ASARCO Incorporated
510 EAST PLUMB LANE
RENO, NEVADA 89502



O. J. BROWNE 12/18/91

FILED AT THE REQUEST OF ASARCO Incorporated
on Dec 23 19 91, at 2:35 mins, past 4:00 P.M.
RECORDS OF EUREKA COUNTY, NEVADA M. N. REBALEATI, Recorder
File No. 19135 Fee \$ 20