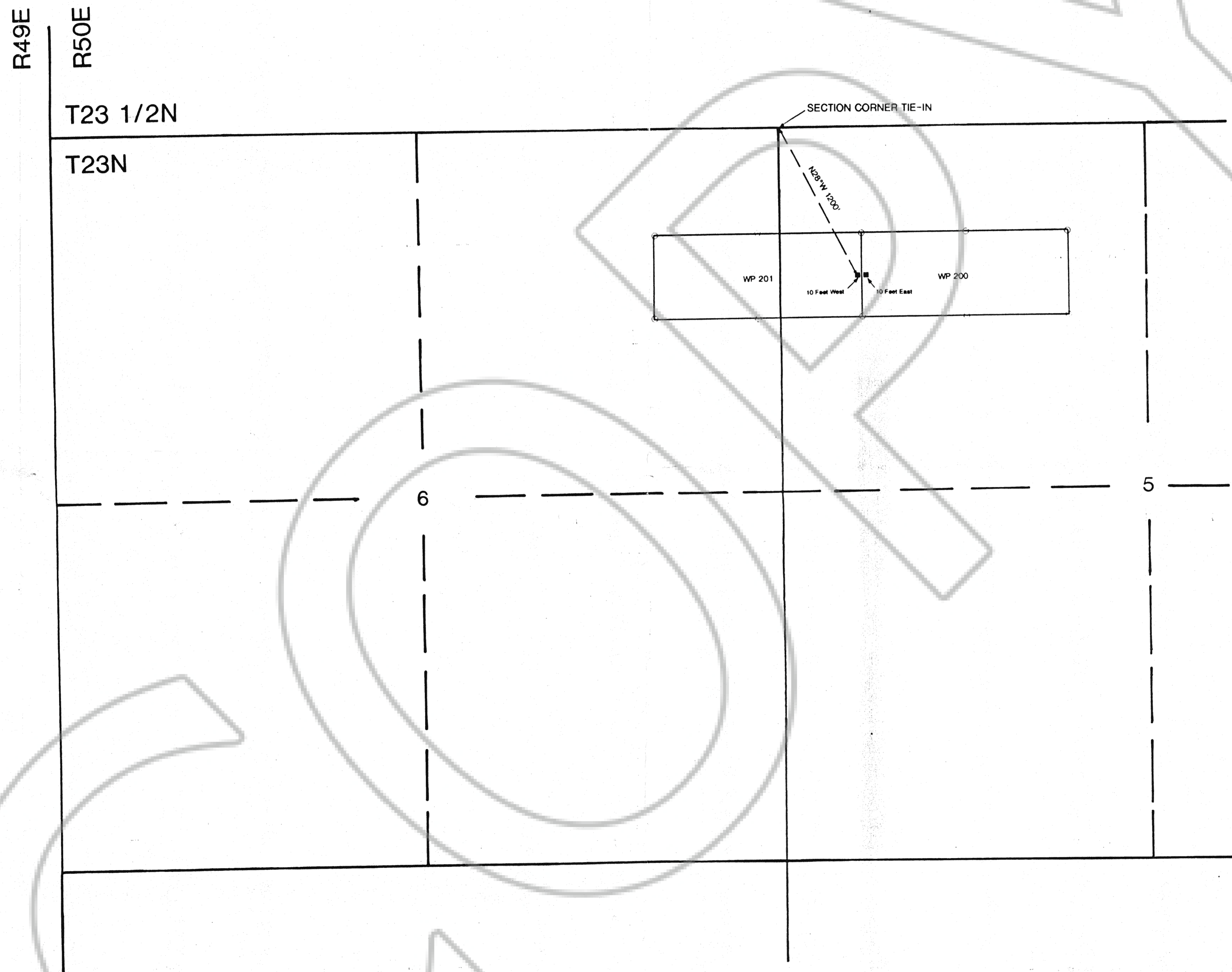
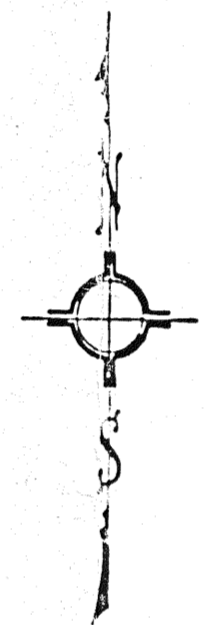


MAP OF  
 WP 200 & WP 201 CLAIMS  
 T23N, R50E (unsurveyed)  
 MOUNT DIABLO BASE AND MERIDIAN  
 EUREKA COUNTY, NEVADA



THERE ARE 7 POSTS OF DURABLE PLASTIC PIPE AT LEAST 3" IN DIAMETER BY 4.5' LONG SET 1" IN THE GROUND, ONE POST FOR THE DISCOVERY MONUMENT, ONE FOR EACH OF THE FOUR CORNERS AND ONE AT THE CENTER OF EACH SIDELINE AS PRESCRIBED BY N.R.S. 517.030.

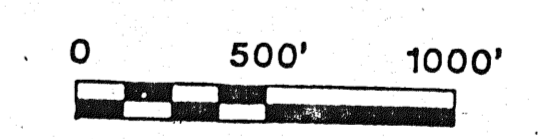
ALL CORNERS AND SIDECENTERS ARE IDENTIFIED 2, 3, 4, 5, 6 AND 1 IN A CLOCKWISE DIRECTION FROM THE DISCOVERY MONUMENT, 10' FROM THE END LINE.



CLAIM	DATE	LOCATOR
WP 200, WP 201	11-11-91	ASARCO Incorporated 510 East Plumb Lane Reno, Nevada 89502

- LOCATION MONUMENT
- CORNER OR SIDE CENTER

**ASARCO Incorporated**  
 510 EAST PLUMB LANE  
 RENO, NEVADA 89502



O. J. BROWNE 12/18/91

FILED AT THE REQUEST OF *Asarco Incorp*  
 on *Dec 23* 19 *91* at *45* *Plumb Lane*  
 REC'D OF EUREKA COUNTY, NEVADA AT 11:20 AM 12/23/91  
 1-9938