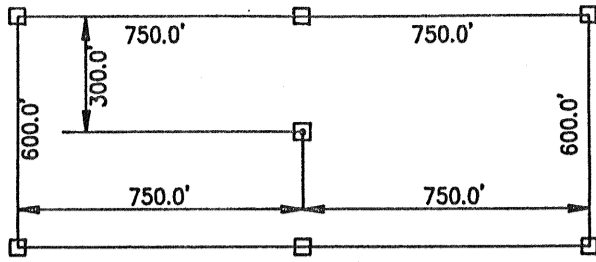


18 | 17
19 | 20

N 19° W
3,500'



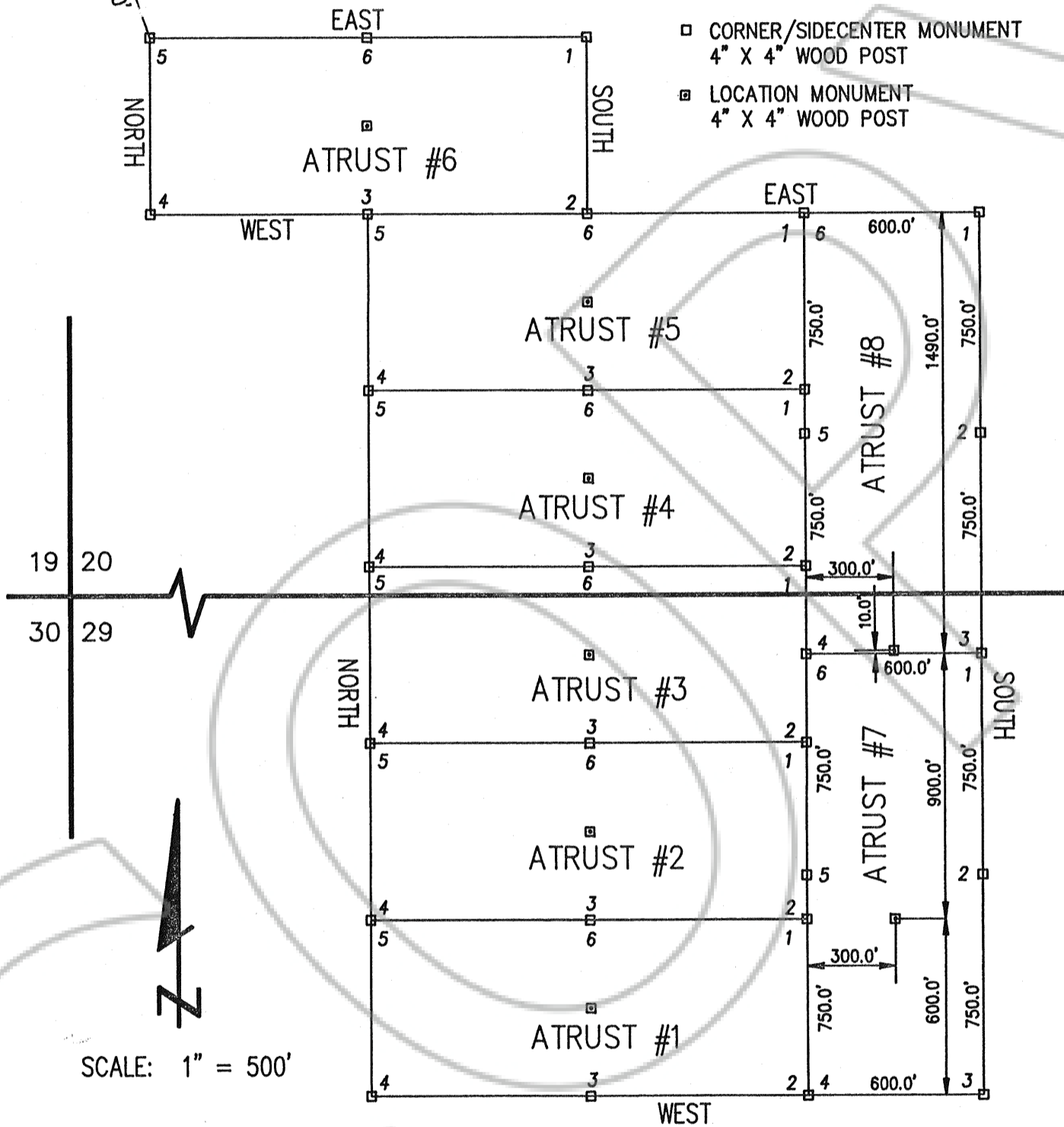
TYPICAL DIMENSIONING FOR ATRUST #1-#6

LOCATION DATES

November 26, 1991
ATRUST #1-4, #7
November 27, 1991
ATRUST #5-6, #8

LEGEND

- CORNER/SIDECENTER MONUMENT
4" X 4" WOOD POST
- ▣ LOCATION MONUMENT
4" X 4" WOOD POST



SCALE: 1" = 500'

Locator: NEWMONT EXPLORATION LTD.
P.O. BOX 669
CARLIN, NEVADA
89822

NEWMONT EXPLORATION LTD.

P.O. Box 669
Carlin, Nevada 89822

Telephone (702) 778-0088
Fax (702) 778-4784

FILED AT THE REQUEST OF *Newmont Explor. Limited*
on *Feb 13* 19 *92*, at *54* mins, past *10 A.M.*
RECORDS of EUREKA COUNTY, NEVADA M. H. REBALLA, REC. CLERK
File No. **139846** Fee \$ *120*

MAP OF
ATRUST #1-#8 LODE CLAIMS
SECTIONS 20 & 29, T31N, R51E
EUREKA COUNTY, NEVADA