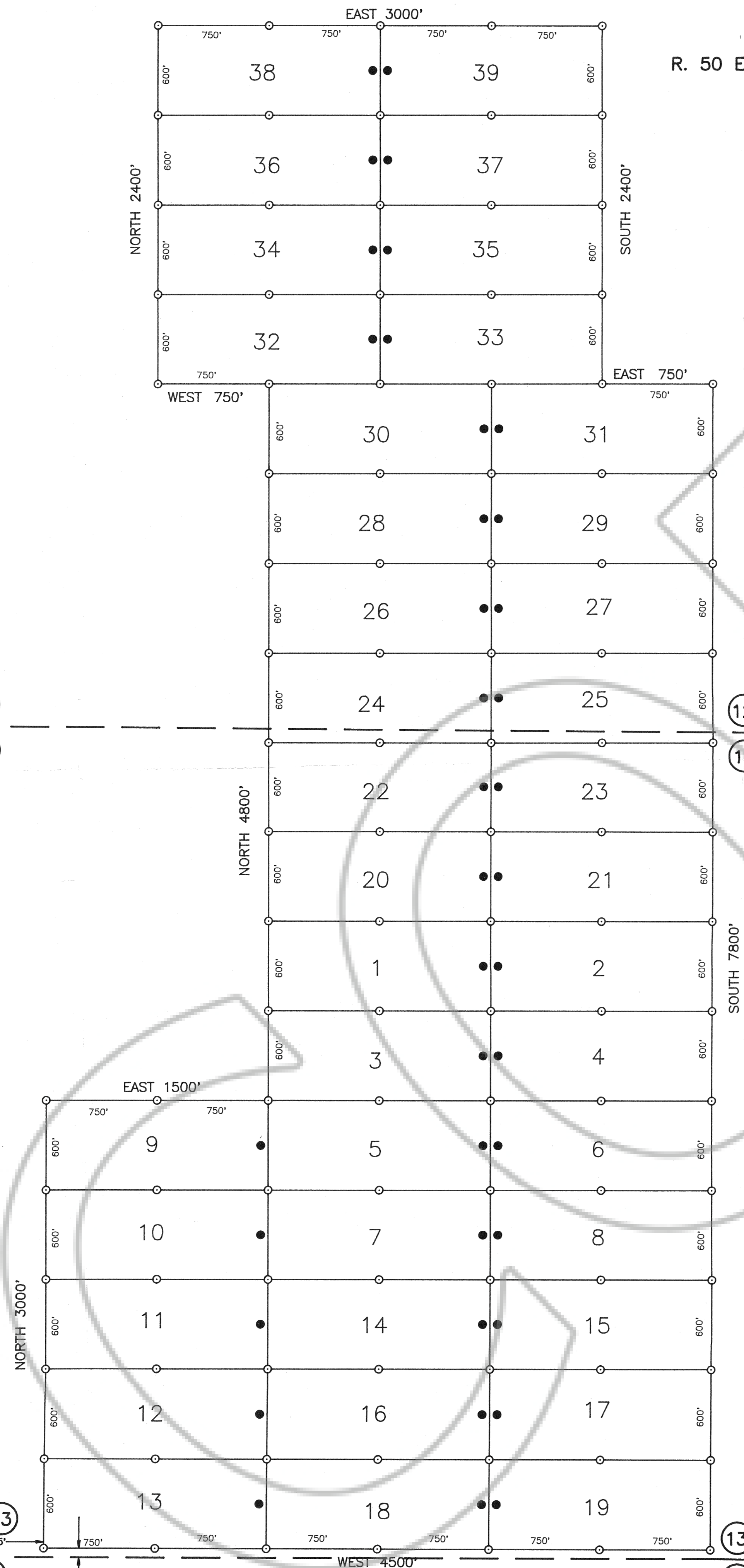


T. 22 N.

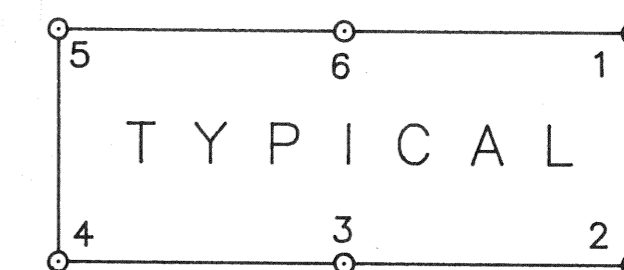
R. 50 E. R. 51 E.



NOTES
 ALL CLAIMS ARE 600' X 1500' UNLESS OTHERWISE SHOWN
 LOCATION MONUMENTS ARE 10' FROM END LINE OF CLAIM UNLESS OTHERWISE SHOWN.

LEGEND
 ● CAPPED DURABLE PLASTIC PIPE LOCATION MONUMENT
 ○ CAPPED DURABLE PLASTIC PIPE MONUMENT
 ○○ INDICATES SECTION CORNER, SECTION LINES ARE PROTRACTED

LOCATION DATES
 JANUARY 6, 1992 1-4
 JANUARY 10, 1992 5-10
 FEBRUARY 7, 1992 11-39



SCALE 1" = 500'

TIE: NORTHEAST CORNER,
 SECTION 23, T.22N., R.50E.,
 MT. DIABLO MERIDIAN

FILED AT THE REQUEST OF *ApeX Surveying, Inc.*
 on 2/27 1992, at 13 mins. past 11 AM.
 RECORDS OF EUREKA COUNTY, NEVADA M. N. REBALEATI, Recorder
 File No. 140002 Fee \$ 585.00

MAP OF THE
ES LODE MINING CLAIMS
 Eureka County, Nevada

T.22N., R.50 E.
 Located by Richard D. Inberg and Gregory McKnight French
 AGENTS FOR
ATLAS PRECIOUS METALS INC.
 370 17th Street, Suite 3150
 Denver, Colorado 80202
 FEBRUARY 10, 1992

APEX SURVEYING INC. RIVERTON, WYOMING