

T. 35 N.  
T. 34 N.

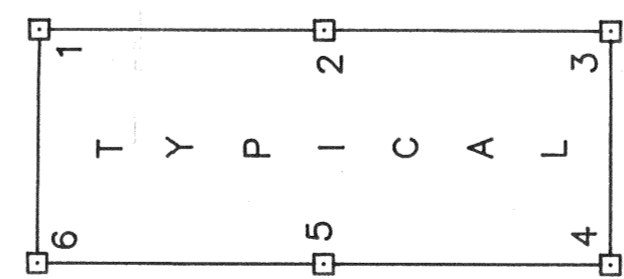
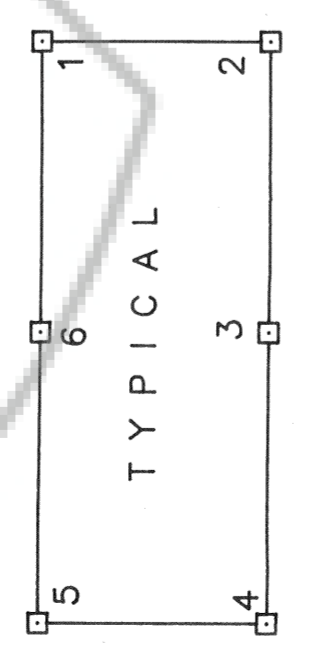
TIE: NORTHWEST CORNER,  
SECTION 6, T.34N., R.50E.,  
MT. DIABLO MERIDIAN

- LEGEND
- ☒ 3 1/2" X 3 1/2" X 4" WOOD POST LOCATION MONUMENT
  - 3 1/2" X 3 1/2" X 4" WOOD POST MONUMENT
  - ⊙ INDICATES SECTION CORNER

NOTES

ALL CLAIMS ARE 600' X 1500' UNLESS OTHERWISE SHOWN

LOCATION MONUMENTS ARE 10' FROM END LINE OF CLAIM UNLESS OTHERWISE SHOWN.



LOCATION DATES

JANUARY 20, 1992 1-38

JANUARY 21, 1992 39-56

FILED AT THE REQUEST OF *Newmont Exploration Limited*

on *April 23, 1992*

RECORDS OF EUREKA COUNTY, NEVADA M. N. REBEL

File No. **140625** Fee \$ **870**

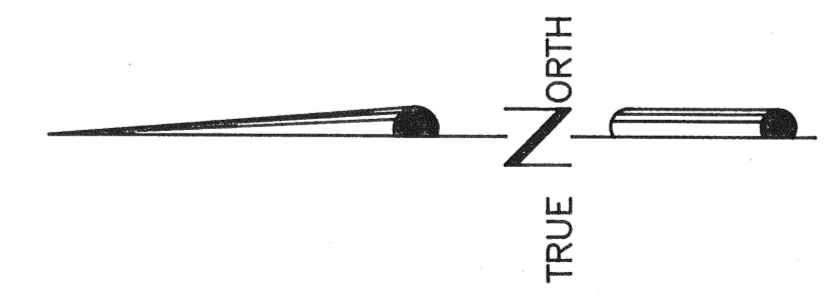
SHEET 1 OF 2 SHEETS

MAP OF THE  
**COT LODE MINING CLAIMS**  
Eureka County, Nevada

T.34N., R.50E.  
Located by Robert W. Schlichting  
AGENT FOR  
**NEWMONT EXPLORATION LIMITED**  
P.O. Box 669  
Carlin, Nevada 89822  
February 14, 1992 **140625**

**APEX SURVEYING INC. RIVERTON, WYOMING**

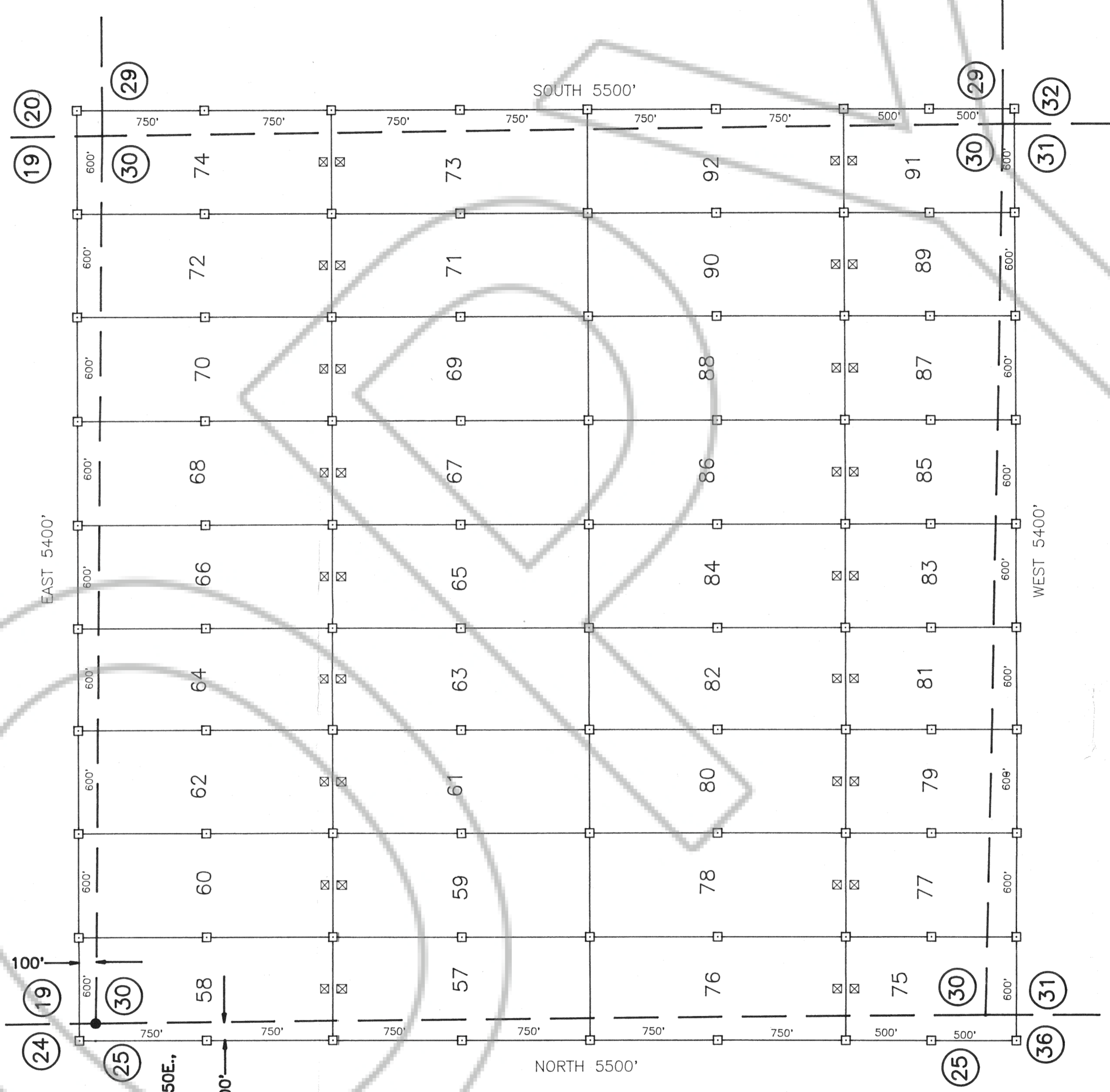
SCALE 1" = 500'



MATCH SHEET 1 OF 2 SHEETS

R. 49 E. R. 50 E.

T. 34 N.



TIE: NORTHWEST CORNER,  
SECTION 30, T.34N., R.50E.,  
MT. DIABLO MERIDIAN

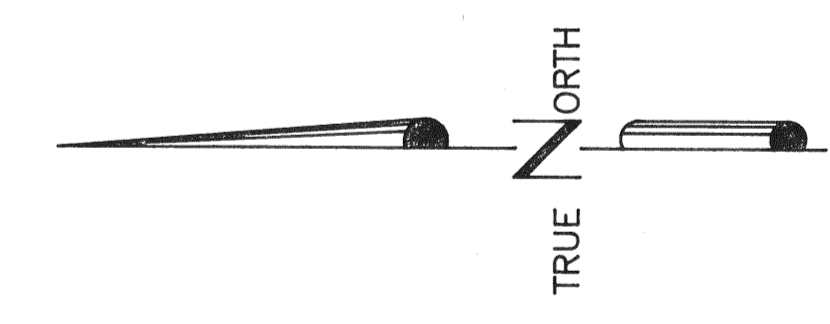
- LEGEND
- ☒ 3 1/2" X 3 1/2" X 4' WOOD POST LOCATION MONUMENT
  - ☐ 3 1/2" X 3 1/2" X 4' WOOD POST MONUMENT
  - ⊗ INDICATES SECTION CORNER

NOTES

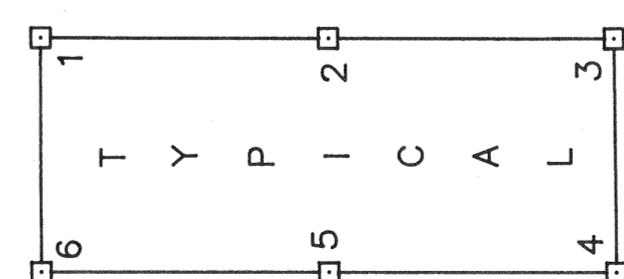
ALL CLAIMS ARE 600' X 1500' UNLESS OTHERWISE SHOWN

LOCATION MONUMENTS ARE 10' FROM END LINE OF CLAIM UNLESS OTHERWISE SHOWN.

LOCATION DATE: JANUARY 21, 1992 57-92



SCALE 1" = 500'



FILED AT THE REQUEST OF *Newmont Exploration Limited*  
on *April 8*, 19 *92*, at *4* mins, past *11A.M.*  
RECORDS OF EUREKA COUNTY, NEVADA - M. N. REBALEATI, Recorder  
File No. *140e25* Fee \$ *5.00*

SHEET 2 OF 2 SHEETS

MAP OF THE  
**COT LODGE MINING CLAIMS**  
Eureka County, Nevada

T.34N., R.50E.  
Located by Robert W. Schlichting  
AGENT FOR  
NEWMONT EXPLORATION LIMITED  
P.O. Box 669  
Carlin, Nevada 89822  
February 14, 1992

APEX SURVEYING INC. RIVERTON, WYOMING