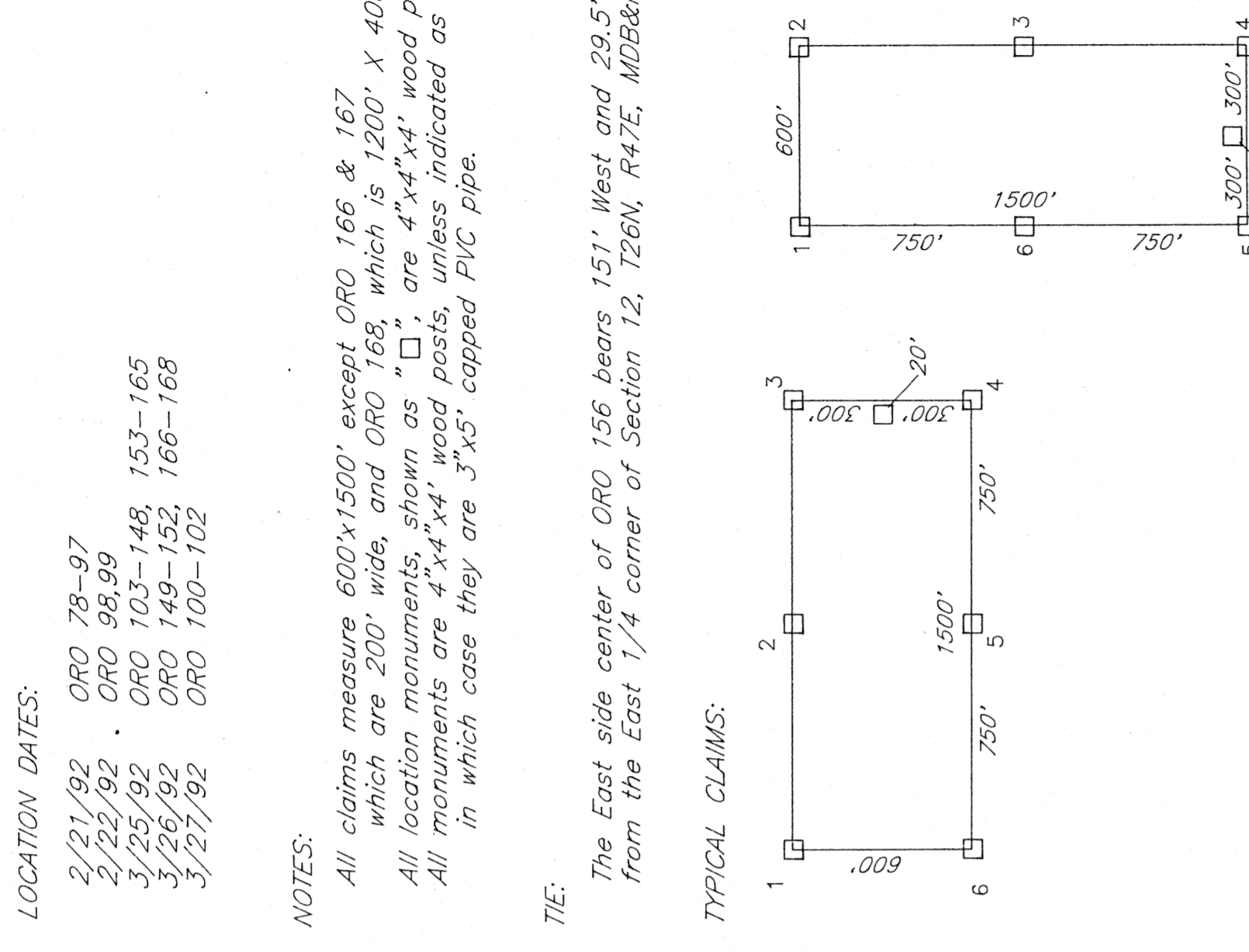
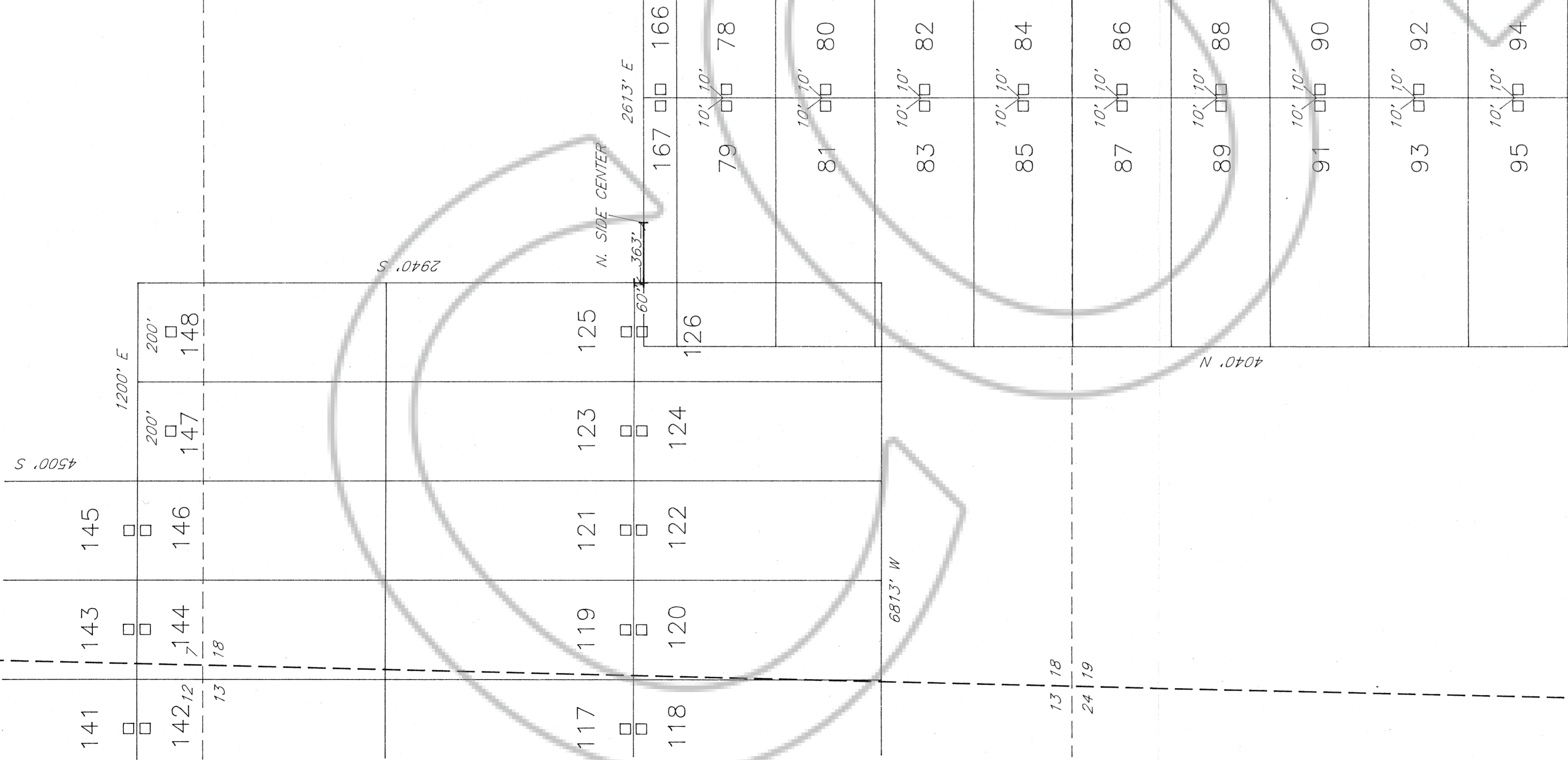
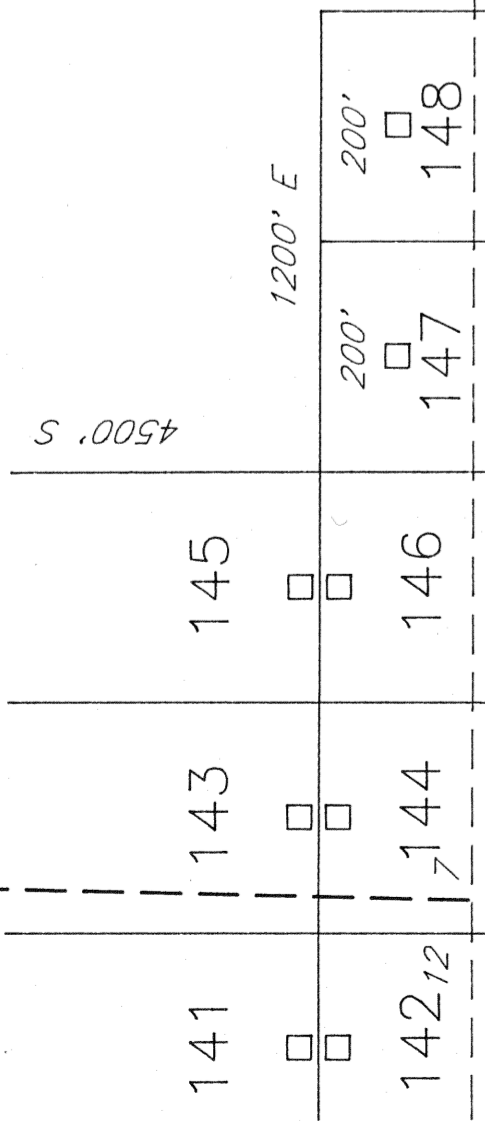


T26N

LOCATOR:

RIO ALGOM EXPLORATION INC.
245 E. Liberty St., Suite 200
Reno, Nevada 89501

LANDER CO. 7 8
EUREKA CO. 18 17



LOCATION DATES:
2/21/92 ORO 78-97
2/22/92 ORO 98,99
3/25/92 ORO 103-148, 153-165
3/26/92 ORO 149-152, 166-168
3/27/92 ORO 100-102

NOTES:
All claims measure 600'x1500' except ORO 166 & 167 which are 200' wide, and ORO 168, which is 1200' x 400'.
All location monuments, shown as "□", are 4"x4"x4' wood posts.
All monuments are 4"x4"x4' wood posts, unless indicated as "O", in which case they are 3"x5' capped PVC pipe.

TIE:
The East side center of ORO 156 bears 151° West and 29.5' North from the East 1/4 corner of Section 12, T26N, R47E, MDB&M.

TYPICAL CLAIMS:

13 18
24 19

19 20
18 17

EXISTING
ORO
CLAIMS

73
72
71
70
69
46
44
42
40
38
36
34

R47E
R48E

1500' W
1500' W
1500' W
1500' W
1500' W
1500' W
1500' W
1500' W

1200' N

10' 10'

10' 10'

10' 10'

10' 10'

10' 10'

10' 10'

10' 10'

24 19
25 30

1800' N

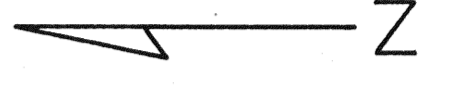
19, 20
30 29

10' 10'

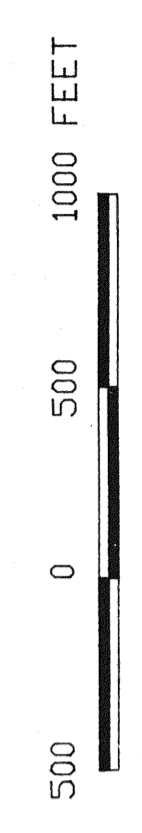
10' 10'

10' 10'

10' 10'



FILED AT THE REQUEST OF Rio Algom Exploration
on 04/01/92 at 3:33 p.m. in Book 39, P. 11
RECORDS OF EUREKA COUNTY, NEVADA. M.N. REPELLETT, Recorder
File No. 140745 Fee \$ 75.00



ORO (78-168)
LODE MINING CLAIMS

Sections 1, 12, 13 T26N R47E
Sections 7, 18-20, 29, 30 T26N R48E MDB&M
Lander and Eureka Counties, Nevada