

TIE: NORTHWEST CORNER,
SECTION 19, T.35N.,
R.52E., MT. DIABLO
MERIDIAN

(13) (18)
(24) (19)

9100'
SOUTH

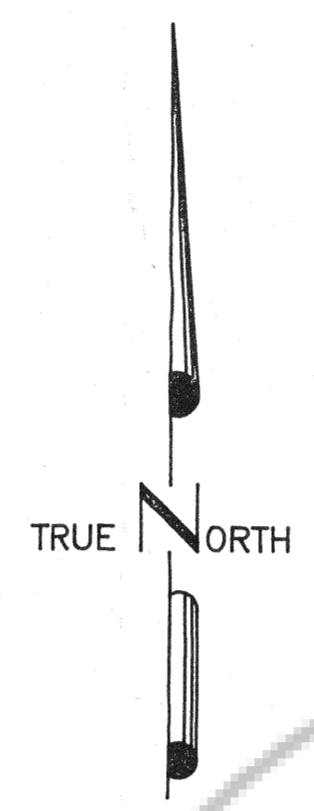
EAST 950' EAST 1200'

NORTH 3000'

NORTH 3900'



EUREKA COUNTY
ELKO COUNTY



SCALE 1" = 500'

NOTES
ALL CLAIMS ARE 600' X 1500' UNLESS OTHERWISE SHOWN
LOCATION MONUMENTS ARE 10' FROM END LINE OF CLAIM
UNLESS OTHERWISE SHOWN.

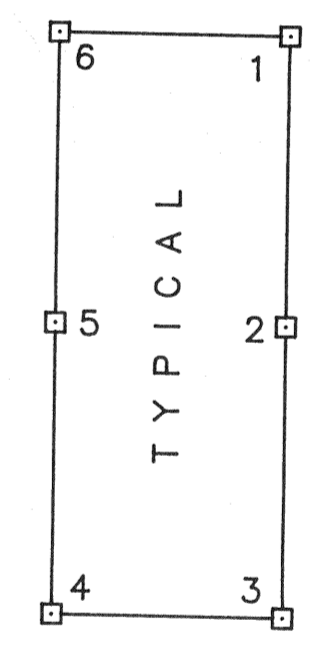
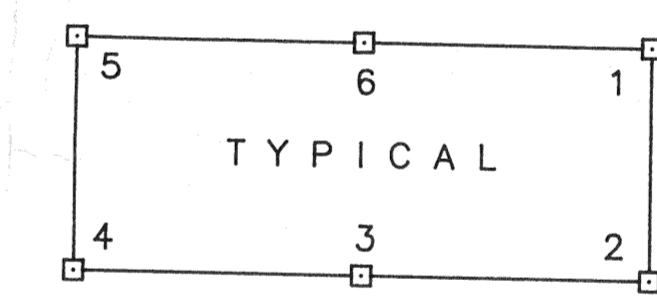
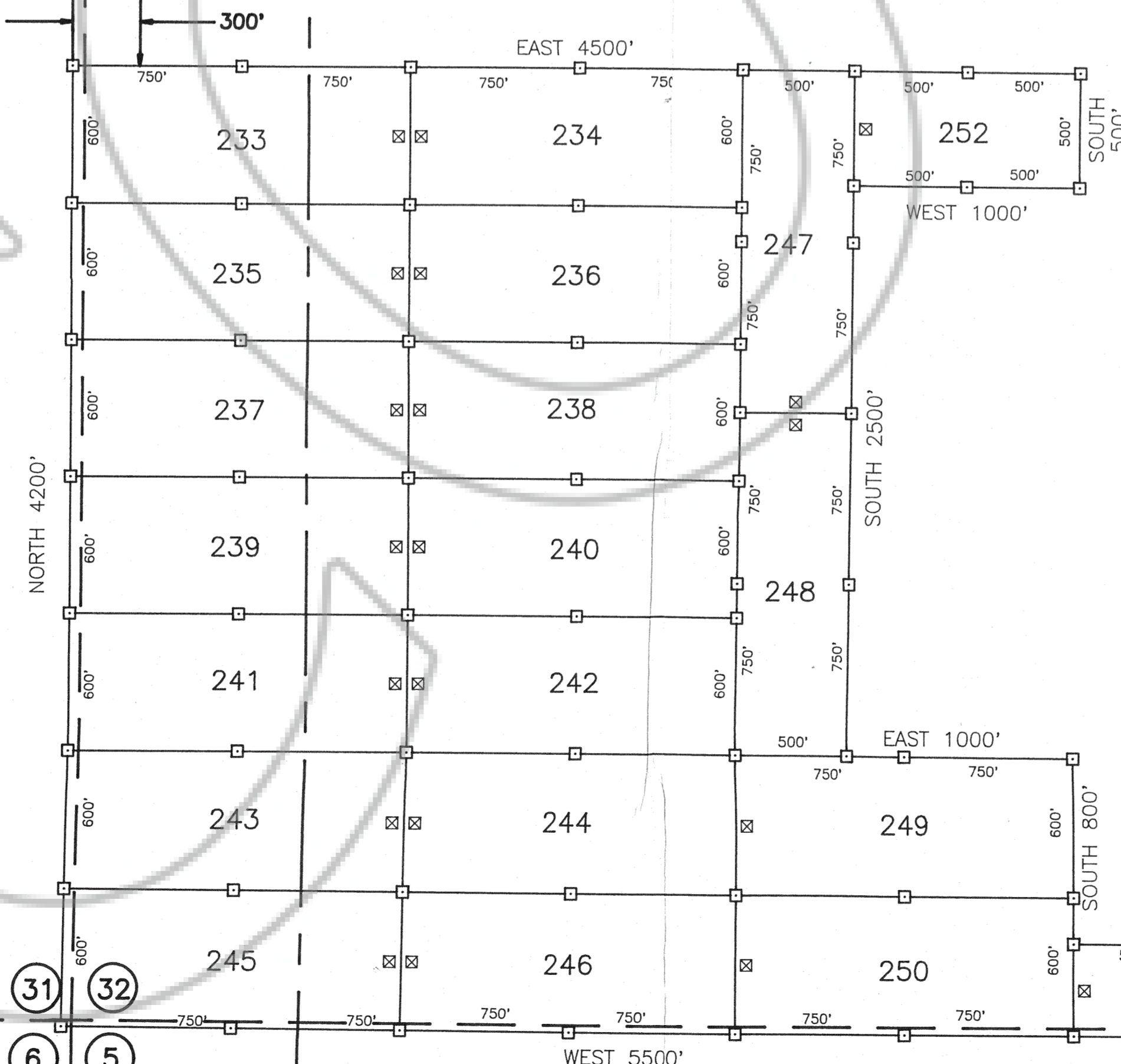
LEGEND

LOCATION DATES
 FEBRUARY 14, 1992 213-232
 FEBRUARY 17, 1992 233-251
 FEBRUARY 19, 1992 252

(25) (30)
(36) (31)

WEST 4200'

1150'



FILED AT THE REQUEST OF *Newmont Exploration Ltd*
 on *April 29, 1992*, at *02* mins. past *12* M.
 RECORDS OF EUREKA COUNTY, NEVADA M. N. REBALEATI, Recorder
 File No. **140789** Fee \$ *405.00*

MAP OF THE
WOL LODGE MINING CLAIMS
 Eureka & Elko Counties, Nevada

T.34N., R.52E. & T.35N., R.52E.
 Located by Robert W. Schlichting
 AGENT FOR
 NEWMONT EXPLORATION LIMITED

P.O. Box 669
 Carlin, Nevada 89822

March 3, 1992

APEX SURVEYING INC. RIVERTON, WYOMING

R.51E.
R.52E.

T.35N.
T.34N.

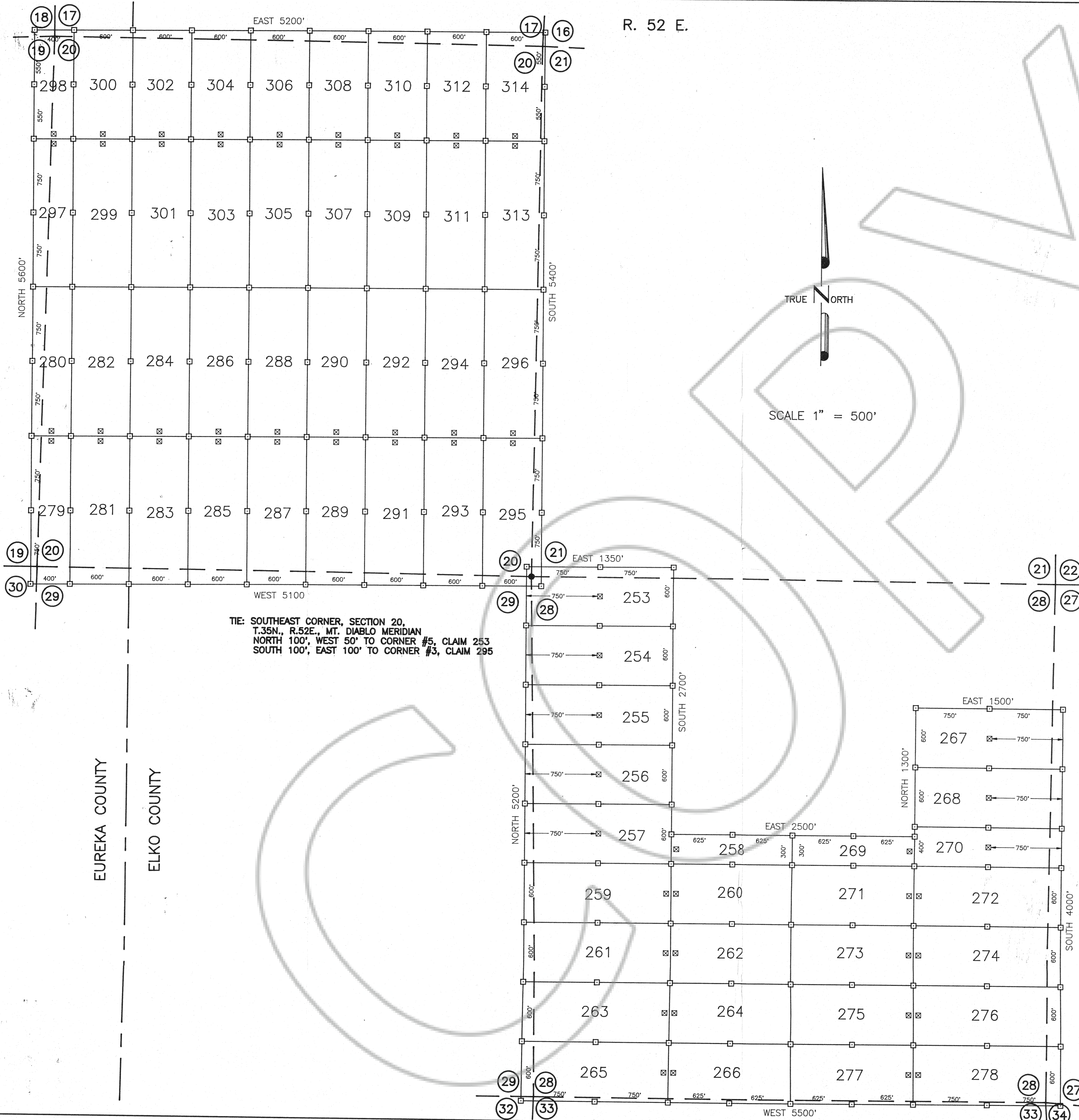
(36) (31)
(1) (6)

(29) (28)
(32) (33)

(31) (32) (33)
(6) (5) (5) (4)

T. 35 N.

R. 52 E.



TIE: SOUTHEAST CORNER, SECTION 20,
 T.35N., R.52E., MT. DIABLO MERIDIAN
 NORTH 100', WEST 50' TO CORNER #5, CLAIM 253
 SOUTH 100', EAST 100' TO CORNER #3, CLAIM 295

EUREKA COUNTY

ELKO COUNTY

NOTES
 ALL CLAIMS ARE 600' X 1500' UNLESS OTHERWISE SHOWN
 LOCATION MONUMENTS ARE 10' FROM END LINE OF CLAIM
 UNLESS OTHERWISE SHOWN.

LEGEND

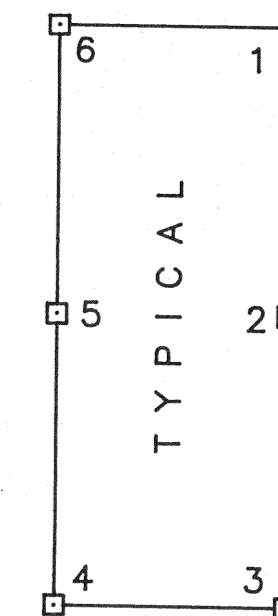
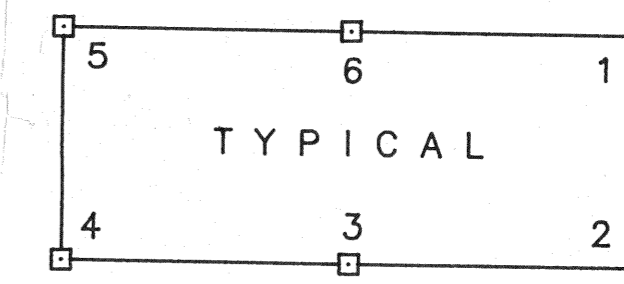
- ☒ 3 1/2" X 3 1/2" X 4' WOOD POST LOCATION MONUMENT
- 3 1/2" X 3 1/2" X 4' WOOD POST MONUMENT
- ⊗ INDICATES SECTION CORNER

LOCATION DATES

FEBRUARY 18, 1992 253-278
 FEBRUARY 19, 1992 279-314

TRUE NORTH

SCALE 1" = 500'



FILED AT THE REQUEST OF *Newmont Exploration Ltd*
 on *April 23*, 19 *92*, at *00* mins, past *12* M.
 RECORDS OF EUREKA COUNTY, NEVADA M. N. REBALEATI, Recorder
 File No. **140789** Fee \$ *180.00*

MAP OF THE
WOL LODGE MINING CLAIMS
 Eureka & Elko Counties, Nevada

T.35N., R.52E.
 Located by Robert W. Schlichting
 AGENT FOR
 NEWMONT EXPLORATION LIMITED

P.O. Box 669
 Carlin, Nevada 89822

March 3, 1992

APEX SURVEYING INC. RIVERTON, WYOMING