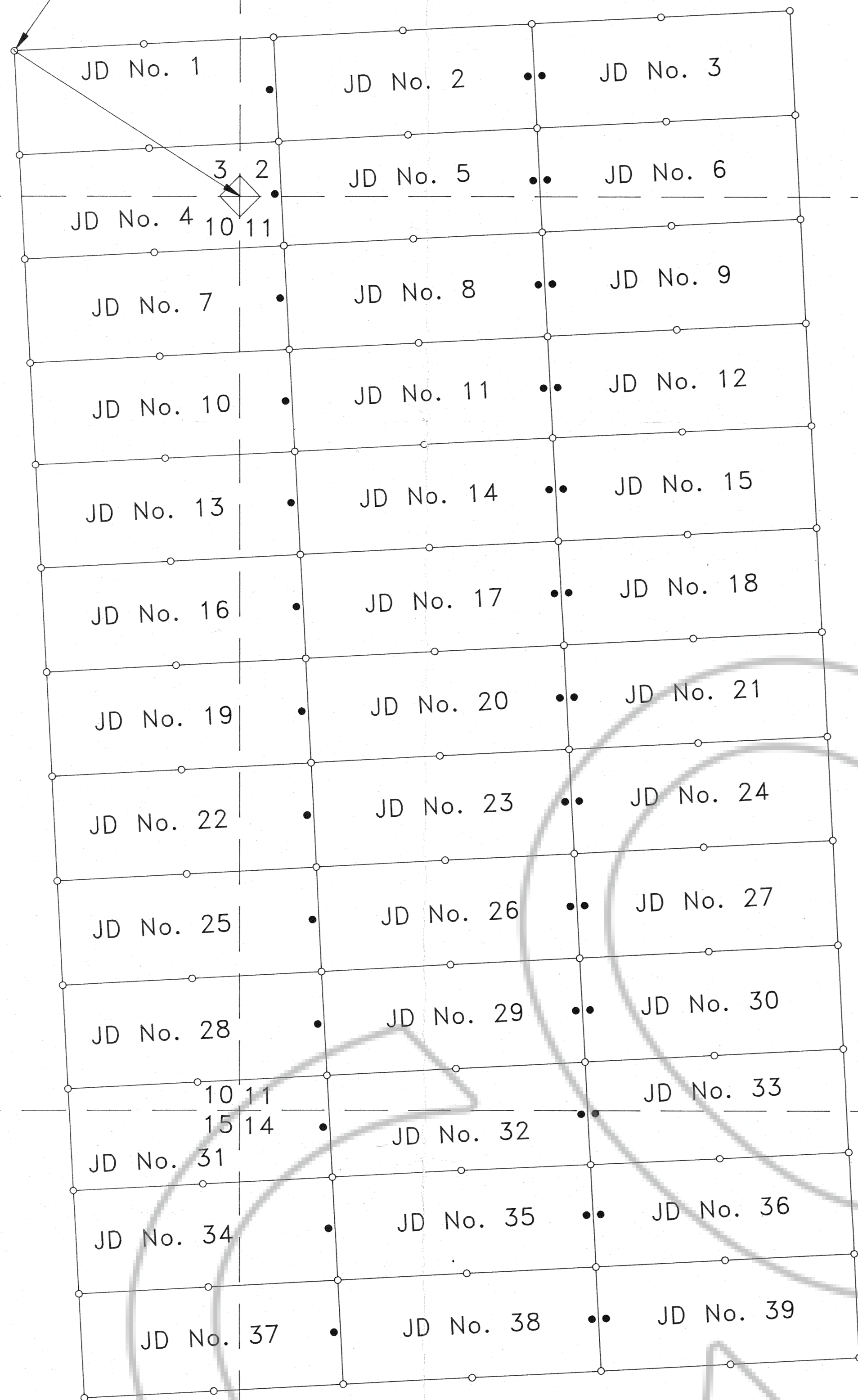
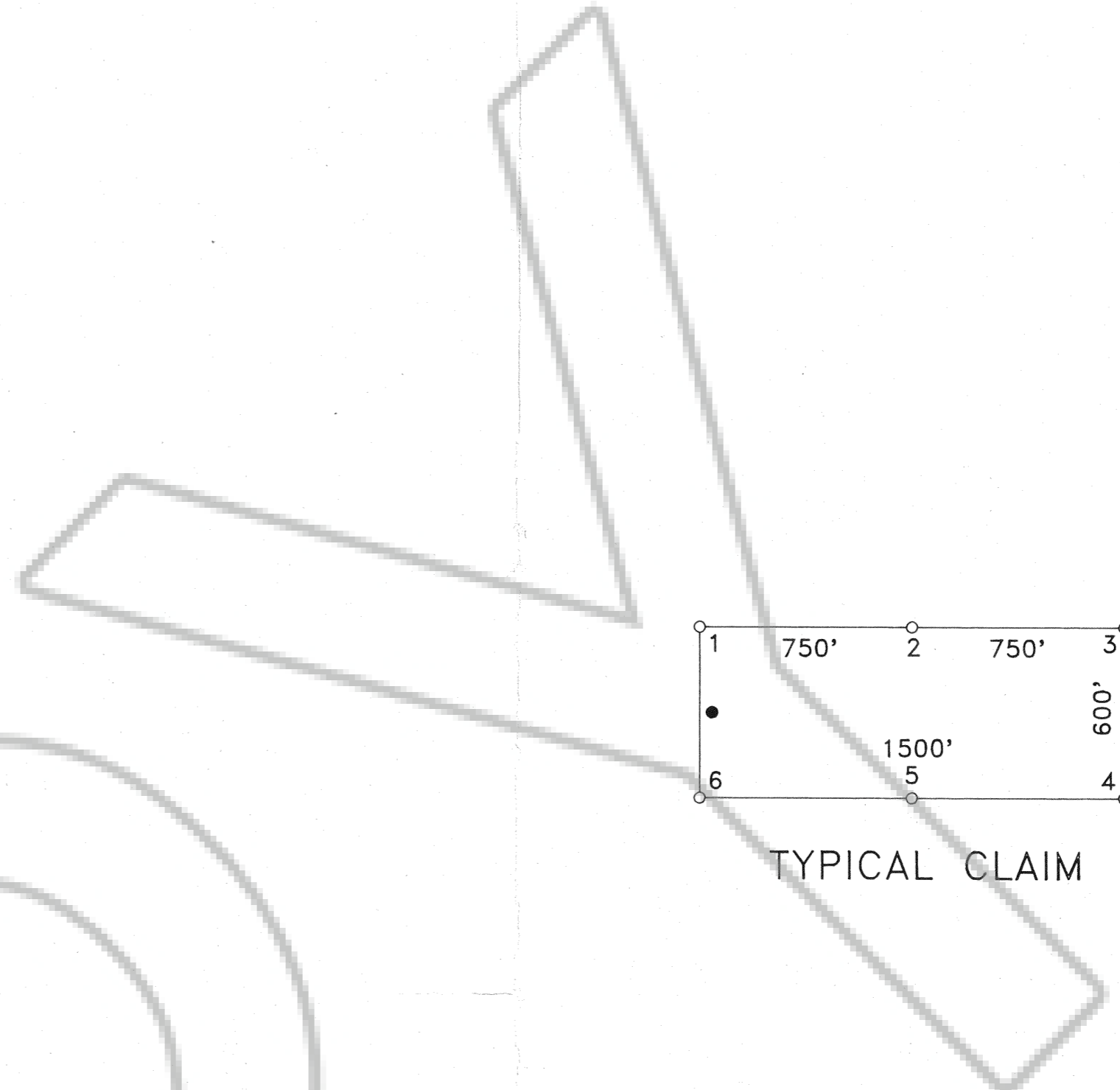


TIE: NW CORNER JD No. 1
 S. 57°20'39" E 1550.50'
 TO CORNER BRASS CAP 3,2,10,11



T 25 N

R 49 E

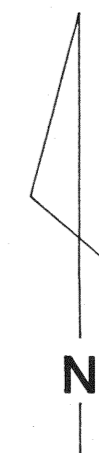
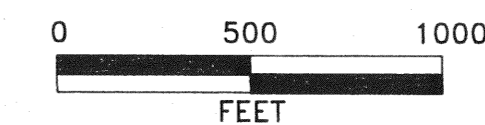


LOCATION DATES

MAY 27, 1992 JD Nos 25-39
 MAY 28, 1992 JD Nos 1-24

NOTES

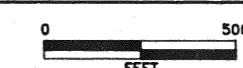
- ALL CLAIMS ARE 1500' X 600'
 - ALL MONUMENTS ARE 3" X 5' WHITE PVC PIPE
 - ALL CORNER AND SIDE CENTER POSTS ARE 3" X 5' PVC PIPE
- LOCATION MONUMENTS ARE SET IN 10' FROM END LINES
- LOCATOR: IDAHO RESOURCES CORP.
 P.O. BOX 2183
 GRAND JUNCTION, CO. 81502



FILED AT THE REQUEST OF *Kennecott Corp*
 on *June 26* 19 *92*, at *05* mins, past *10* M.
 RECORDS OF EUREKA COUNTY, NEVADA M. N. REBALEATI, Recorder
 File No. *141362* Fee \$ *585.00*

Idaho Resources Corp.

P.O. Box 2183
 Grand Junction, CO 81502



File: JD.DWG
 Plt: 1=500

Data By:	
Drafted By:	RL
Date:	6-11-92
Revised:	

JD LODGE CLAIMS
1-39

EUREKA COUNTY, NEVADA

141362