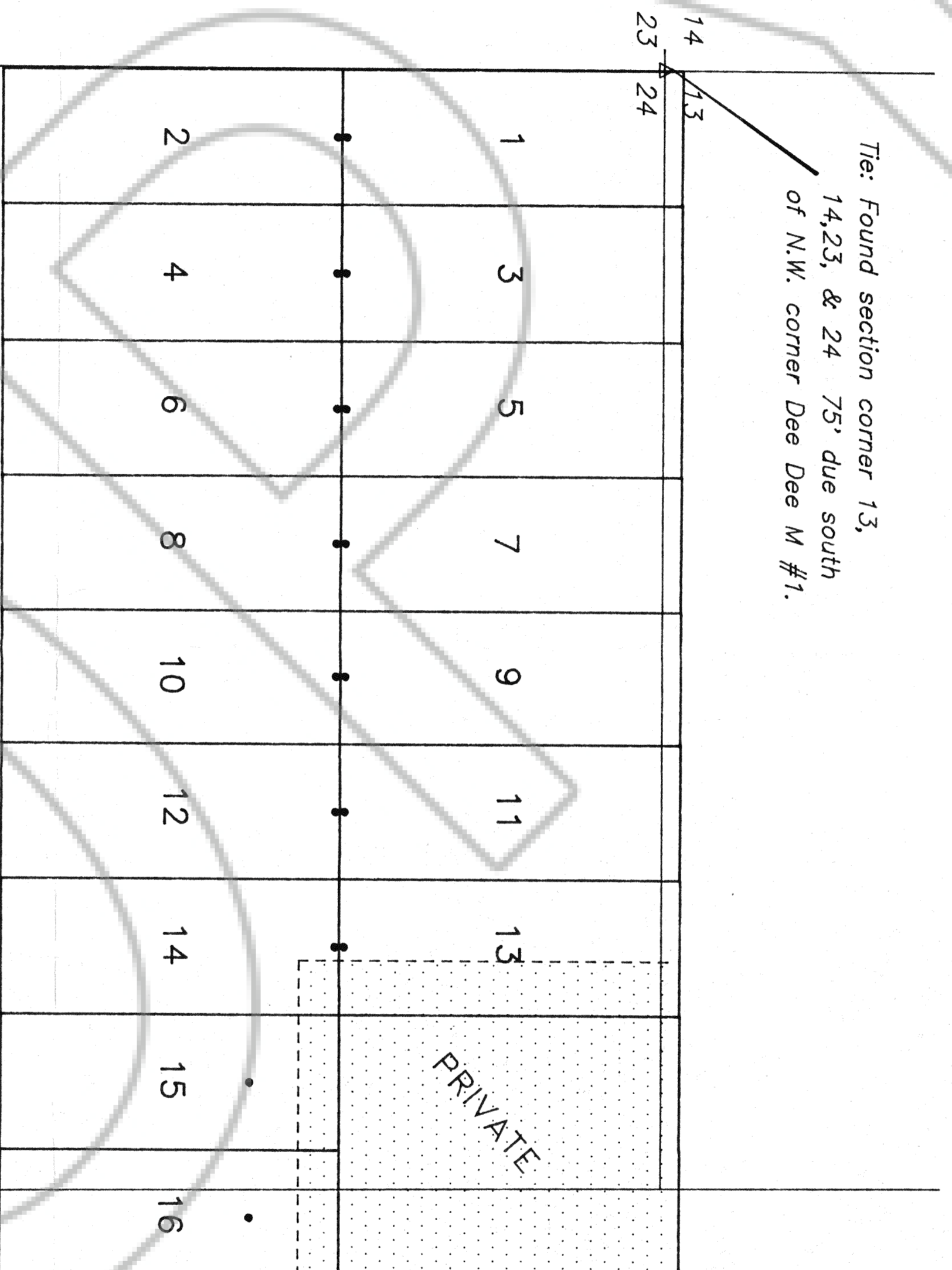


R48E

T28N



DEE DEE M LODGE CLAIMS
#1 - 16

Crescent Valley
(East Cortez)

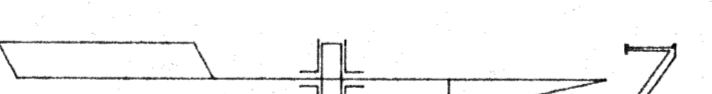
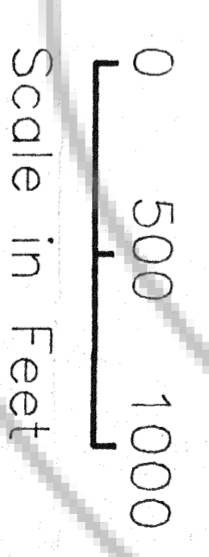
Location: Section 24, T 28 N, R 48 E M.D.B. & M.
in Eureka County, Nevada

Locator: Noranda Exploration, Inc.
65 N. Edison Way, Ste. 4
Reno, Nevada 89510

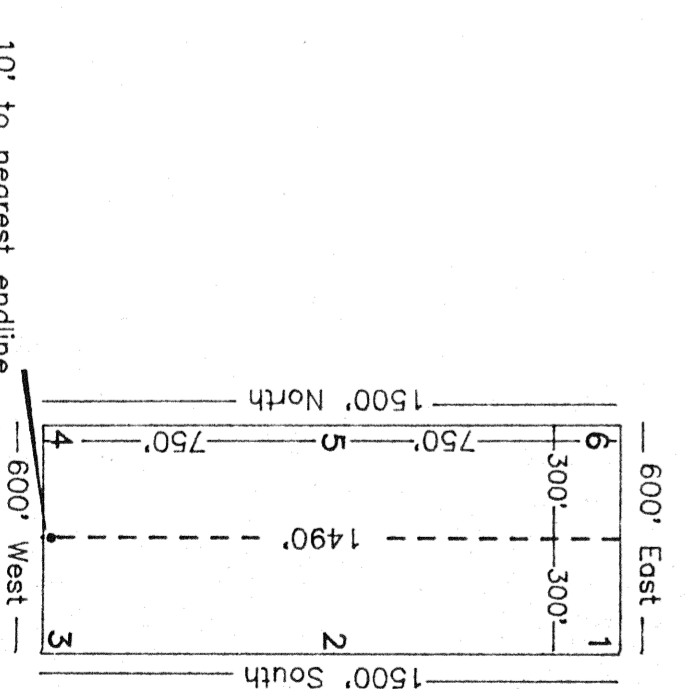
Location Date: Dee Dee M Claims #1-16, April 23, 1992

Tie: Found Section Corner 13, 14, 23, & 24 75' due south of
NW corner of Dee Dee M #1

Discovery Monuments: For #1, 3, 5, 7, 9, 11, & 13 monuments are located
10' from south end line, and 1490' from north
end line on center line of claim.
For #2, 4, 6, 8, 10, 12, & 14 monuments are located
10' from north end line and 1490' from south
end line on center line of claim.
For #15 & 16 monuments are located 400' from
north end line and 1100' from south end line on
center line of claim.



Typical Claim



FILED AT THE REQUEST OF *Noranda Exploration, Inc.*
Record # *144935* at *4:55* mins, 10:01 *P.M.*
RECORD # *144935* COUNTY, NEVADA M. N. REBELEM, Recorder
Fee \$ *242*