

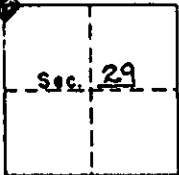
142193

CORNER RECORD

Filed as required by Statutes of Nevada, 1969, Chapter 366.

Sheet 1 of 2 sheets.Sec. 29 Twp. 34N Range 52E, Mt. Diablo PM.County of ELKO AND EUREKA, State of Nevada.

SYMBOLS



- Official corner found.
 Corner found, authenticity doubtful.
 Corner searched for and not found.

DESCRIPTION OF CORNER MONUMENT

FOUND THE ORIGINAL WOODEN POST. SET 2" dia. x 24" long GALV. I.P. WITH 3/4" dia. AL. CAP 0.3 FT. AB. GRD.

STAMPED

PLS 6196
T34N R52E
S19 | S20
S30 | S29
1992

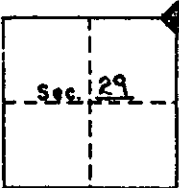
DESCRIPTION OF BEARING TREES, MOUND OF STONE, ETC.

SET A FULL STEEL FENCE POST, WITH THE ORIGINAL WOOD POST WIRED TO IT, 0.5 FT NORTH OF MONUMENT.

DESCRIPTION OF LOCATION TO ENABLE RECOVERY BY OTHERS.

MONUMENT FALLS ON GRADUALLY SLOPING GRD. TO THE NORTHEAST AND IS COVERED WITH SPARSE GRASS AND SHORT SAGE BRUSH.

SYMBOLS



- Official corner found.
 Corner found, authenticity doubtful.
 Corner searched for and not found.

DESCRIPTION OF CORNER MONUMENT

FOUND THE REMAINS OF THE ORIG. WOODEN POST. SET A 2" dia. x 24" long GALV. I.P. WITH A 3/4" AL. CAP 0.3 FT AB. GRD.

STAMPED

PLS 6196
T34N R52E
S20 | S21
S29 | S28
1992

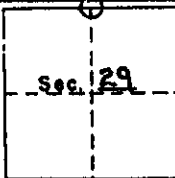
DESCRIPTION OF BEARING TREES, MOUND OF STONE, ETC.

SET A FULL STEEL FENCE POST, WITH THE REMAINS OF THE ORIGINAL WOODEN POST WIRED TO IT, 0.5 FT NORTH OF MONUMENT.

DESCRIPTION OF LOCATION TO ENABLE RECOVERY BY OTHERS.

MONUMENT IS LOCATED ON A SOUTHERLY SLOPING HILLSIDE COVERED WITH GRASSY VEGETATION AND NO SAGE BRUSH.

SYMBOLS



- Official corner found.
 Corner found, authenticity doubtful.
 Corner searched for and not found.

DESCRIPTION OF CORNER MONUMENT

SET A 2" dia. x 24" long GALV. I.P. WITH 3/4" dia. AL. CAP 0.3 FT AB. GRD.

STAMPED

PLS 6196
T34N R52E
1/4 | S20
1/4 | S29
1992

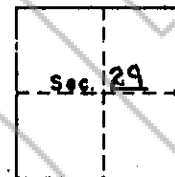
DESCRIPTION OF BEARING TREES, MOUND OF STONE, ETC.

SET A FULL STEEL FENCE POST 0.5 FT. NORTH OF THE MONUMENT.

DESCRIPTION OF LOCATION TO ENABLE RECOVERY BY OTHERS.

MON. SETS ON FLAT GROUND 20 FT EAST OF A NORTH/SOUTH ROAD 15 FT WIDE. GROUND IS COVERED WITH 2 TO 3 FT. TALL SAGE BRUSH AND SPARSE GRASS.

SYMBOLS



- Official corner found.
 Corner found, authenticity doubtful.
 Corner searched for and not found.

DESCRIPTION OF CORNER MONUMENT

FOUND THE REMAINS OF THE ORIGINAL WOODEN POST. SET A 2" dia. x 24" long GALV. I.P. WITH A 3/4" dia. AL. CAP 0.3 FT. AB. GRD.

STAMPED

PLS 6196
T34N R52E
1/4
S29 | S28
1992

DESCRIPTION OF BEARING TREES, MOUND OF STONE, ETC.

SET A FULL STEEL FENCE POST, WITH THE REMAINS OF THE ORIGINAL WOODEN POST WIRED TO IT, 0.4 FT NORTH OF MONUMENT.

DESCRIPTION OF LOCATION TO ENABLE RECOVERY BY OTHERS.

MON. FALLS 56 FT SOUTH OF A STEEP E RUNNING WEST ON A STEEP WESTERLY FACING SLOPE. THE GROUND IS COVERED WITH GRASSY VEGETATION AND SPARSE SAGE BRUSH.

SURVEYOR'S CERTIFICATE.

I, MARK C. BOGE

Registered Land Surveyor No. 6196 in the State of Nevada do hereby certify that the foregoing is a true, complete and accurate representation of the monument, or monuments, recovered, rehabilitated, restored, re-established or otherwise effected and mentioned in the foregoing Corner Record.

Date survey was completed JULY 1, 1992

Date Corner Record filed _____

Mark C. Boge
Registered Land Surveyor

9-8-92

Accepted for filing on this 9th day of Sept., 1992
in the office of the County Recorder Eureka County,
State of Nevada.

142193

M. J. Rebalanti
County Recorder

BOOK 238 PAGE 34

T _____ N, R _____ E, Sec. _____

Refugio Etchegaray - Deputy