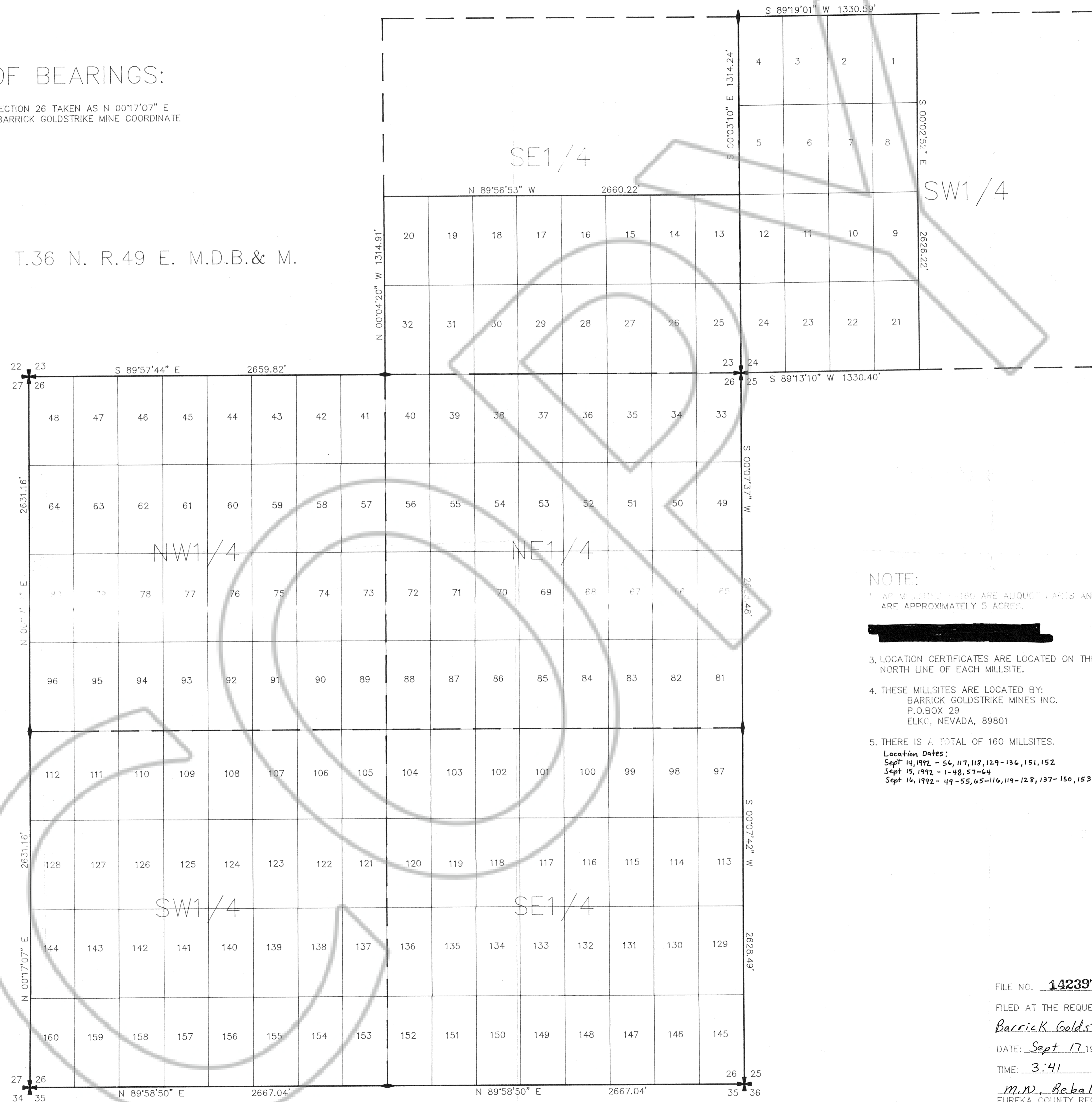


BASIS OF BEARINGS:

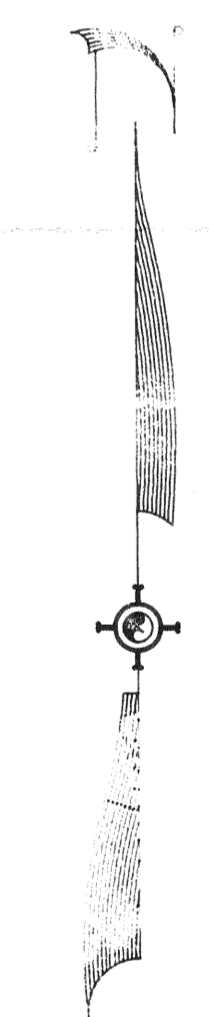
THE WEST LINE OF SECTION 26 TAKEN AS N 00°17'07" E
ACCORDING TO THE BARRICK GOLDSTRIKE MINE COORDINATE
SYSTEM.

T.36 N. R.49 E. M.D.B.& M.

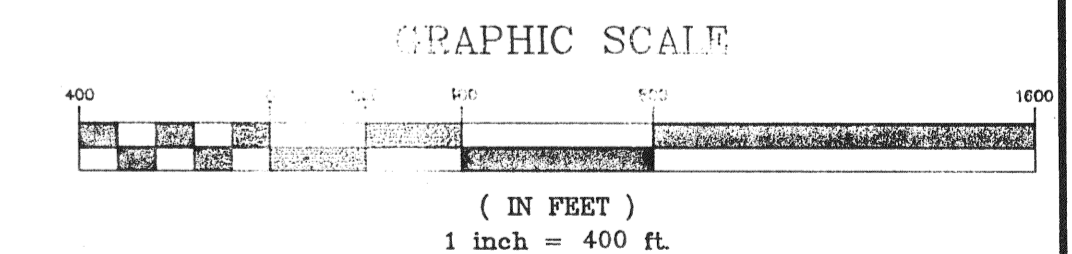


NOTE:

1. ALL MILLSITE CLAIMS ARE ALLOTTED CLAIMS AND ARE APPROXIMATELY 5 ACRES.
2. [REDACTED]
3. LOCATION CERTIFICATES ARE LOCATED ON THE NORTH LINE OF EACH MILLSITE.
4. THESE MILLSITES ARE LOCATED BY:
BARRICK GOLDSTRIKE MINES INC.
P.O. BOX 29
ELKO, NEVADA, 89801
5. THERE IS A TOTAL OF 160 MILLSITES.
Location Dates:
Sept 14, 1992 - 56, 117, 118, 129-136, 151, 152
Sept 15, 1992 - 1-48, 57-64
Sept 16, 1992 - 49-55, 65-116, 119-128, 137-150, 153-160



1" = 400'



FILE NO. 142397
FILED AT THE REQUEST OF
Barrick Goldstrike Mines
DATE: Sept 17, 1992
TIME: 3:41 P.M.
M.V. Babalati
EUREKA COUNTY RECORDER

MAP OF
WB 1-160 MILLSITE CLAIMS
LOCATED BY
BARRICK GOLDSTRIKE MINES INC.
P.O. BOX 29
ELKO, NEVADA 89801
SECTIONS 23, 24 & 26 T.36N. R.49E. M.D.B.&M.
LYNN MINING DISTRICT EUREKA CO. NEVADA

SUMMIT ENGINEERING CORPORATION
CONSULTING ENGINEERS
AND SURVEYORS
2120 N. WYOMING STREET
ELKO, NEVADA 89801 (702) 735-6036

SHEET 1
OF 1