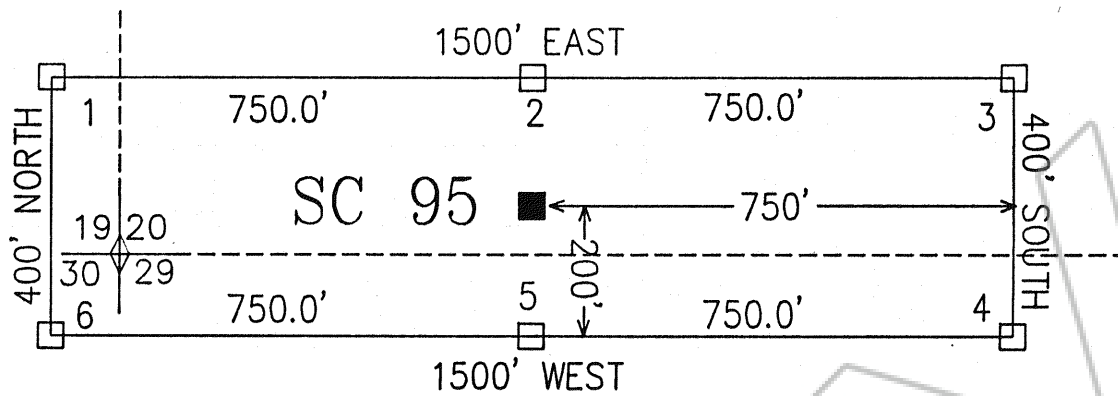


SW 1/4



TIE: 125' NORTH, 107' EAST
FROM SOUTHWEST CORNER
SC 95 TO SECTION CORNER

LEGEND

- ◇ FOUND STONE IN PLACE
- LOCATION MONUMENT
4" X 4" WOOD POST
- CORNER/SIDECENTER MONUMENT
4" X 4" WOOD POST

LOCATION DATE:
July 31, 1992

LOCATOR:
NEWMONT EXPLORATION LTD.
P.O. BOX 669
CARLIN, NV 89822



SCALE 1" = 300'

Claim map of the
SC 95
Lode Mining Claim Situated Within
SW1/4 of Section 20
T. 31 N., R. 51 E.
Eureka County, Nevada

FILED AT THE REQUEST OF Newmont Exploration Ltd
on Oct 15 19 92, at 59 mins, past 1p M.
RECORDS of EUREKA COUNTY, NEVADA M. N. REBALEATI, Recorder
File No. **142802** Fee \$ 15.00