

TIE: NORTHEAST CORNER, SECTION 4,
T. 35 N., R. 48 E., M.D.P.M.
EAST 60' TO THE NORTHEAST
CORNER OF CLAIM 36

T. 35 N.

WEST 5400'

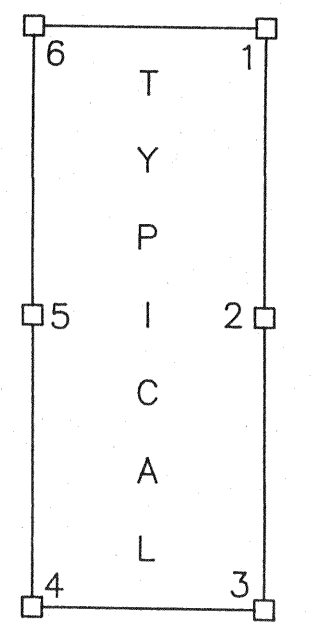
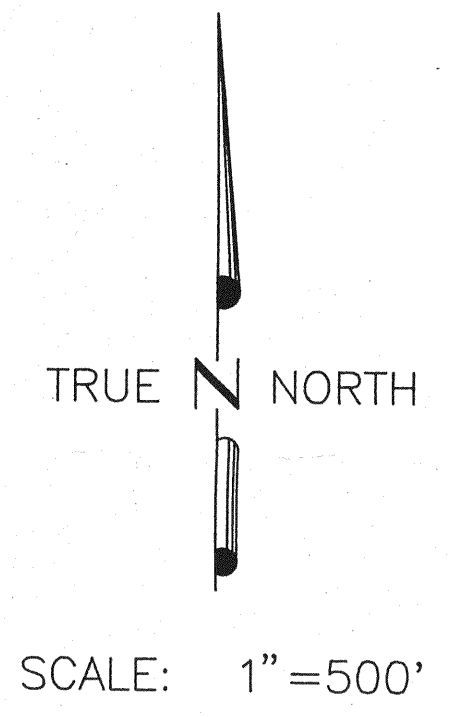
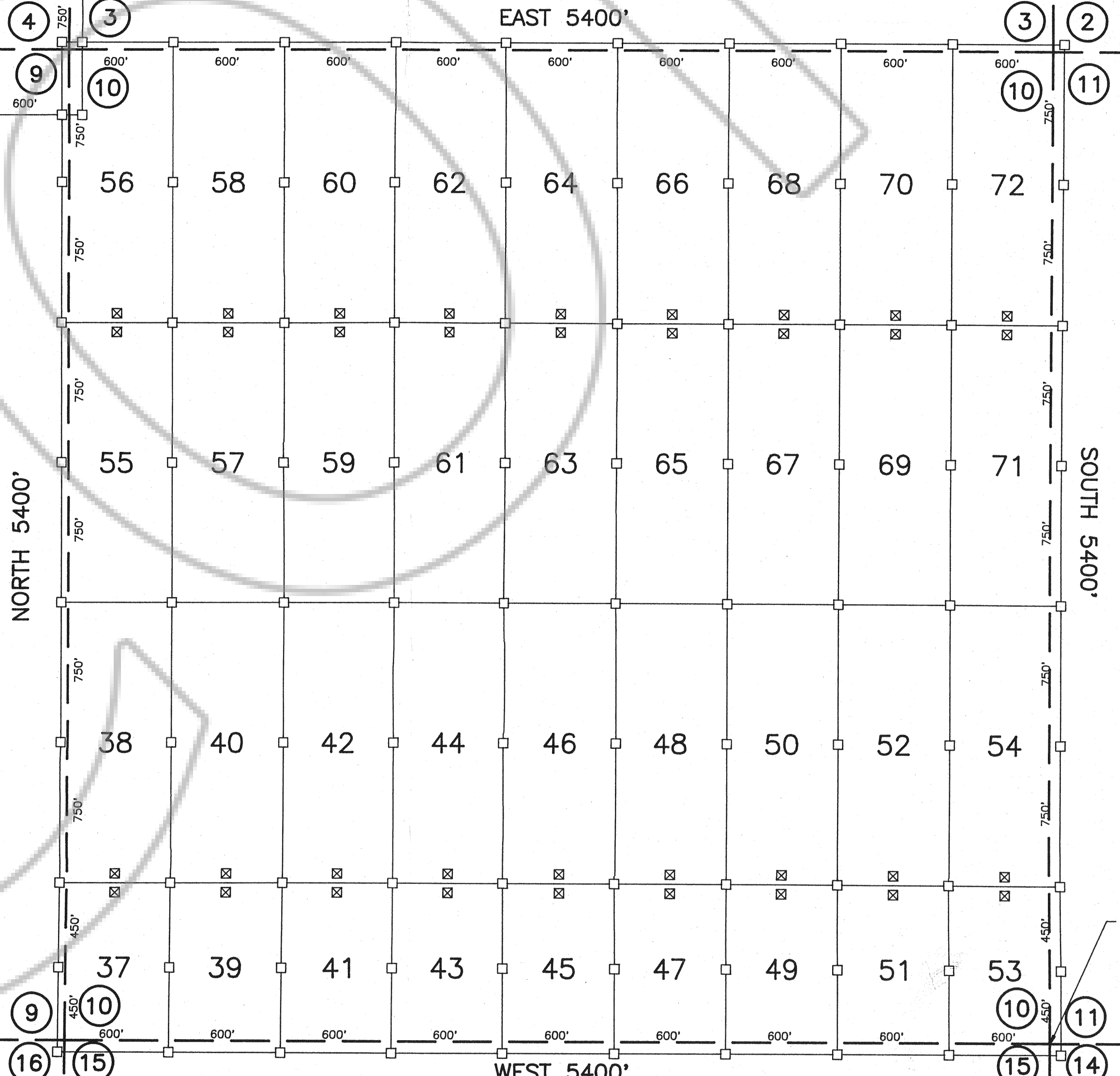
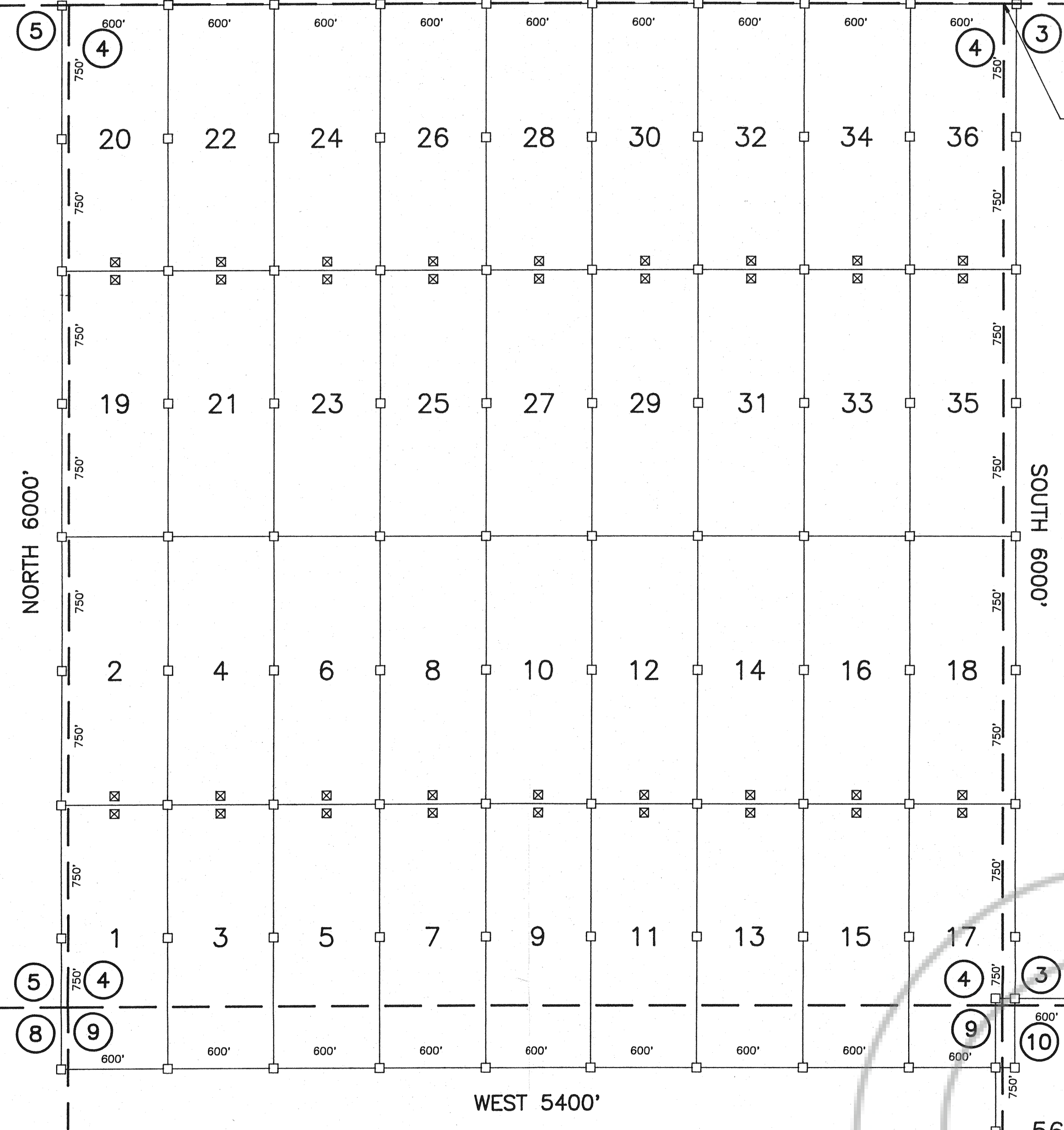
EAST 5400'

R. 48 E.

NORTH 5400'

SOUTH 5400'

WEST 5400'



LEGEND

- ⊗ WOOD POST LOCATION MONUMENT
- WOOD POST MONUMENT
- ⊗⊗ INDICATES SECTION CORNER

LOCATION DATES -- THIS SHEET

AUGUST 14, 1992	19-36
AUGUST 15, 1992	1-18
AUGUST 16, 1992	37-54
AUGUST 17, 1992	55-72

NOTES

- 1.) ALL CLAIMS ARE 600' X 1500' UNLESS OTHERWISE SHOWN
- 2.) LOCATION MONUMENTS ARE 10' FROM END LINE OF CLAIM UNLESS OTHERWISE SHOWN.

FILED AT THE REQUEST OF Western States Minerals Corp.
on Nov 4 1992 at 27 mins, past 3 p. M.
RECORDS OF EUREKA COUNTY, NEVADA M. N. REBALEATI, Recorder
File No. 143110 Fee \$ 10.80

SHEET 1 OF 3

MAP OF THE
AU LODE MINING CLAIMS
Eureka County, Nevada

T. 35 N., R. 48 E.
Located by Robert W. Schlichting
AGENT FOR
WESTERN STATES MINERALS CORPORATION

4975 Van Gordon Street
Wheat Ridge, Colorado 80033

143110

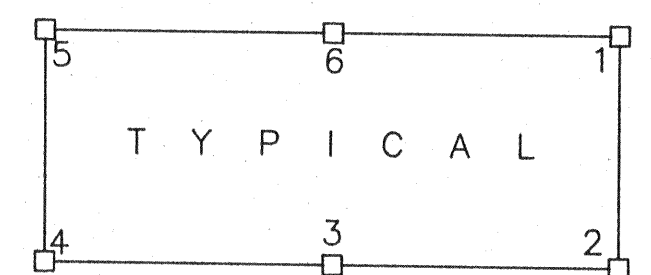
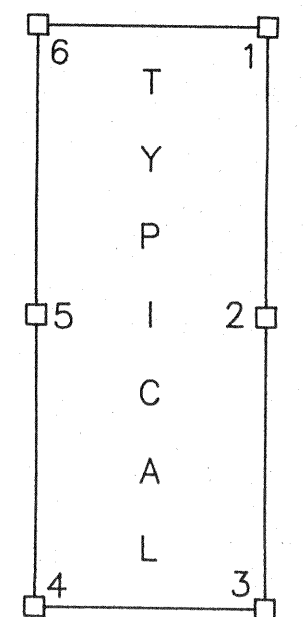
September 9, 1992

R. 48 E.

TIE: NORTHWEST CORNER, SECTION 14,
T. 35 N., R. 48 E., M.D.P.M.
WEST 60' AND NORTH 60' TO THE
NORTHWEST CORNER OF CLAIM 128

TRUE NORTH

SCALE: 1"=500'



EAST 5400'

NORTH 5400'

SOUTH 5400'

WEST 5400'

T. 35 N.

EAST 3000'

SOUTH 2800'

NORTH 4000'

WEST 1500'

WEST 1500'

EAST 5400'

NORTH 5400'

SOUTH 5400'

WEST 5400'

- LEGEND**
- ☒ WOOD POST LOCATION MONUMENT
 - WOOD POST MONUMENT
 - ⊙ INDICATES SECTION CORNER

LOCATION DATES - THIS SHEET

AUGUST 16, 1992	73-108
AUGUST 17, 1992	127-134
AUGUST 18, 1992	135-144, 117-126
AUGUST 19, 1992	109-116
AUGUST 20, 1992	168-179

NOTES

- 1.) ALL CLAIMS ARE 600' X 1500' UNLESS OTHERWISE SHOWN
- 2.) LOCATION MONUMENTS ARE 10' FROM END LINE OF CLAIM UNLESS OTHERWISE SHOWN.

FILED AT THE REQUEST OF Western States Minerals Corp.,
on 27th 4 19 92, at 27 min, past 3 P. M.,
RECORDS OF EUREKA COUNTY, NEVADA M. N. REBALEATI, Recorder
File No. 143110 Fee \$ 1260

SHEET 2 OF 3

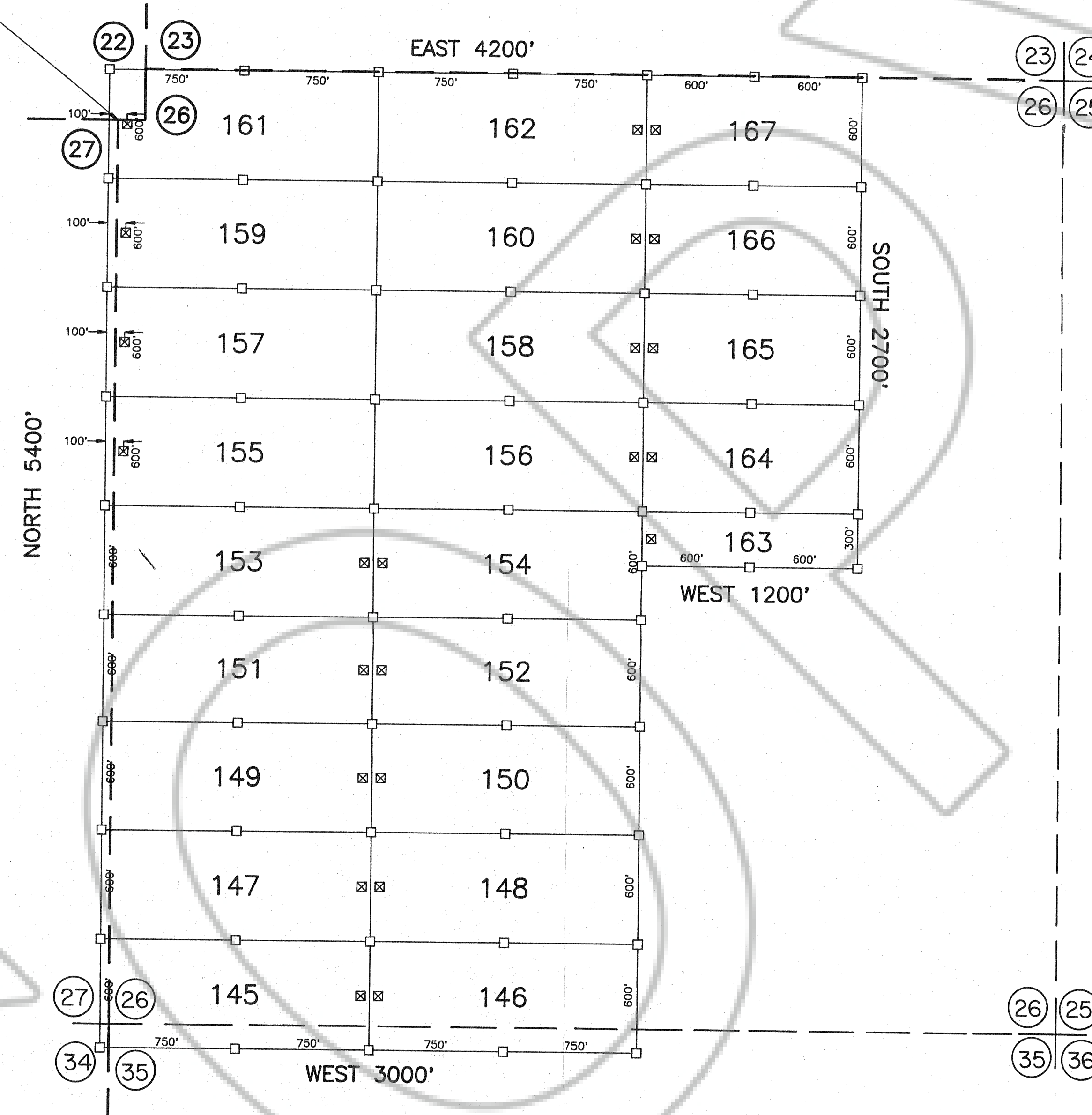
MAP OF THE
AU LODE MINING CLAIMS
Eureka County, Nevada

T.35 N., R.48 E.
Located by Robert W. Schlichting
AGENT FOR
WESTERN STATES MINERALS CORPORATION
4975 Van Gordon Street
Wheat Ridge, Colorado 80033
143110
September 9, 1992

R. 48 E.

TIE: NORTHWEST CORNER, SECTION 26,
T. 35 N., R. 48 E., M.D.P.M.
WEST 50' AND NORTH 280' TO THE
NORTHWEST CORNER OF CLAIM 161

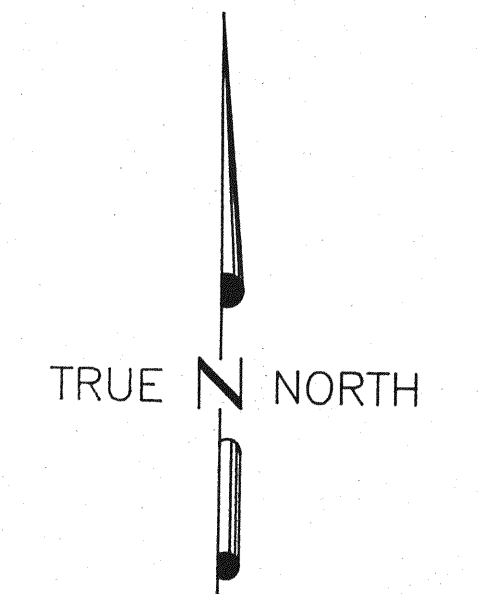
T. 35 N.



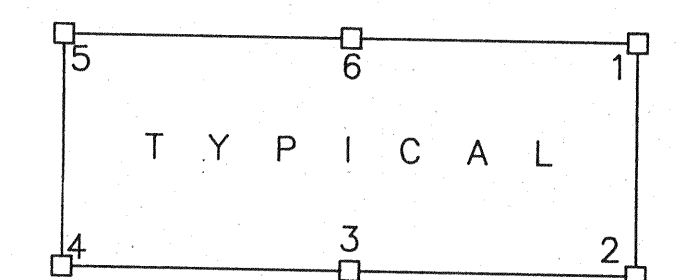
- LEGEND**
- ☒ WOOD POST LOCATION MONUMENT
 - WOOD POST MONUMENT
 - ○ INDICATES SECTION CORNER

LOCATION DATES - THIS SHEET
AUGUST 16, 1992 145-167

- NOTES**
- 1.) ALL CLAIMS ARE 600' X 1500' UNLESS OTHERWISE SHOWN
 - 2.) LOCATION MONUMENTS ARE 10' FROM END LINE OF CLAIM UNLESS OTHERWISE SHOWN.



SCALE: 1"=500'



FILED AT THE REQUEST OF Western States Minerals Corp.
 on 11/04/92, at 27 mins, Dist 22 N,
 RECORDS OF EUREKA COUNTY, NEVADA M. N. REBALEATI, Recorder
 File No. 143110 Fee \$ 345.00

SHEET 3 OF 3

MAP OF THE
AU LODE MINING CLAIMS
 Eureka County, Nevada

T.35 N., R.48 E.
 Located by Robert W. Schlichting
 AGENT FOR
 WESTERN STATES MINERALS CORPORATION

4975 Van Gordon Street
 Wheat Ridge, Colorado 80033

143110

September 9, 1992