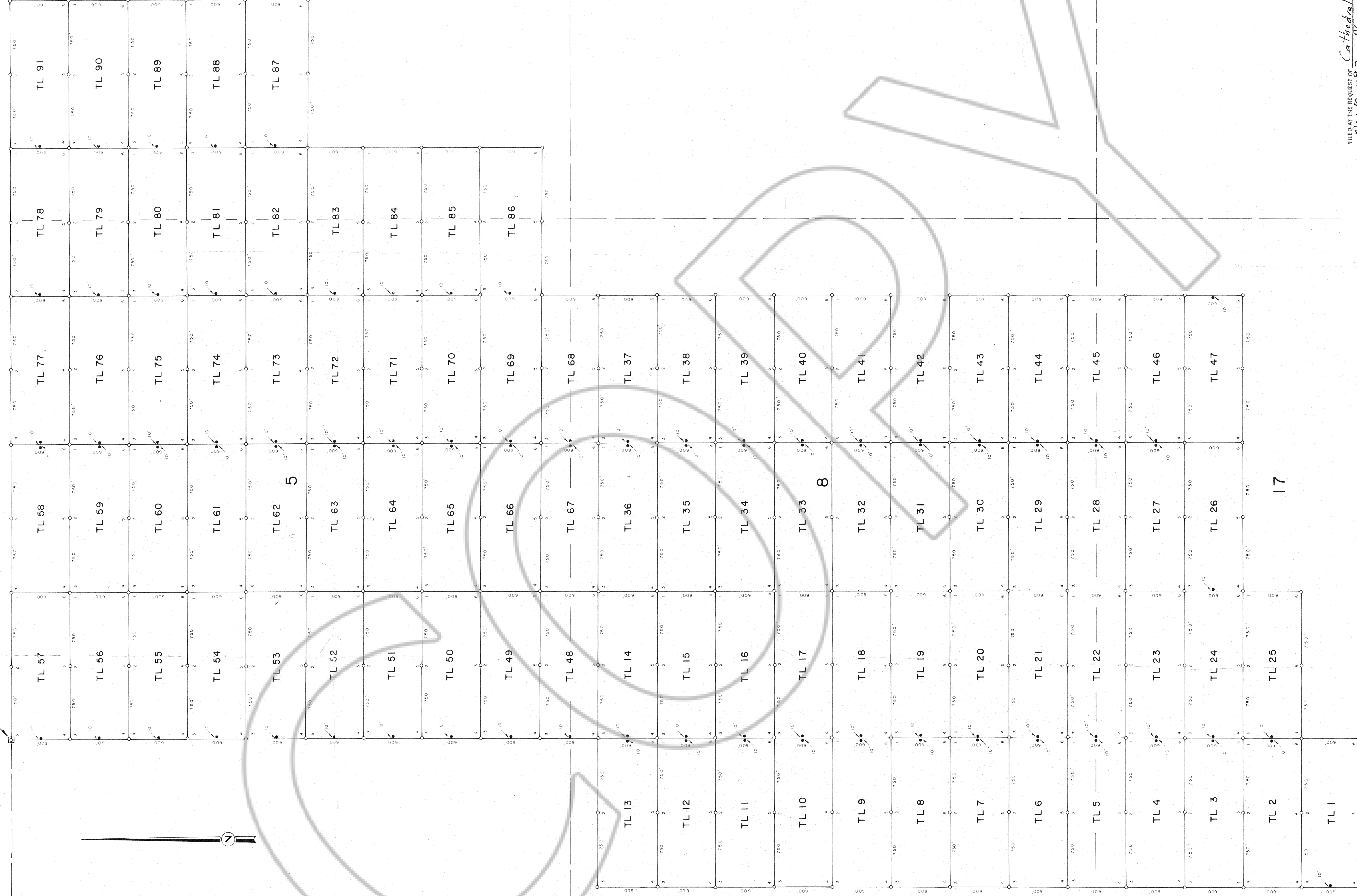


NW CORNER SECTION 5, TWP 25 N., RNG. 49 E



LEGEND

- CLAIM LOCATION MONUMENT
- CLAIM POST
- SECTION LINE

LOCATED : JUNE 13th 1992 TO JUNE 18th 1992
 POSTS : 4" x 4" x 4" WOODEN
 LOCATOR : ABBEY GOLD INC.
 (A NEVADA CORPORATION)
 800-601 WEST HASTINGS ST.,
 VANCOUVER, B. C., CANADA
 V6B 5A6

FILED AT THE REQUEST OF *Cathedral Gold Corp*
 on *Nov 12, 1992* at *3:16* mins. DIST. *J.P.M.*
 RECORDS DEPARTMENT, COUNTY, NEVADA. M. M. REBALEATI, Recorder
 FEE \$ *5.00*

CATHEDRAL GOLD CORPORATION

MAP OF TL 1 - 91

GROUP OF LODE CLAIMS

TOWNSHIP 25 NORTH, RANGE 49 EAST,
 EUREKA COUNTY, NEVADA

SCALE IN FEET
 0 500 1000 1500

DATA BY : R. M. JONES DATE : 92 06 25 SCALE : 1" = 500'
 ALPHA - 2000 DRAFTING DATE : 92 06 26 DWG No. E-AN004D

143135