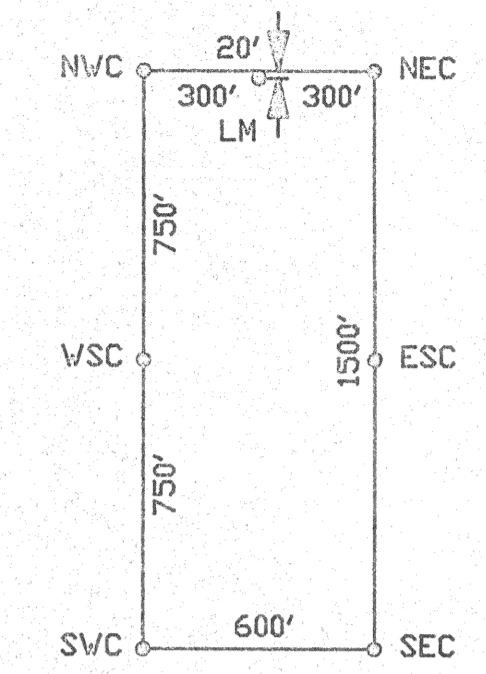
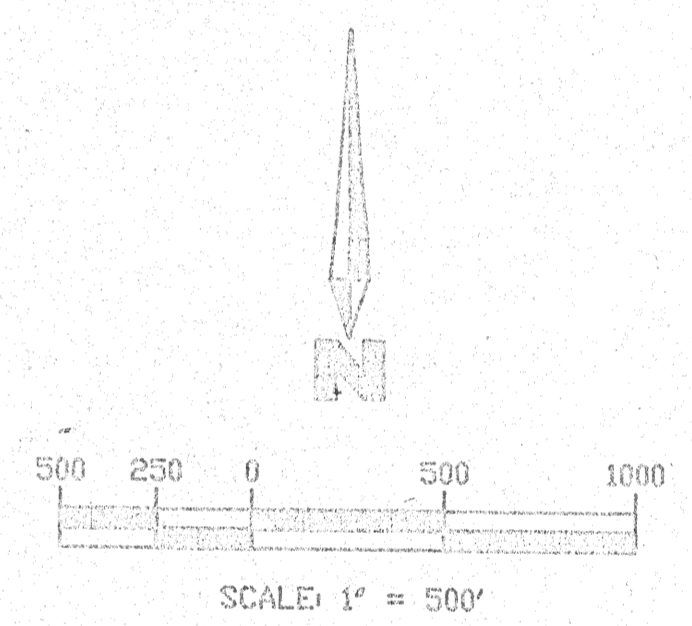


TIE FOUND SECTION CORNER
 NORTHWEST CORNER
 SECTION 28 T36N R48E
 M.D.P.M.



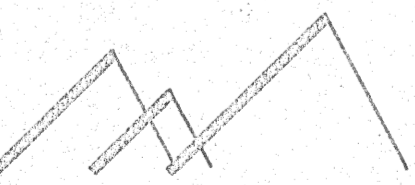
TYPICAL LODE CLAIM

- NOTES: ALL CLAIMS MEASURE 600' x 1500'
 LM - LOCATION MONUMENT
 NVC - NORTHWEST CORNER
 ESC - EAST SIDE CENTER
 NEC - NORTHEAST CORNER
 SVC - SOUTHWEST CORNER
 VSC - WEST SIDE CENTER
 SEC - SOUTHEAST CORNER
 SCALE: 1" = 500'



LOCATORS: WESTERN STATES MINERALS CORPORATION
 348 SEVENTH STREET, SUITE 7
 ELKO, NEVADA 89803
 AGENT: DAVID WALDNER

FILED BY THE REQUEST OF *Western States Minerals*
 on Nov 13 1992 at 5 mins, 5:01 3p.m.
 RECORDS OF EUREKA COUNTY, NEVADA M.N. REBALEATI, Recorder
 Fee \$ 5.00
 File No. **143209**

 WESTERN STATES
 MINERALS CORPORATION

MAP SHOWING
 LODE MINING CLAIMS
 RU - CLAIMS
 37-72
 LOCATED IN SECTIONS
 20,21,22,27,28,29,32,33,34 - T36N R48E **143209**

EUREKA COUNTY M.D.P.M. NEVADA