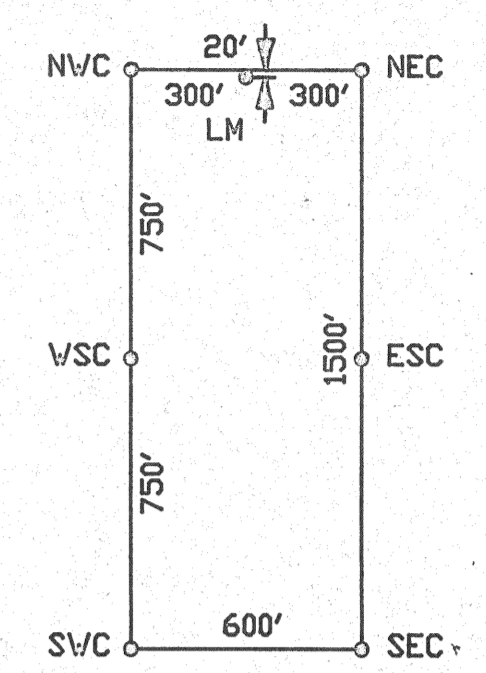
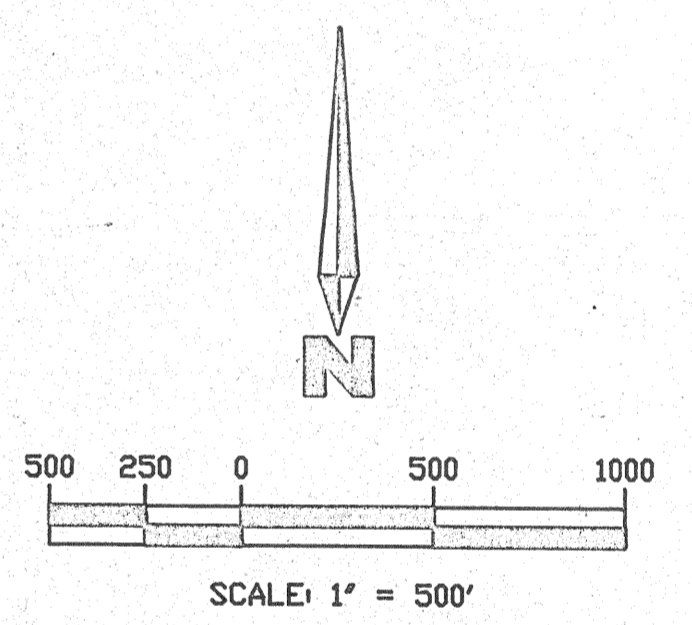


TIE FOUND SECTION CORNER  
NORTHWEST CORNER  
SECTION 20 T36N R48E  
M.D.P.M.



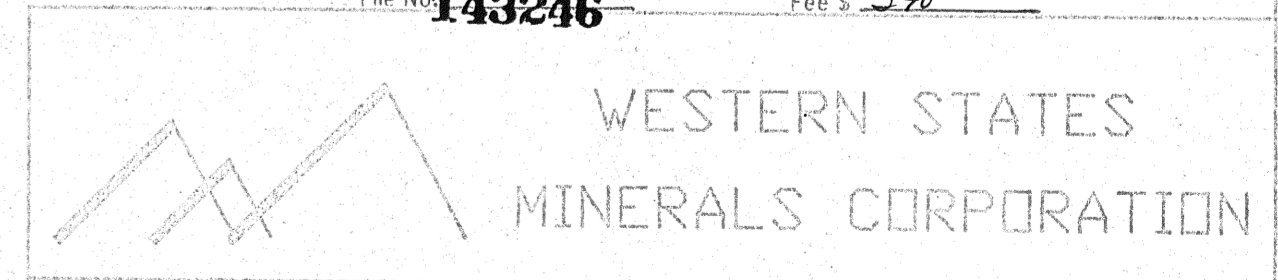
TYPICAL LODGE CLAIM

- NOTES: ALL CLAIMS MEASURE 600' x 1500'  
 LM - LOCATION MONUMENT  
 NVC - NORTHWEST CORNER  
 ESC - EAST SIDE CENTER  
 NEC - NORTHEAST CORNER  
 SVC - SOUTHWEST CORNER  
 VSC - WEST SIDE CENTER  
 SEC - SOUTHEAST CORNER  
 SCALE: 1" = 500'



LOCATORS: WESTERN STATES MINERALS CORPORATION  
 348 SEVENTH STREET, SUITE 7  
 ELKO, NEVADA 89803  
 AGENT: DAVID WALDNER

FILED AT THE REQUEST OF *Western States Minerals*  
 on *Nov 13* 19*22*, at *36* mins, past *3p. m.*  
 RECORDS OF EUREKA COUNTY, NEVADA M. N. REBALEATI, Recorder  
 File No. **143246** Fee \$ *5.00*



MAP SHOWING  
 LODGE MINING CLAIMS  
 RU - CLAIMS  
 73 - 108

**143246** LOCATED IN SECTIONS  
 16,17,18,19,20,21,28,29,30, - T36N R48E

EUREKA COUNTY M.D.P.M. NEVADA