

12

7

8

TIE: FOUND SECTION CORNER
NORTHWEST CORNER
SECTION 18 T36N R49E
M.D.P.M.

300' S 0° E 50' N 90° E N 90° E

ELKO COUNTY
LANDER COUNTY

13

18

17

S 0° E

N 0° E

LANDER COUNTY
EUREKA COUNTY

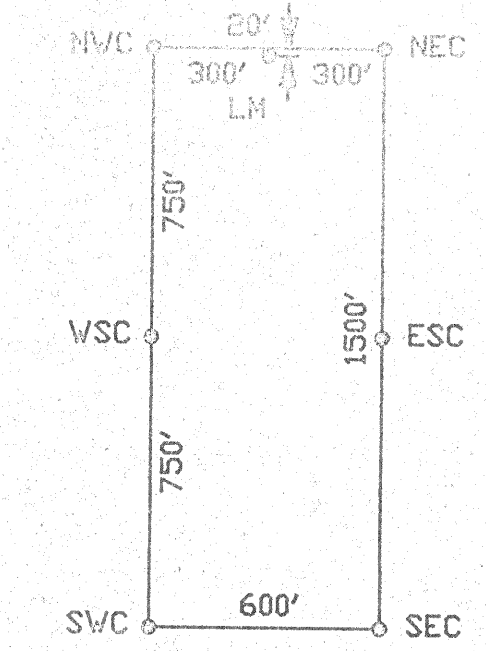
N 90° W

600'

24

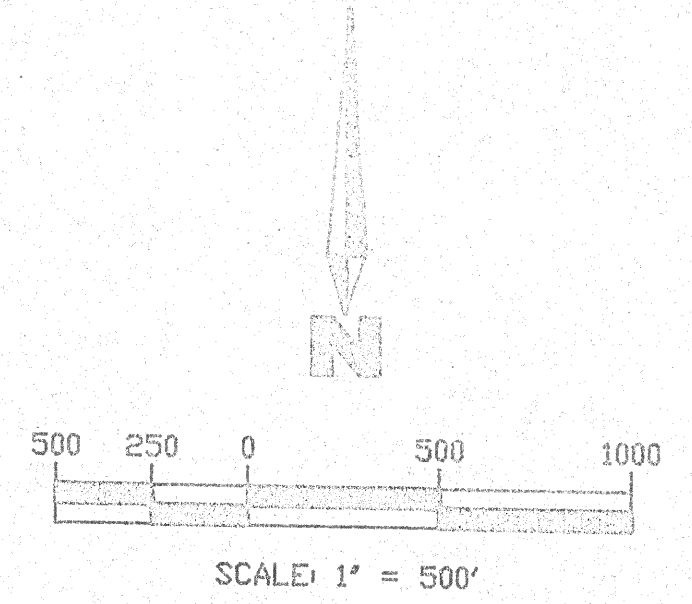
19

20



TYPICAL LODGE CLAIM

NOTES: ALL CLAIMS MEASURE 600' x 1500'
 LM - LOCATION MONUMENT
 NVC - NORTHWEST CORNER
 ESC - EAST SIDE CENTER
 NEC - NORTHEAST CORNER
 SVC - SOUTHWEST CORNER
 WSC - WEST SIDE CENTER
 SEC - SOUTHEAST CORNER
 SCALE: 1" = 300'



LOCATORS: WESTERN STATES MINERALS CORPORATION
 343 SEVENTH STREET, SUITE 7
 ELKO, NEVADA 89603
 AGENT: DAVID WALDNER

FILED AT THE REQUEST OF *Western States Minerals*
 on *Nov 13* 19 *92*, at *52* mins, past *3p* M.
 RECORDS OF EUREKA COUNTY, NEVADA M. N. REBALEATI, Recorder
 File No. **143262** Fee \$ *20*

WESTERN STATES MINERALS CORPORATION

MAP SHOWING
 LODGE CLAIMS
 RL - CLAIMS
 915 - 916, 931 - 934
 LOCATED IN SECTIONS
 18, 19, 17, 20 - T36N R49E

EUREKA COUNTY NEVADA **143262**