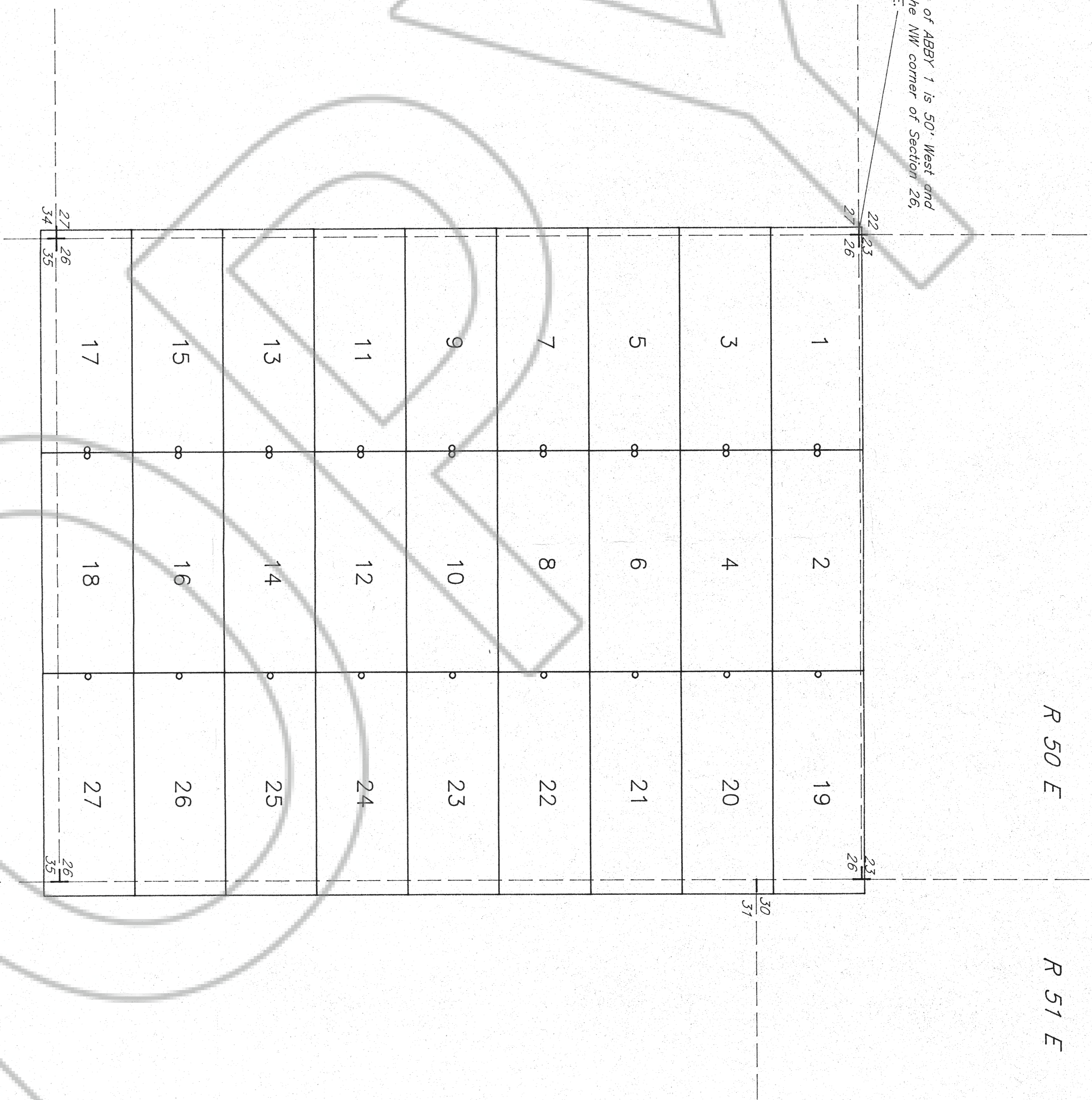


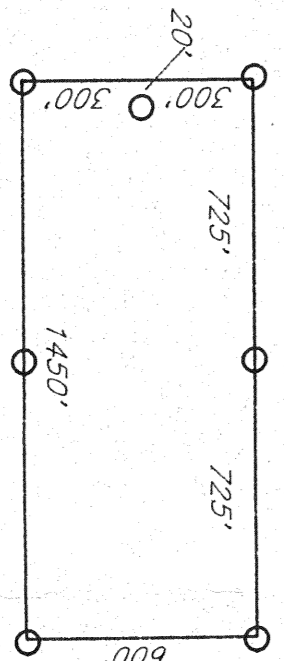
THE NW corner of ABBY 1 is 50' West and 20' North of the NW corner of Section 26, T 34 N, R 50 E.



LOCATOR:
 NEWMONT EXPLORATION LIMITED
 P.O. Box 669
 Corlin, Nevada 89822

LOCATION:
 Section 26 T34N, R50E
 Mount Diablo Base Line and Meridian
 Eureka County, Nevada

THE POINT:
 The NW corner of ABBY 1 is located 50' West and 20' North of the NW corner of Section 26 T34N, R50E.

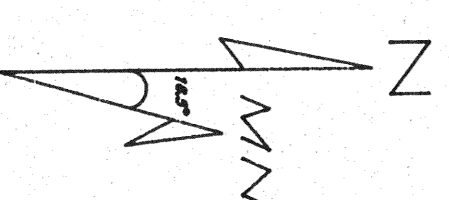


TYPICAL CLAIMS

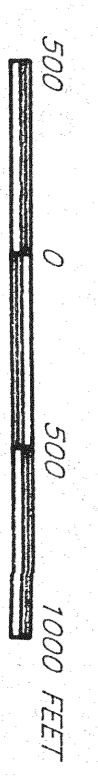
All claims are 1450' x 600'.
 Location Monuments are 20' in from end center.
 All posts are 4"x4"x4' wooden posts.

+ Found Section Corner

FILED AT THE REQUEST OF *Neumont Exploration Services*
 on 10/27 1992 at 7:28 pm, Carson City,
 COUNTY OF EUREKA COUNTY, NEVADA. M. N. REED, Notary Public.
 Fee \$ 20.50
 File No. 143741



Magnetic Declination 16.5°E



Big Creek			
EXPLORATION SERVICES			
ABBY 1-27 LODE MINING CLAIMS			
December 1, 1992	Located: 10/27-10/28/92	Drawn By: GH	
	Completed: 11/19/92	Revised:	
5130 Slope Drive, Sun Valley, Nevada 89433 • (702) 674-2708			