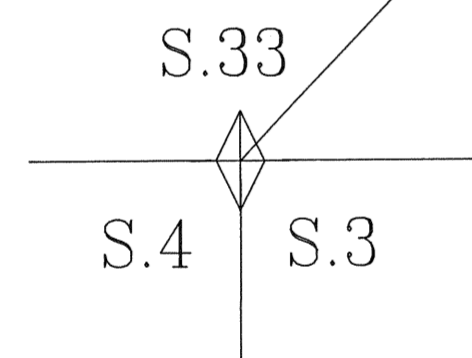


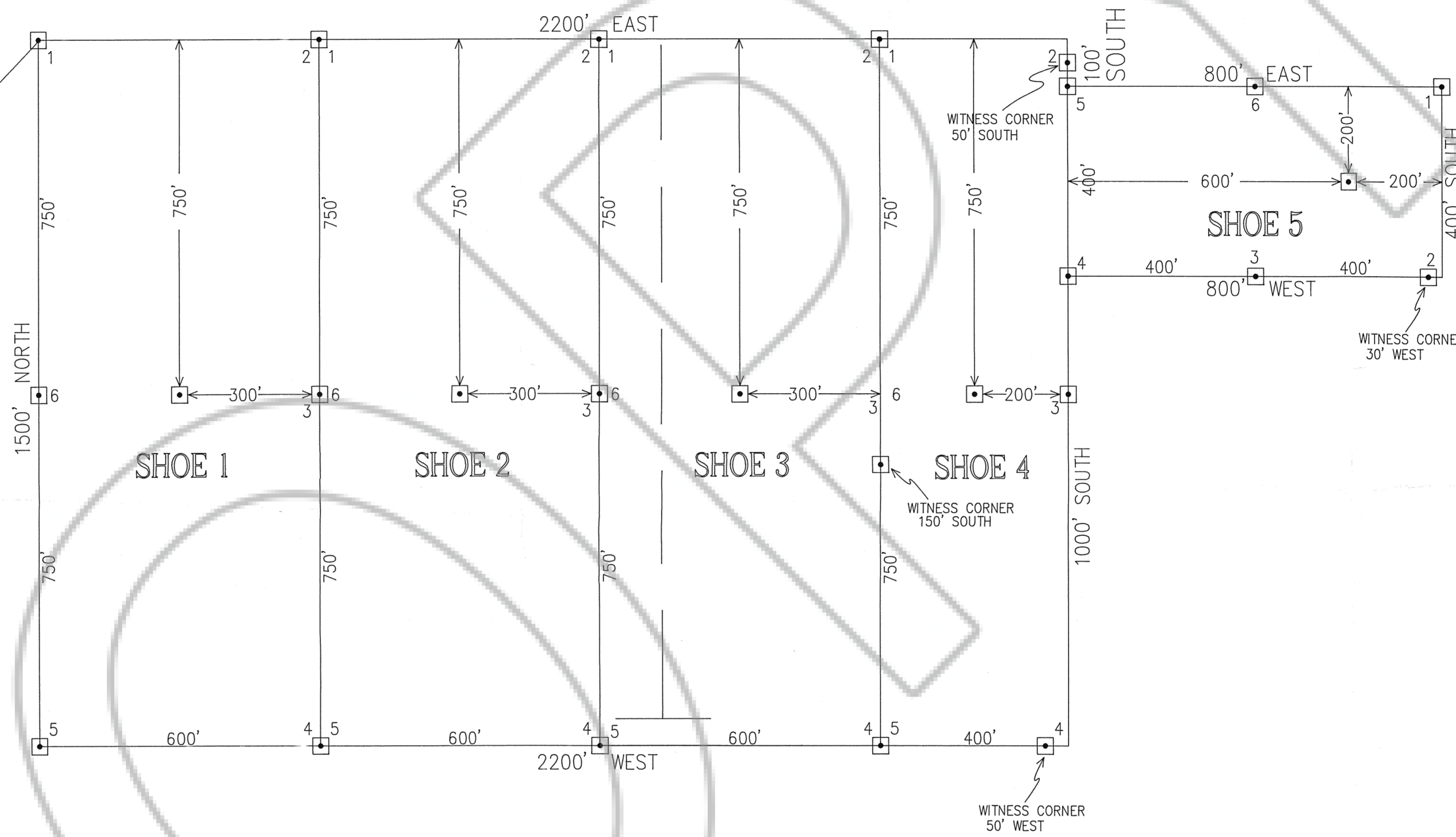
T.34 N., R.51 E.



T.33 N., R.51 E.

TIE: NORTH 43°37'45" EAST
2003.03'

SW1/4 SE1/4



LEGEND

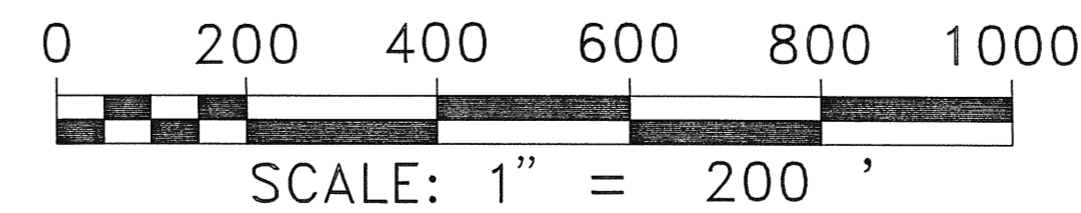
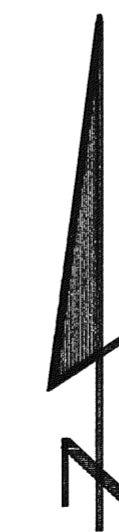
- FOUND G.L.O. BRASS CAP
- LOCATION MONUMENT
4" X 4" WOOD POST
- CORNER/SIDE CENTER MONUMENT
4" X 4" WOOD POST

LOCATION DATE:

SHOE 1 - 5 October 27, 1992

LOCATOR

NEWMONT GOLD COMPANY
P.O. BOX 669
CARLIN, NEVADA 89822



FILED AT THE REQUEST OF *Newmont Explorations*
 OF *Dec 14* 19 *93* at *13* M.
 RECORDS OF EUREKA COUNTY, NEVADA M. M. REHLEATI, Recorder
 File No. *143787* Fee \$ *75*

NEWMONT GOLD COMPANY
 P.O. BOX 669, CARLIN, NEVADA
 (702) 778-4710 Fax (702) 778-4371

LODE MINING CLAIMS
 SHOE 1-5
 T.34N., R.51E., SECTION 34
 EUREKA COUNTY, NEVADA