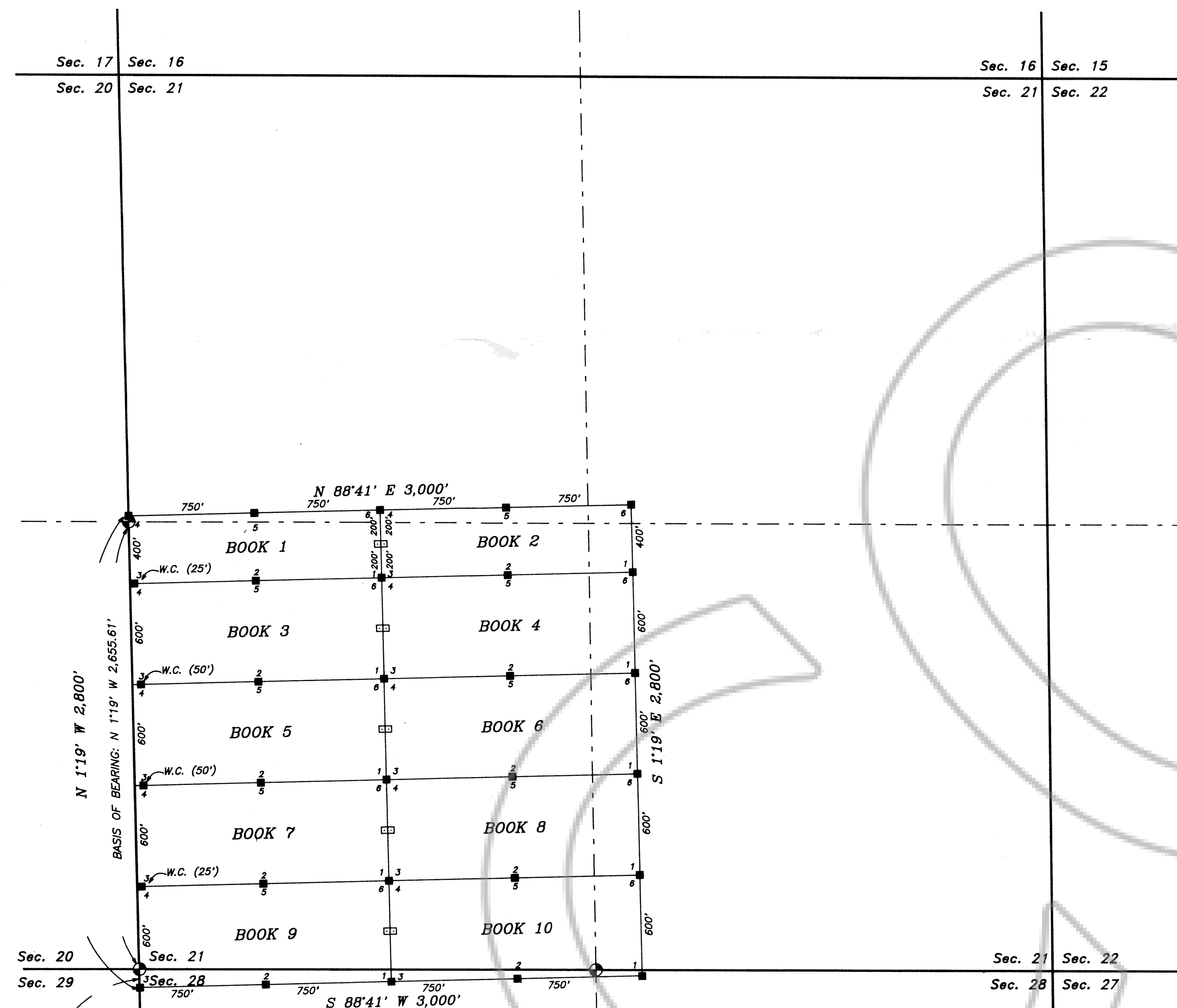


T. 36 N., R. 50 E., MDM



Tie: The SW Corner (No. 3) of BOOK 9 lies S 1°19' E 110' from the SW Corner of Section 21, a Cadastral Aluminum Cap

NOTES:

- 1) All claims are 600' x 1500' with 300' on each side of the location monument and center line of the claim unless otherwise noted.
- 2) The location monuments are set on the centerline of each claim, 10' from the near endline and 1490' from the opposite endline.
- 3) Location Dates:
BOOK 1 - 10 October 29, 1992
- 4) The section lines shown on this map were drawn from the Cadastral survey plat for T. 36 N., R. 50 E. MDM, dated April 3, 1987, and on the position of monuments as actually found on the ground, where indicated.
- 5) Basis of Bearing is the west line of the SW1/4 of Section 21, T. 36 N., R. 50 E., reported to be N 1° 19' W on the 1987 Cadastral diagram.

Legend:

- Found Aluminum Cap, 1986 Cadastral survey
- Set 4" X 4" wooden post with Notice for Location Monument
- Set 4" X 4" wooden post with tag for corner or side center monument
- W.C. Set witness corner monument on line at indicated distance N88°41'E from location of true point

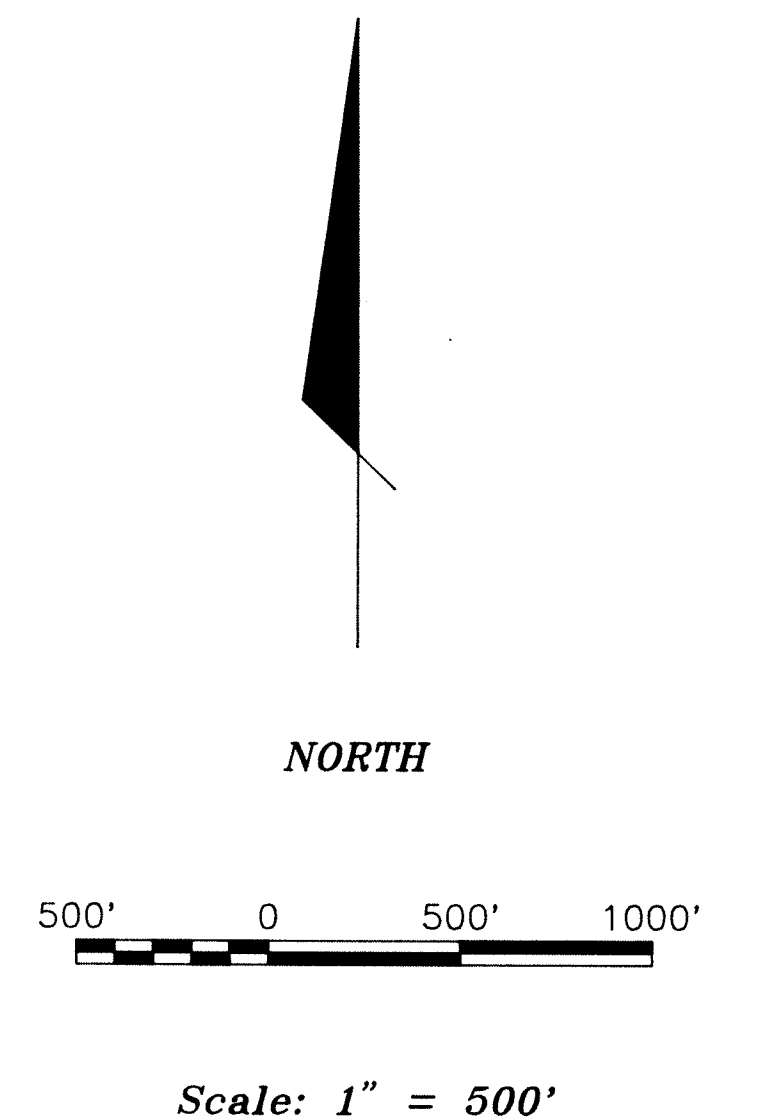
SURVEYOR'S CERTIFICATE

This map correctly represents a survey made by me or under my supervision between October 29, 1992 and November 22, 1992 at the request of Newmont Exploration Limited

William Francis Price

William Francis Price
Nevada PLS No. 6205

12/14/92



Jan 21 93
Newmont Exploration
44 3p
143972

MAP OF
BOOK 1 - 10 LODE MINING CLAIMS
Section 21, T. 36 N., R. 50 E.,
MDM
EUREKA COUNTY, NEVADA
LOCATED BY:
NEWMONT EXPLORATION LIMITED
P. O. BOX 669
CARLIN, NV 89822-0669

Sheet 1 of 1

143972