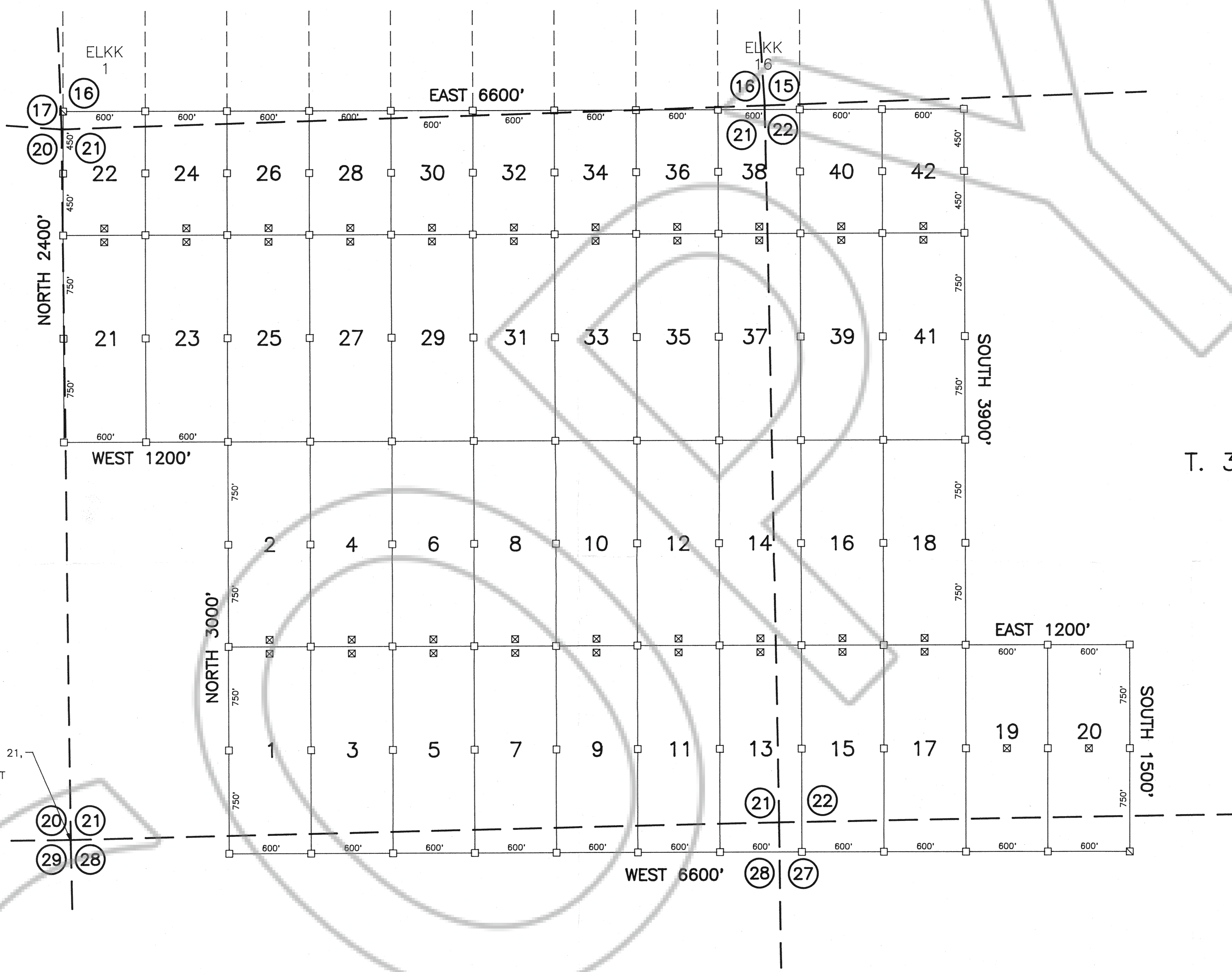
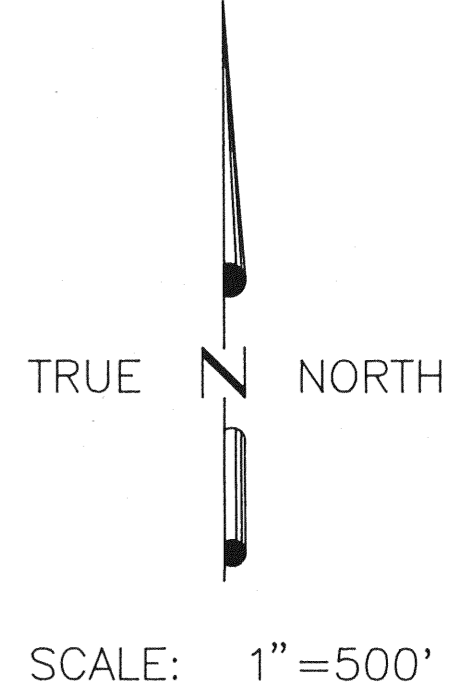


R. 51 E.



T. 36 N.



TIE: SOUTHWEST CORNER OF SECTION 21,
T. 36 N., R. 51 E., M.D.P.M.,
NORTH 52.80° TO THE NORTHWEST
CORNER OF CLAIM 22.

FILED BY THE REQUEST OF *Newmont Exploration*
ON *Jan 25 93* AT *41* MINS. EAST *2 p.m*
RECORDS OF EUREKA & ELKO COUNTIES, NEVADA. B.N. REBALANCE RECORDS
FILE NO. *144021* SEE S. *46502*

LEGEND

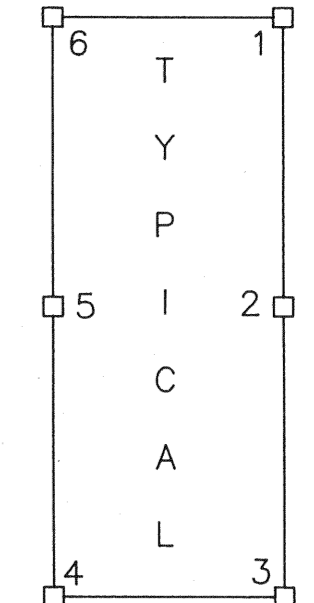
- ☒ 3 1/2" x 3 1/2" x 4' WOOD POST LOCATION MONUMENT
- 3 1/2" x 3 1/2" x 4' WOOD POST MONUMENT
- ⊗ INDICATES SECTION CORNER

LOCATION DATES

OCTOBER 29, 1992 1-20
OCTOBER 31, 1992 21-42

NOTES

- 1.) ALL CLAIMS ARE 600' X 1500' UNLESS OTHERWISE SHOWN
- 2.) LOCATION MONUMENTS ARE 10' FROM END LINE OF CLAIM UNLESS OTHERWISE SHOWN.



MAP OF THE
DUCK LODGE MINING CLAIMS
Eureka & Elko Counties, Nevada

T. 36 N., R. 51 E.
Located by Robert W. Schlichting
AGENT FOR
NEWMONT EXPLORATION LIMITED
P.O. Box 669
Carlin, Nevada 89822
October 27, 1992