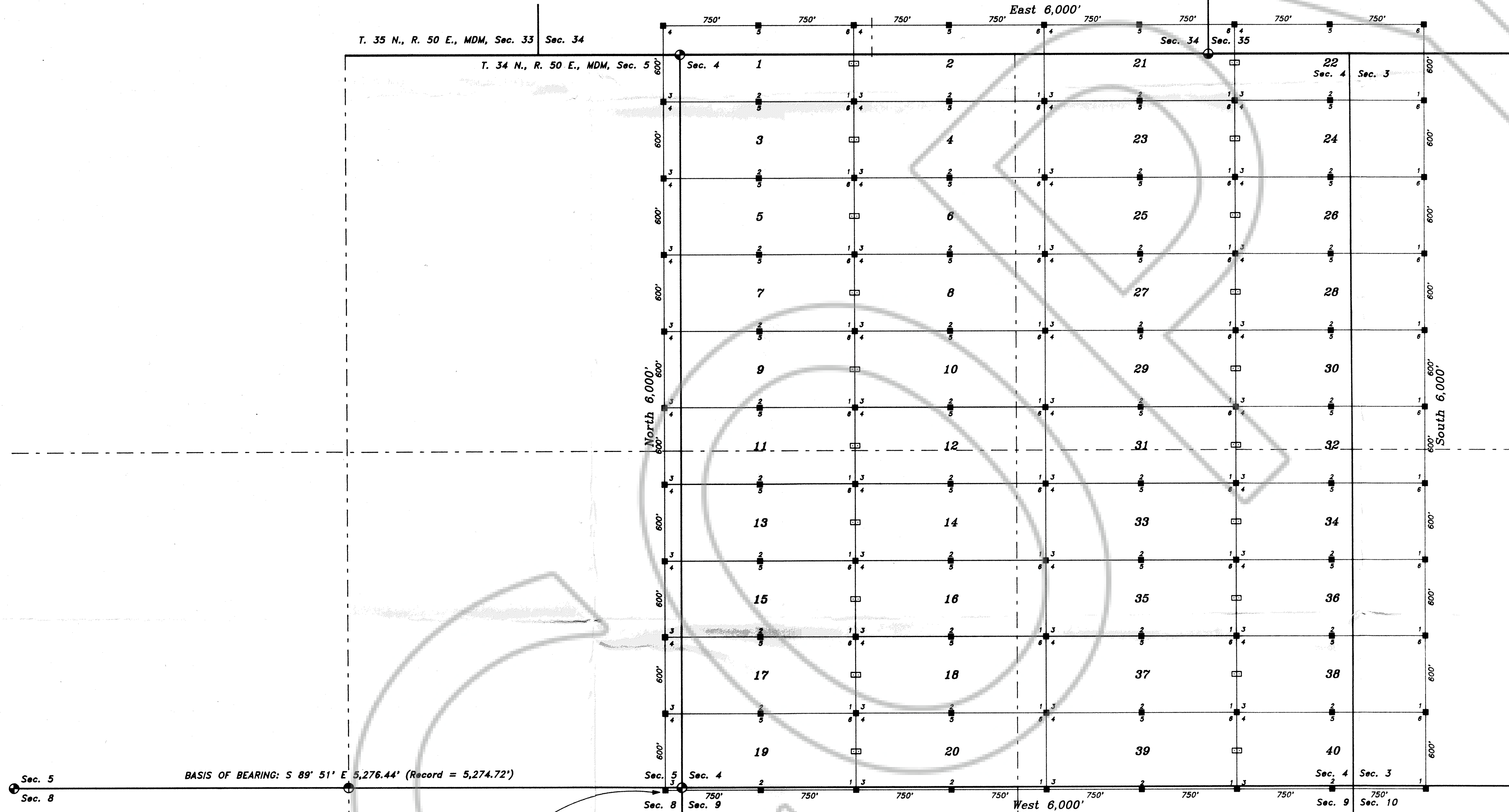


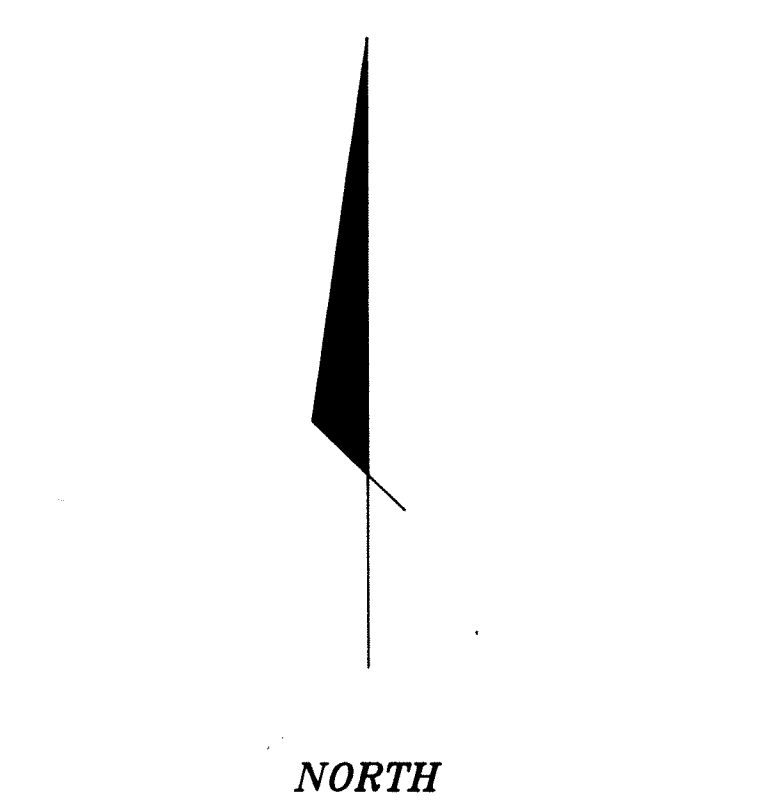
NOTES:

- 1) All claims are 600' x 1500' with 300' on each side of the location monument and center line of the claim.
- 2) The location monuments are set on the centerline of each claim, 10' from the near endline and 1490' from the opposite endline.
- 3) Location Dates:
SHZU 1-40 November 5, 1992
- 4) The section lines shown on this map were drawn from the survey plat for T. 34 N., R. 50 E. MDM, dated October 18th, 1921, and on the position of monuments as actually found on the ground, where indicated.
- 5) Basis of Bearing is the south line of Section 5 T. 34 N., R. 50 E., MDM, reported to be S 89° 51' E on the 1921 GLO diagram.



Legend:

- or ○ Found Brass Cap, 1914 GLO survey
- Set 4" X 4" wooden post with Notice for Location Monument
- Set 4" X 4" wooden post with tag for corner or side center monument



Tie: The SW Corner (No. 3) of SHZU 19 lies South 20' and West 130' from the SW Corner of Section 4, T.34N., R.50E., a GLO Brass Cap

SURVEYOR'S CERTIFICATE

This map correctly represents a survey made by me or under my supervision between November 5, 1992 and November 20, 1992 at the request of Newmont Exploration Limited

William Francis Price

William Francis Price
Nevada PLS No. 6205

12/4/92

FILED AT THE REQUEST OF *Newmont Exploration*
on *Feb 2* 19 *93* at *12* mins, past *4 p* M.
RECORDS OF EUREKA COUNTY, NEVADA M. N. REBALEATI, Recorder
Fee No. *144331* Fee \$ *600.00*

MAP OF
SHZU 1 - 40 LODE MINING CLAIMS
T. 34 & 35 N., R. 50 E.,
MDM
EUREKA COUNTY, NEVADA
LOCATED BY:
NEWMONT EXPLORATION LIMITED
P. O. BOX 669
CARLIN, NV 89822-0669