

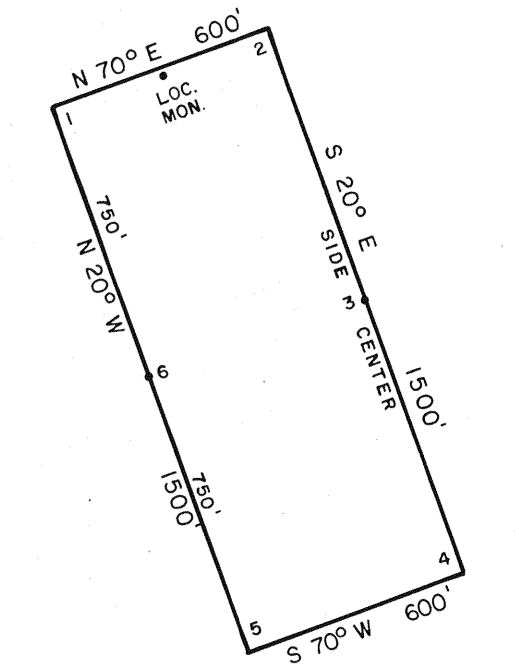
23

24

R 53 E R 54 E

T 17 N

TYPICAL CLAIM & CORNER NUMBERS



ALL CLAIMS ARE 1500' x 600'.
 ALL CLAIM CORNERS, SIDE CENTERS & LOCATION MONUMENTS ARE 4" x 4" x 4" WOOD POSTS.
 ALL LOCATION MONUMENTS ARE 10' IN FROM THE END CENTER.
 ● DENOTES A FOUND SECTION CORNER.
 SECTION LINES ARE PROJECTED.

LOCATION DATES

JANUARY 2, 1993 - - - - - 29-32
 JANUARY 3, 1993 - - - - - 1-28, 43-51, 62-70
 JANUARY 4, 1993 - - - - - 33-42, 52-61, 71-99

144512

FCV LODE MINING CLAIMS
NO'S 1-99
SECS. 23-27 & 34-36, T 17 N, R 53 E, M.D.B.&M.
EUREKA COUNTY, NEVADA
OWNER:
DAVE ROWE
HCR 1208
WINNEMUCCA, NEVADA 89445

FILED AT THE REQUEST OF David Rowe
 on Feb 5 1993, at 26 mins, past 9A M.
 RECORDS OF EUREKA COUNTY, NEVADA M.N. REBEA, Recorder
 File No. 144512 Fee \$ 4,850.00

