

R 53 E

LOCATOR:

CONTRACT GEOLOGICAL SERVICES, Inc.
1395 Greg St., Suite 108
Sparks, NV 89431

LOCATION:

Sections 10, 11, 13-15, 21-28, 35, 36 T20N, R53E
Sections 30, 31 T20N, R54E
Sections 1, 2, 11-14 T19N, R53E
Section 6 T19N, R54E
Mount Diablo Base Line and Meridian
White Pine County, Nevada

TIE POINT:

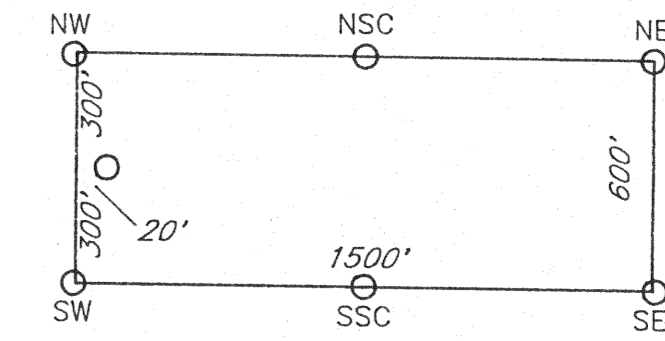
The NE corner of PLS 137 is 0' South and
1350' West of the NW corner of Section 11,
T19N, R53E, Eureka County, Nevada.

All posts are 4"x4" long wooden posts.
All claims are 1500' x 600' with location monuments
located 20' in from end lines, except where noted.

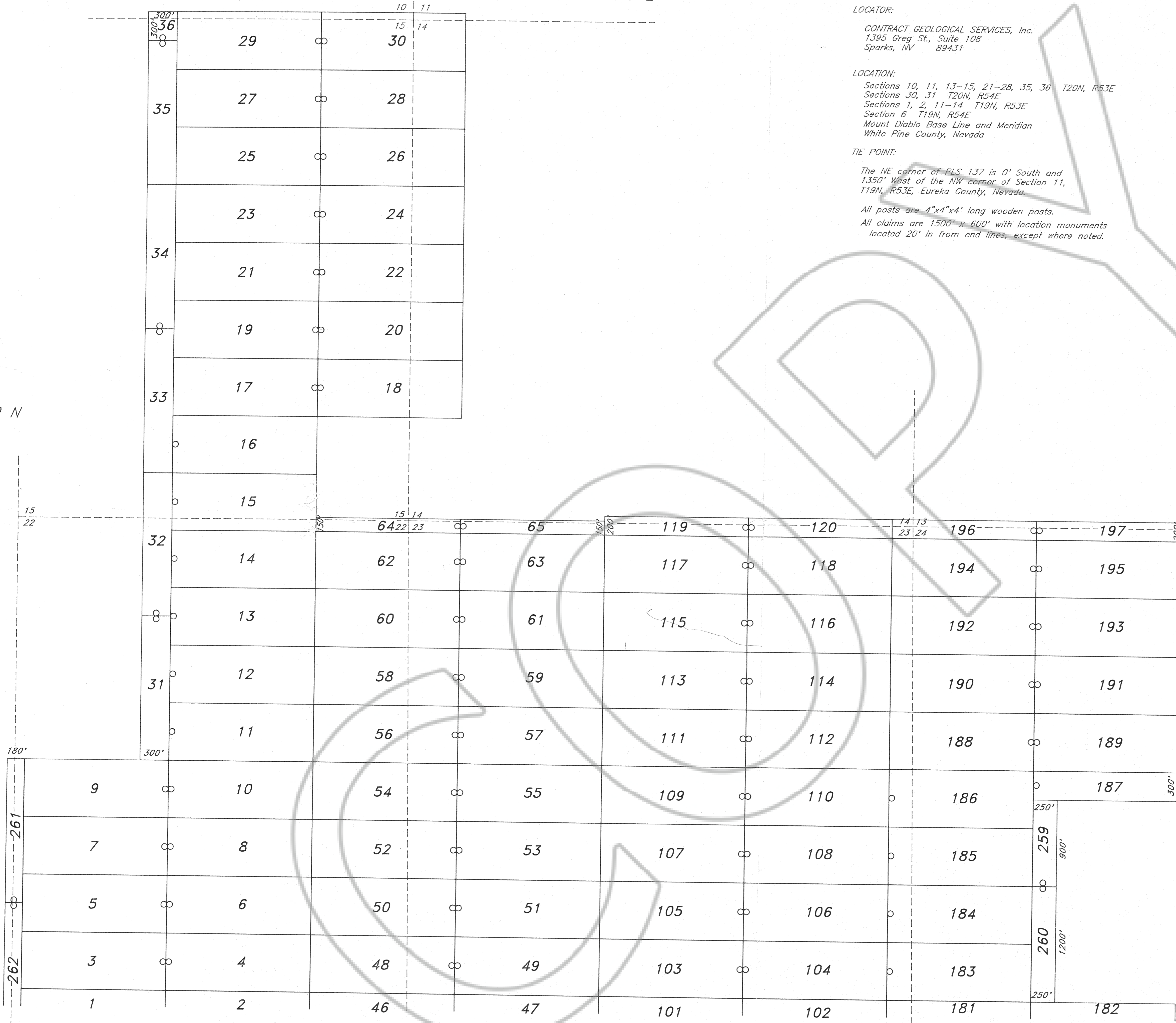
LOCATION DATES:

1/22/93
1/23/93
1/24/93
1/25/93
1/26/93
1/27/93
1/31/93
2/4/93
PLS 121-146
PLS 37-43, 66-86, 236-246, 255, 256
PLS 1-14, 31, 32, 44-65, 247-254, 257, 258
PLS 15-30, 33, 34, 87-120
PLS 147-180, 182, 198-235
PLS 181, 183-197
PLS 35, 36
PLS 259-264

TYPICAL CLAIM:



T 20 N

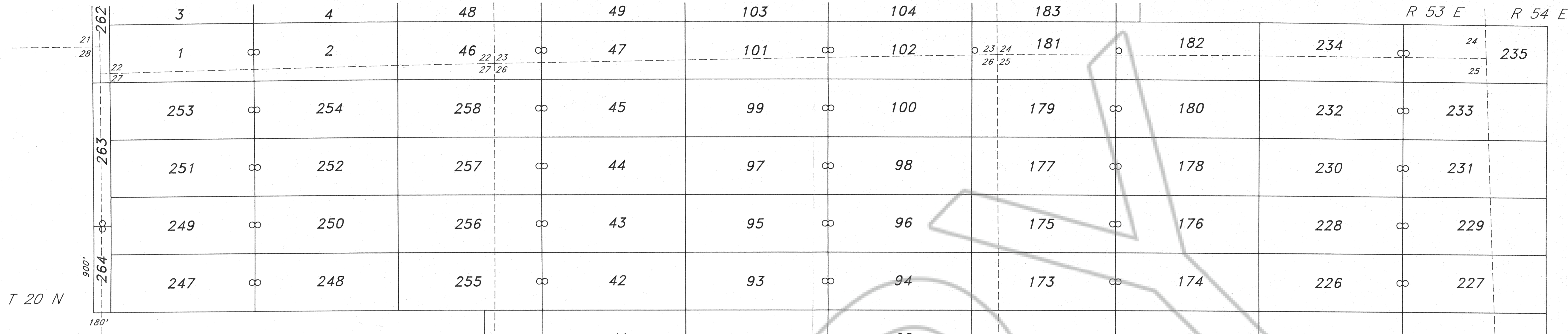


Sheet 3 of 3
at top also R 53 E.
should be 53 E.
Wrote letter on
6-8-95 to
C.G.S., Inc.
1395 Greg St.
Sparks NV 89431

FILED AT THE REQUEST OF C.G.S., Inc.
on 11 Mar 1 1993 at 30 mins, post 9 A. M.
RECORDS OF EUREKA COUNTY, NEVADA M. N. REBELEATI, Recorder
File No. 144844 Fee \$ 335.00

Magnetic Declination 15.0° E

PLS 1-264 LODE MINING CLAIMS		
Scale: 1"=500'	Located: 1/22/93-2/4/93	Drawn By: GH
Feb. 8, 1993	Completed: 2/4/93	Revised:
By: CONTRACT GEOLOGICAL SERVICES, INC.		
1395 Greg St., Suite 108, Sparks, Nevada 89431		Map 1 of 3



LOCATOR:

CONTRACT GEOLOGICAL SERVICES, Inc.
1395 Greg St., Suite 108
Sparks, NV 89431

LOCATION:

Sections 10, 11, 13-15, 21-28, 35, 36 T20N, R53E
Sections 30, 31 T20N, R54E
Sections 1, 2, 11-14 T19N, R53E
Section 6 T19N, R54E
Mount Diablo Base Line and Meridian
White Pine County, Nevada

TIE POINT:

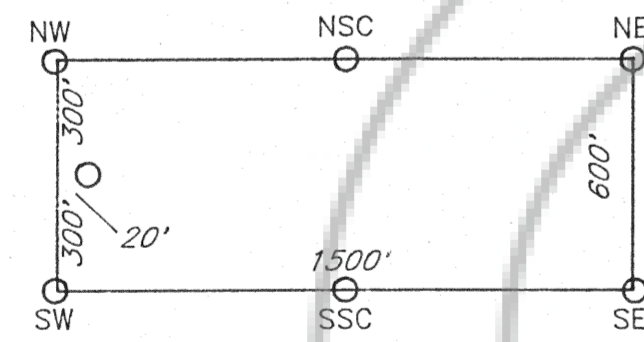
The NE corner of PLS 137 is 0' South and
1350' West of the NW corner of Section 11,
T19N, R53E, Eureka County, Nevada.

All posts are 4"x4" long wooden posts.
All claims are 1500' x 600' with location monuments
located 20' in from end lines, except where noted.

LOCATION DATES:

- 1/22/93 PLS 121-146
- 1/23/93 PLS 37-43, 66-86, 236-246, 255, 256
- 1/24/93 PLS 1-14, 31, 32, 44-65, 247-254, 257, 258
- 1/25/93 PLS 15-30, 33, 34, 87-120
- 1/26/93 PLS 147-180, 182, 198-235
- 1/27/93 PLS 181, 183-197
- 1/31/93 PLS 35, 36
- 2/4/93 PLS 259-264

TYPICAL CLAIM:



FILED AT THE REQUEST OF CGS, Inc.
on Mar. 1 19 93, at 30 mins. past 9 A. M.
RECORDS & CLERK, WHITE PINE COUNTY, NEVADA M. N. REBELETTI, Recorder
File No. 144844 Fee \$ 2160.00

Magnetic Declination 15.0° E

PLS 1-264 LODE MINING CLAIMS		
Scale: 1"=500'	Located: 1/22/93-2/4/93	Drawn By: GH
Feb. 8, 1993	Completed: 2/4/93	Revised:
By: CONTRACT GEOLOGICAL SERVICES, INC.		
1395 Greg St., Suite 108, Sparks, Nevada 89431		Map 2 of 3

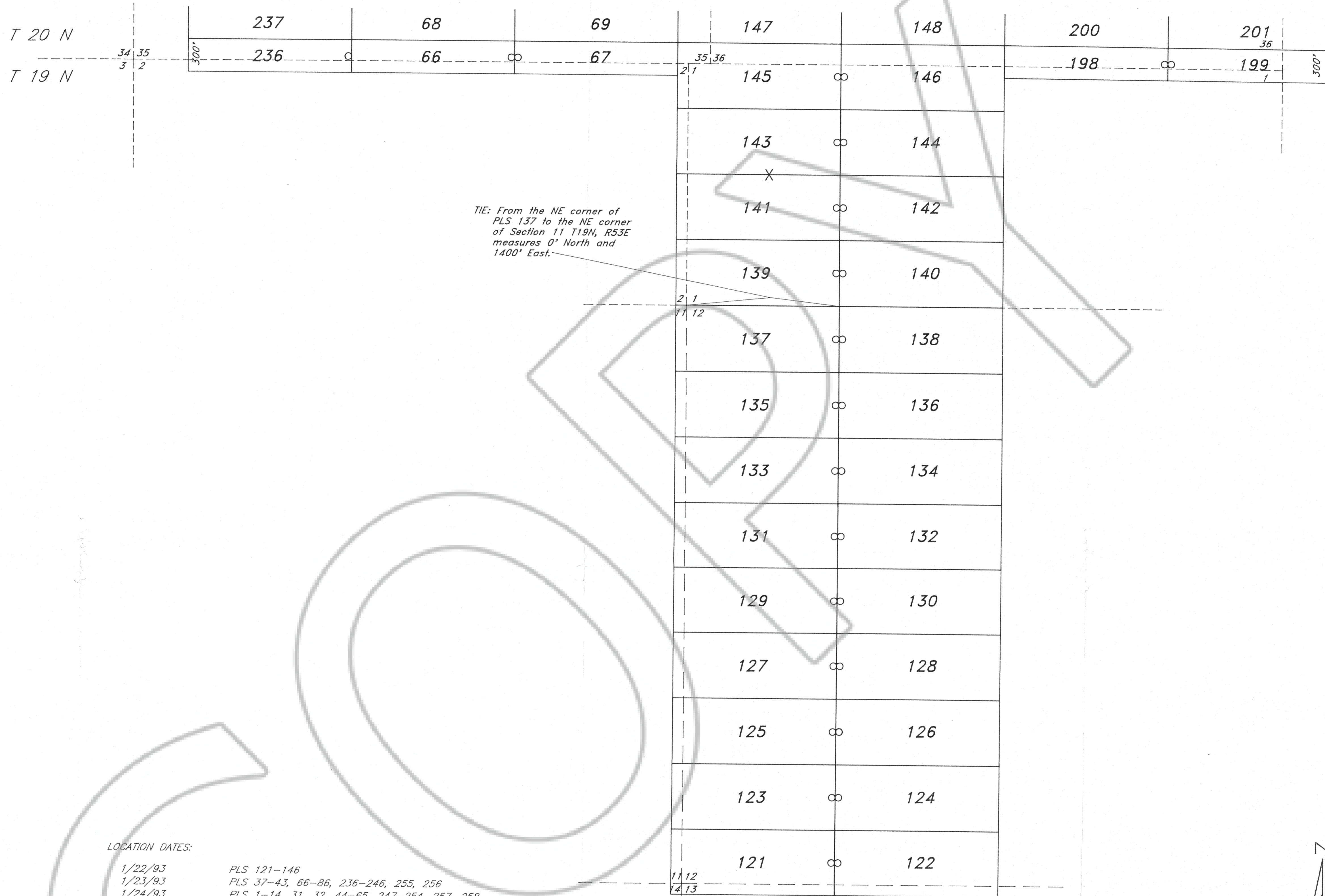
144844

34 35
3 2

35 36
2 1

36
1

R 58 E



TIE: From the NE corner of PLS 137 to the NE corner of Section 11 T19N, R53E measures 0' North and 1400' East.

LOCATOR:

CONTRACT GEOLOGICAL SERVICES, Inc.
1395 Greg St., Suite 108
Sparks, NV 89431

LOCATION:

Sections 10, 11, 13-15, 21-28, 35, 36 T20N, R53E
Sections 30, 31 T20N, R54E
Sections 1, 2, 11-14 T19N, R53E
Section 6 T19N, R54E
Mount Diablo Base Line and Meridian
White Pine County, Nevada

TIE POINT:

The NE corner of PLS 137 is 0' South and 1350' West of the NW corner of Section 11, T19N, R53E, Eureka County, Nevada.

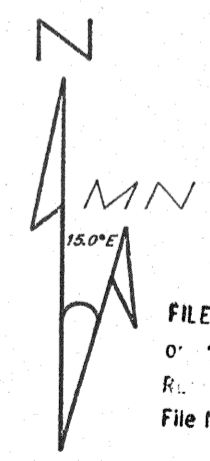
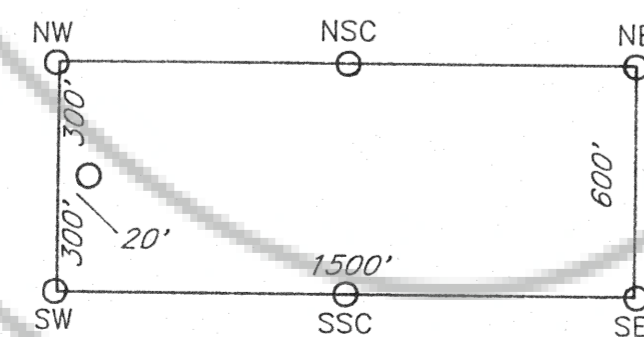
All posts are 4"x4" long wooden posts.

All claims are 1500' x 600' with location monuments located 20' in from end lines, except where noted.

LOCATION DATES:

1/22/93	PLS 121-146
1/23/93	PLS 37-43, 66-86, 236-246, 255, 256
1/24/93	PLS 1-14, 31, 32, 44-65, 247-254, 257, 258
1/25/93	PLS 15-30, 33, 34, 87-120
1/26/93	PLS 147-180, 182, 198-235
1/27/93	PLS 181, 183-197
1/31/93	PLS 35, 36
2/4/93	PLS 259-264

TYPICAL CLAIM:



FILED AT THE REQUEST OF CGS
or M. N. 1 19 93, at 20 mins, post. 22-M.
R. 144844 COUNTY, NEVADA M. N. REBALEATI, Recorder
File No. 144844 Fee \$ 165.00

Magnetic Declination 15.0° E

PLS 1-264 LODGE MINING CLAIMS		
Scale: 1"=500'	Located: 1/22/93-2/4/93	Drawn By: GH
Feb. 8, 1993	Completed: 2/4/93	Revised:
By: CONTRACT GEOLOGICAL SERVICES, INC.		
1395 Greg St., Suite 108, Sparks, Nevada 89431		Map 3 of 3