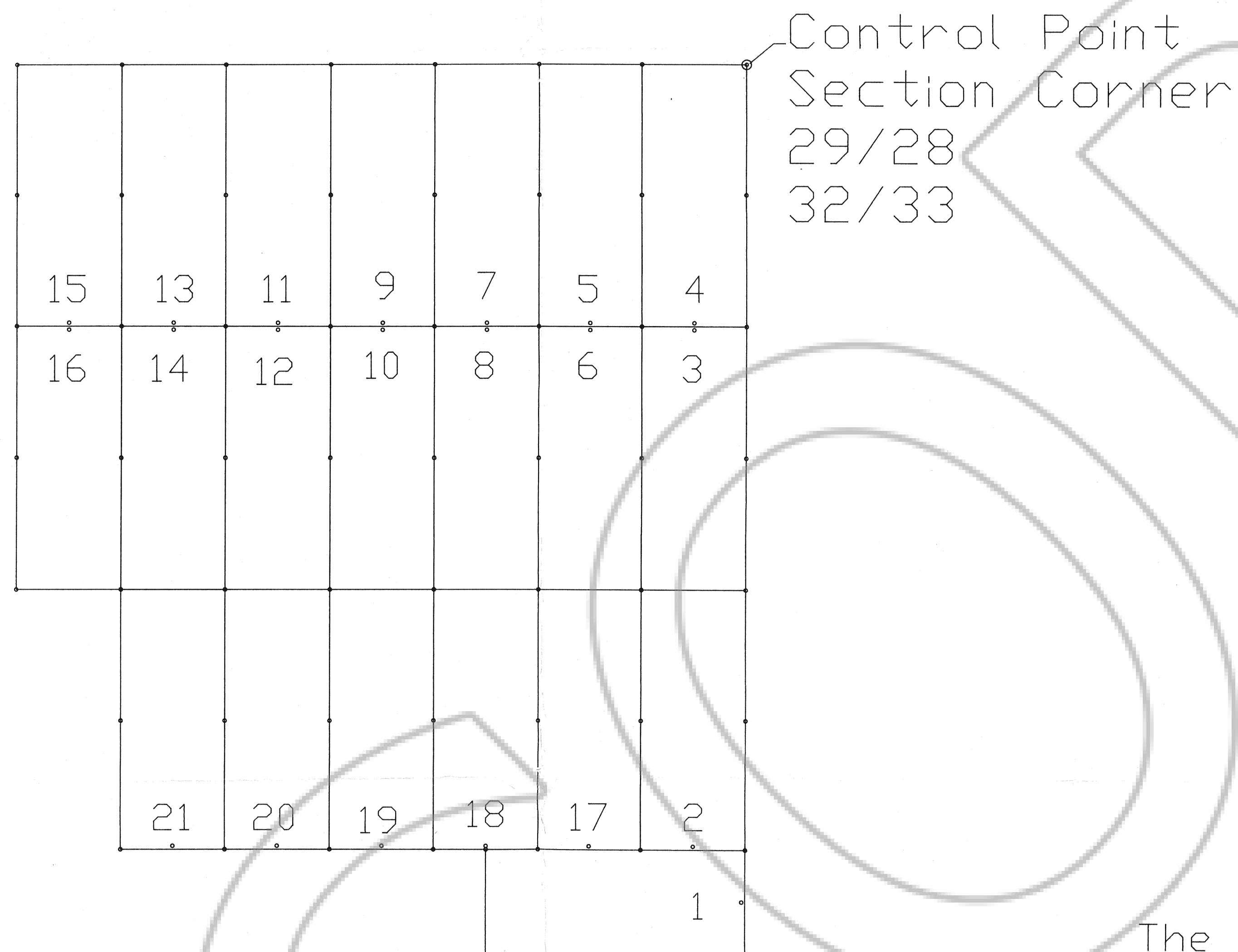
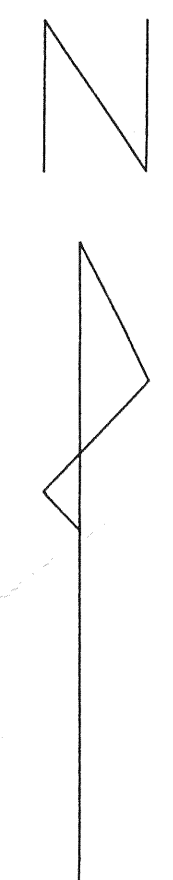
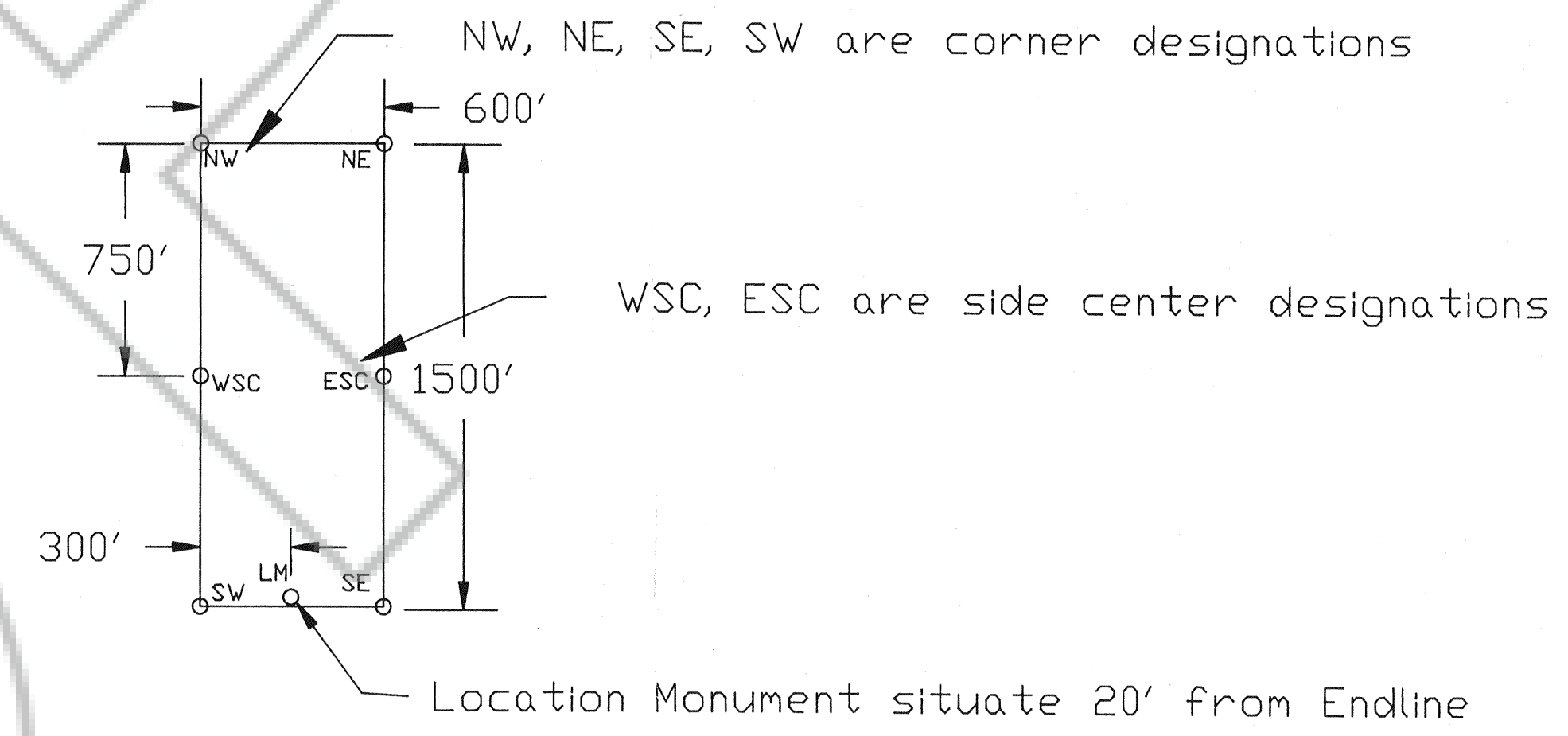


CLAIM MAP FOR THE BOULDER CLAIM GROUP

in T35N, R50E, section 32, Eureka County, Nevada



Typical Claim:



SCALE 1" = 500'

The Boulder claims 1 through 21 were located on the 12th day of February, 1993 for Franco-Nevada Mining Corp., Inc., and Euro-Nevada Mining Corp., Inc., with address at 6121 Lakeside Drive, Reno, Nevada 89511.

All monuments are in place as 4"x4"x4' wood posts marked with enscribed metal tags.

The claims were originally located as the IJ 1-21 and were amended to be the Boulder 1-21. Agent: K.D. Snyder

FILED AT THE REQUEST OF K.D. Snyder
 on April 6, 1993, at 5:3 mins, past 9 AM.
 RECORDING OFFICE, EUREKA COUNTY, NEVADA M. N. REBALEATI, Recorder
 File No. 145063 Fee \$ 315.00