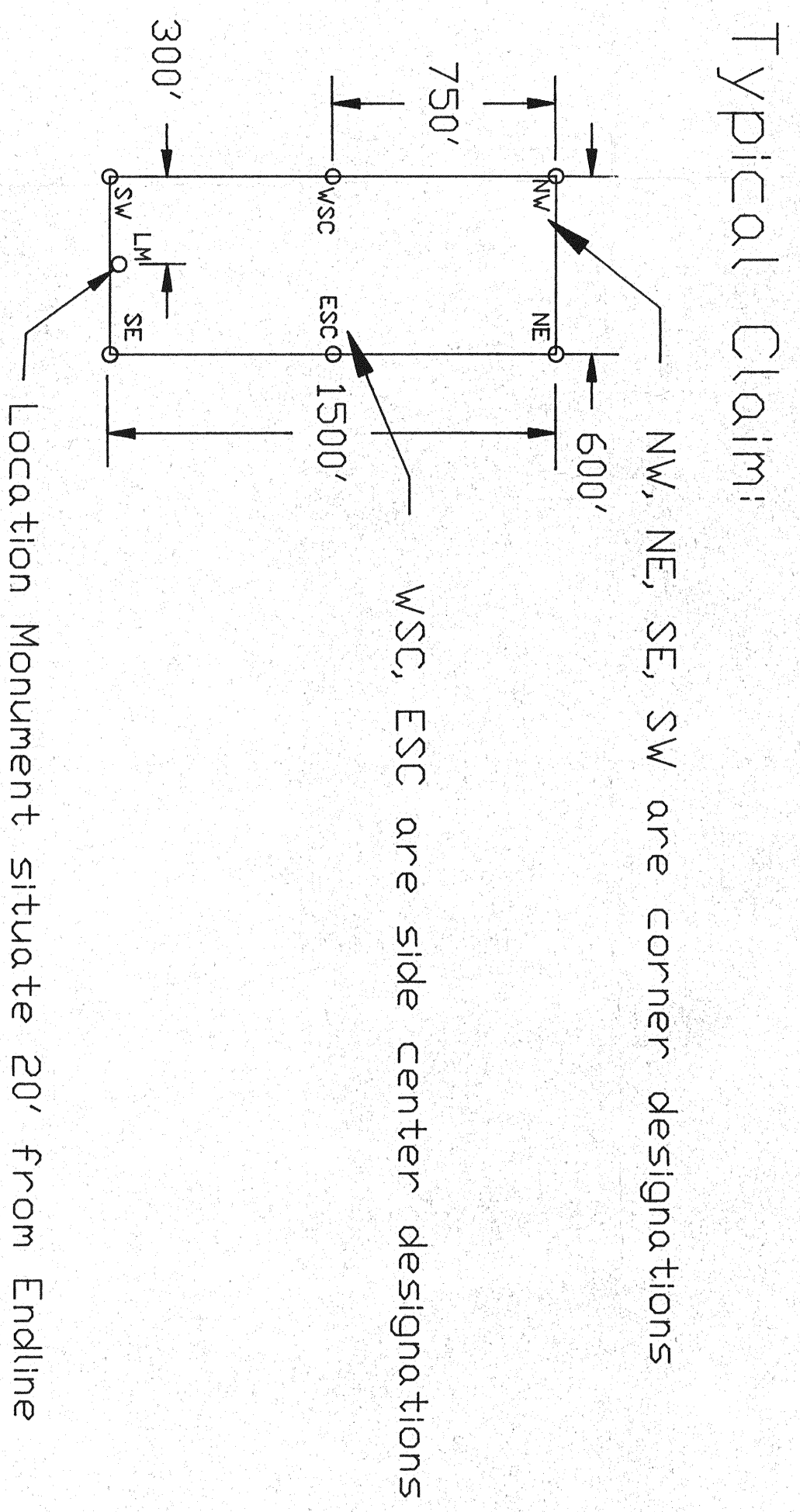


# CLAIM MAP FOR THE GIANT LODGE CLAIMS

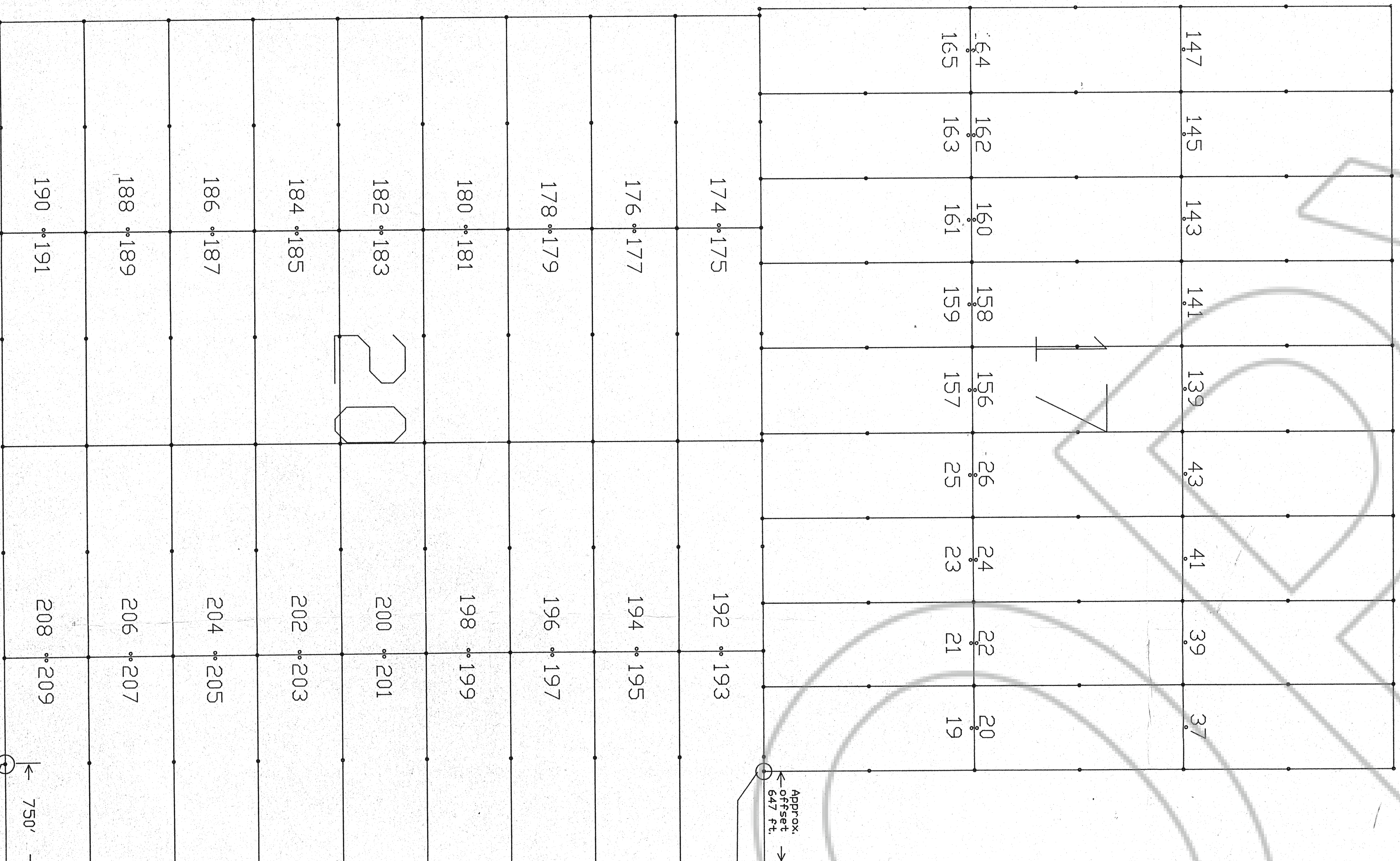
located in T36N, R49E Eureka County, Nevada  
Owners: Franco-Nevada Mining Corp., Inc, and  
Euro-Nevada Mining Corp., Inc.,  
6121 Lakeside Drive, Reno, Nevada 89511

N

SCALE 1" = 500'



Claims in section 17 were located on the 11th of February, 1993 as the "ANT" claims and amended as the GIANT claims. All monuments are in place and are 4"x4"x4' wood posts.



Approximate NE corner of section 20 and SE corner of section 17 but marker was not found.

The GIANT claims in section 20 were located as the ANT claims and were amended as the GIANT lode claims. Giant 174-197 were located on the 11th of February, 1993; the GIANT 198-209 were located on the 10th of February, 1993. All monuments are in place and are 4"x4"x4' wood posts.

MADE AT THE REQUEST OF H. D. Snyder  
BY H. D. Snyder, a Licensed Professional Surveyor  
RECORDING OFFICE, EUREKA COUNTY, NEVADA  
FILE NO. 145127 FILED 1993  
FEE \$ 55.00

Control Point:  
Section corner 20-21/29-28