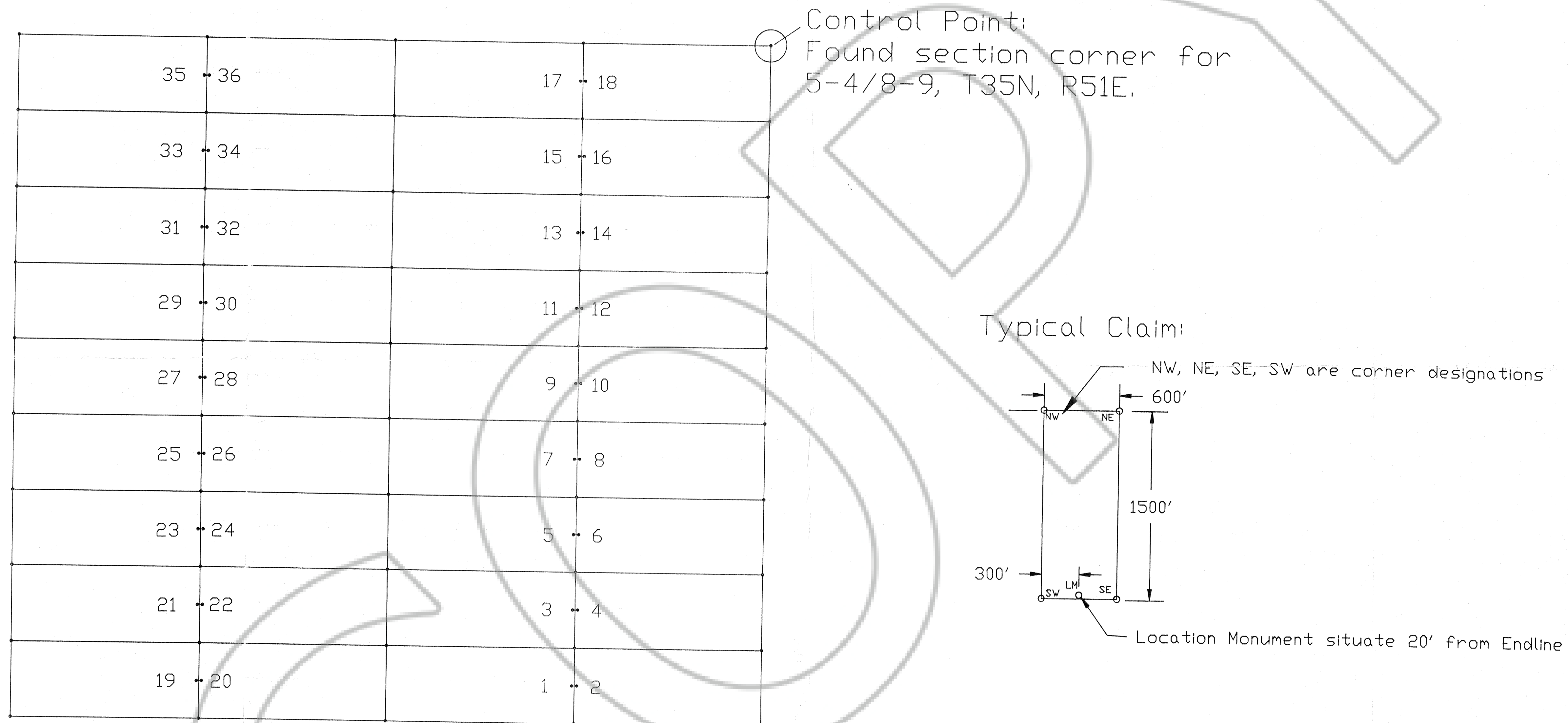


MAP OF THE PARIS GROUP OF LODE CLAIMS

Owned by: Franco-Nevada Mining Corp., Inc., and
Euro-Nevada Mining Corp., Inc., 6121 Lakeside
Drive, Reno, Nevada 89511.



Section 8 of T35N, R51E, Eureka County, Nevada

Note: all corners and location monuments are 4"x4"x4' wood posts; all are in-place; all have positions described by etched metal tag. The Paris claims were originally located as the WELS claims; amended to the Paris 1-36 claims. All locations were placed on the 13th day of February, 1993. Agent: K.D.Snyder

FILED AT THE REQUEST OF *Franco-Nevada Mining*
on *Apr. 15* 19 *93*, at *11* mins. past *3* P.M.
RECORDS OF EUREKA COUNTY, NEVADA M. N. REBALEATI, Recorder
File No. **145206** Fee \$ *25.00*

Scale 1" = 500'